

# Mercedes-Benz Museum - Information



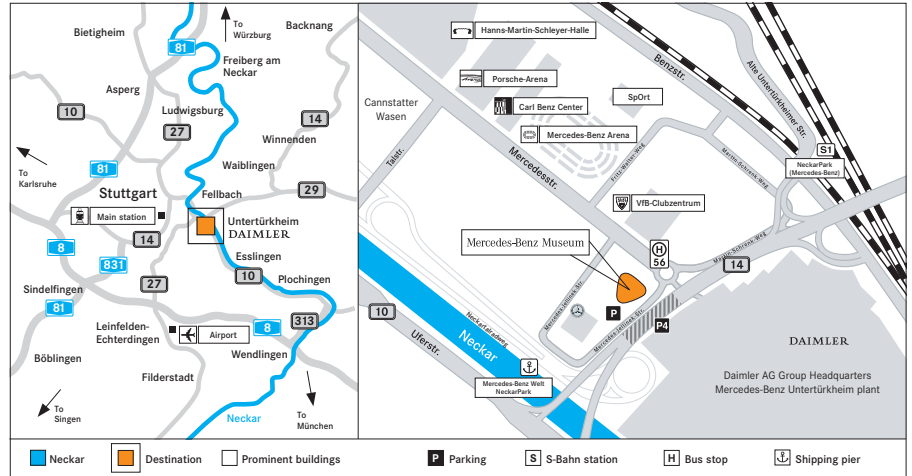
1. How to find us
2. Opening hours and contact
3. Prices
4. Guided tours and factory tour
5. Information for groups

Subject to change. Latest version 01 / 2015.



**Mercedes-Benz**  
Das Beste oder nichts.

# 1. Mercedes-Benz Museum – how to find us



## Traffic guidance system

Please follow the “NeckarPark/Mercedes-Benz” traffic guidance system. The Mercedes-Benz Museum is only a stone’s throw away from the Mercedes-Benz Arena.

## Arrival by car

**From Karlsruhe:** Take the A8 motorway to the Stuttgart intersection, take the Vaihingen exit. Merge onto the A831 motorway, then the B14 road towards Stuttgart-Zentrum (centre of Stuttgart) and merge onto the B10/B14. Follow the “Mercedes-Benz” signs to the Mercedes-Benz Museum exit.

**From Ulm:** Take the A8 motorway to the Esslingen-Zentrum (centre of Esslingen) exit. From there take the B313 road, then the B10 road towards Stuttgart. Follow the “Mercedes-Benz” signs to the Mercedes-Benz Museum exit.

**From Heilbronn:** Take the A81 motorway to the Zuffenhausen exit, then merge onto the B10 road towards Stuttgart-Zentrum (centre of Stuttgart) and follow the “NeckarPark” signs towards Stuttgart-Bad Cannstatt/Esslingen and then the “Mercedes-Benz” signs to the Mercedes-Benz Museum exit.

## Classic cars

We extend a particular welcome to visitors arriving by classic car. We would like to invite you to park your classic car directly in front of the main entrance of the Museum. Please register at the Mercedes-Benz Classic Contact Center before your visit.

## Parking

Parking facilities are provided in the Museum’s car park or in the P4 multi-storey car park. Parking fees: 1 euro per hour for the first, second and third hour; 2 euros per hour from the fourth hour. Family and disabled parking bays are provided for our disabled visitors in the Museum car park (not P4). These can be found on level EG close to the ticket machines and glass doors. Vehicles for disabled persons beyond a height of 2 m are permitted to park directly in front of the main entrance of the Museum.

Please be aware of the ecological area around Stuttgart which requires so-called environmental tags.

## Electric charging station

In the Museum multi-storey car park, there are six Type 2 electric charging stations available for you.

## Events

During VfB Stuttgart’s football home matches and other major events access to the Mercedes-Benz Museum may be restricted. In such circumstances we recommend using the S-Bahn.

## Arrival by train

From Stuttgart main station take the S-Bahn (rapid transit system) of line S1 in the direction of Kirchheim (Teck) to “NeckarPark” (Mercedes-Benz). On leaving the train, follow signs to the Museum.

## Arrival by bus

Bad Cannstatt station is served by S-Bahn lines S1, S2 and S3 as well as by the regional rail network (RegionalBahn) and Regional-Express. Bus line 56 connects Bad Cannstatt station with “Mercedes-Benz Welt”.

## Arrival by bicycle

The Neckar valley cycle route passes right by the Museum. Leave the route at the shipping pier, “Mercedes-Benz Welt/NeckarPark” and follow the signs for “Mercedes-Benz Museum/NeckarPark”. Further information (only in German) at [www.neckarradweg.de](http://www.neckarradweg.de)

## Arrival by boat

Boats stop regularly at the landing “Mercedes-Benz Welt/NeckarPark” (only during summer). Further information at [www.neckar-kaeptn.de](http://www.neckar-kaeptn.de)



**Mercedes-Benz**  
The best or nothing.

## 2. Mercedes-Benz Museum – opening hours and contact

### Opening hours

Tuesday to Sunday from 9 a.m. to 6 p.m. – ticket desk closes at 5 p.m.  
Closed on Mondays.

### Restaurant

Tuesday to Sunday from 10 a.m. to 7 p.m.  
Closed on Mondays.  
Further information on our food offers at [www.mercedes-benz-classic.com/restaurant](http://www.mercedes-benz-classic.com/restaurant)

### Cafébar

Tuesday to Sunday from 9 a.m. to 6 p.m.  
Closed on Mondays.

### Museum Shop

Tuesday to Sunday from 10 a.m. to 6 p.m.  
Closed on Mondays.

Shop and stroll at any time – even without visiting the Museum before. If you make a purchase at the Museum Shop or if you are a guest at the restaurant please show us your ticket for the car park and we will give you free parking for the first hour in the Museum's car park.

### Online shopping

You can shop online in comfort 24 hours a day at [www.mercedes-benz-classic.com/store](http://www.mercedes-benz-classic.com/store)

### Open

3 April 2015, Good Friday  
5 April 2015, Easter Sunday  
6 April 2015, Easter Monday  
1 May 2015, Labor Day  
14 May 2015, Ascension Day  
24 May 2015, Whit Sunday  
25 May 2015, Whit Monday  
4 June 2015, Feast of Corpus Christi  
3 October 2015, German Unification Day  
1 November 2015, All Saints' Day  
18 November 2015, Penance Day\*  
26 December 2015, 2. Christmas Day  
\*no bank holiday in Baden-Württemberg

### Closed

24 December 2015, Christmas Eve  
25 December 2015, 1. Christmas Day  
31 December 2015, New Year's Eve

### Please note

When visiting the exhibition, children under the age of 14 must be accompanied by an adult.

Dogs (except for guide dogs) are not allowed in the exhibition rooms, the entrance area or the restaurant.

### Barrier-free museum

There are special parking spaces available in the Museum's multi-storey car park (not P4) for families and visitors with restricted mobility. The Mercedes-Benz Museum combines its easy-access exhibition with unique architecture. Numerous lifts serve all floors. Wheelchairs, walking frames and pushchairs are available for use if required.

Further information at [www.mercedes-benz-classic.com/mobile](http://www.mercedes-benz-classic.com/mobile)

### Newsletter – the latest and more

Keen to discover more? The Mercedes-Benz Classic Newsletter provides regular updates on the latest news, events and offers at Mercedes-Benz Classic.

Further information at [www.mercedes-benz-classic.com/newsletter](http://www.mercedes-benz-classic.com/newsletter)

For questions and reservations, please contact the Mercedes-Benz Classic Contact Center. We will be happy to advise you personally on the lowest level of the building, the Passage.

### Contact and reservations

Mercedes-Benz Classic Contact Center  
Phone: +49(0)711-17 30 000  
Fax: +49(0)711-17 30 400  
E-mail: [classic@daimler.com](mailto:classic@daimler.com)

### Address

Mercedes-Benz Museum  
Mercedesstraße 100  
70372 Stuttgart, Germany

### Further information online at

@ [mercedes-benz-classic.com/museum](http://mercedes-benz-classic.com/museum)  
f [facebook.com/mercedesbenzmuseum](https://facebook.com/mercedesbenzmuseum)  
t [twitter.com/mb\\_museum](https://twitter.com/mb_museum)  
f [flickr.com/photos/mb\\_museum](https://flickr.com/photos/mb_museum)  
y [youtube.com/mercedesbenzmuseum](https://youtube.com/mercedesbenzmuseum)  
a [mercedes-benz-classic.com/app](https://mercedes-benz-classic.com/app)  
g [google.com/+mercedesbenzmuseum](https://google.com/+mercedesbenzmuseum)  
p [mercedes-benz-classic.com/pinterest](https://mercedes-benz-classic.com/pinterest)  
i Follow us on Instagram  
@mercedesbenzmuseum

Information on the Mercedes-Benz Museum while on the go on your smartphone



**Mercedes-Benz**  
The best or nothing.

### 3. Mercedes-Benz Museum – prices

Category	in euros	Visitors
Day ticket	8.00	Adults
Day ticket reduced*	4.00	Juveniles (from the age of 15 up to and including the age of 17) · students (from the age of 15) · apprentices · university students · all those over the age of 60 · unemployed persons · 1 accompanying person per Mercedes-Benz ClubCard holder
Day ticket complimentary*	0.00	Children: (up to and including the age of 14) · registered groups of schoolchildren (primary and secondary school) and student groups including accompanying persons (for every 5 schoolchildren/students, 1 accompanying person is free) following registration of the school or university · bus drivers and tour guides accompanying registered groups on the day of the visit · severely disabled visitors · disabled visitors with handicapped ID · Mercedes-Benz ClubCard holders · Museum Pass holders · employees of the Daimler AG · members of ICOM and German Museum Association · journalists · birthday boys/girls on their birthdays
Evening ticket (from 4.30 p.m. to 6 p.m. Ticket desk closes at 5 p.m.)	4.00	See day ticket
Evening ticket reduced (from 4.30 p.m. to 6 p.m. Ticket desk closes at 5 p.m.)	2.00	See day ticket reduced
Groups Groups with more than 10 visitors (regular or reduced)	7.00	See day ticket
Groups reduced Groups with more than 10 visitors	3.00	See day ticket reduced
One-year ticket	32.00	See day ticket
One-year ticket reduced	16.00	See day ticket reduced
Museum Pass available from	82.00	You can get more information at the Mercedes-Benz Classic Contact Center or online at <a href="http://www.museumspass.com">www.museumspass.com</a>
Open Museum tours	4.00	Booking via the Mercedes-Benz Classic Contact Center, at the ticket desk or online (plus admission)
Open architecture tour	4.00	See open Museum tours
Architecture tour for groups	80.00	Booking for groups of up to 20 persons per guide via the Mercedes-Benz Classic Contact Center (plus admission)
Individual group tours	80.00	Booking for groups of up to 20 persons per guide via the Mercedes-Benz Classic Contact Center (plus admission)
Individual group tours outside of regular opening hours	250.00	Booking for groups of up to 25 persons per guide via the Mercedes-Benz Classic Contact Center (plus admission)
Simulator	4.00	All museum visitors over 140 cm; tickets available at the simulator desk inside the exhibition. Payment in cash on location in Legend Room 7.
Guided factory tour of the parent plant Untertürkheim, engine production	4.00	Booking for individual visitors and groups of up to 15 persons (from the age of 16 and over) per guide via the Mercedes-Benz Classic Contact Center or at the ticket desk in combination with a visit to the museum (plus admission)

\*Reductions only on presentation of a valid identification.  
Multiple reductions are not possible.



**Mercedes-Benz**  
The best or nothing.

# 4. Mercedes-Benz Museum – guided tours and factory tour

## Museum tour

Discover 160 vehicle exhibits as well as a wealth of automotive accessories and get an overview of the fascinating history of the automobile at Mercedes-Benz. The chronological tour through the Legend rooms will take you from the dawn of automotive history in 1886 through to the present day. The Museum also houses epoch-bridging exhibits set out in five thematic Collection rooms.

## Open Museum tours

Tuesday to Sunday, 11 a.m. (in English)

Tuesday to Sunday, 2.30 p.m. (in German)

Tickets: Available at the ticket desk/

4 euros plus admission fee

Booking via Online-Ticketing at

[www.mercedes-benz-classic.com/museum](http://www.mercedes-benz-classic.com/museum)

and via the Mercedes-Benz Classic Contact Center

## Individual group tours

(up to 20 participants per guide)

Booking via the Mercedes-Benz Classic

Contact Center

Price: 80 euros per group

(plus individual entry fees)

## Individual group tours

outside of regular opening hours

(up to 25 participants per guide)

Booking via the Mercedes-Benz Classic

Contact Center

Price: 250 euros per group

(plus individual entry fees)

## Digital Museum Guide

The bilingual app turns your iPhone, iPad or iPod touch into a digital museum guide. This can be used at home, while travelling or on site, at your preference.

Further information at

<http://itunes.apple.com/de/app/mercedes-benz-classic/id399398713>

## Electronic Audio Guide

In addition, electronic Audio Guides featuring a selection of eight languages are provided free of charge for groups wishing to explore the museum without a personal tour guide. There is a special profile for children as well.

## Fascination of Technology:

### Hands-On Exhibition

The Fascination of Technology section offers an exclusive selection of visionary designs and models which have not been presented before. Here you can gain a comprehensive insight into the philosophy and design process of the Mercedes-Benz designers.

The integrated Hands-On Exhibition will fill families with enthusiasm for the topic of design. Children and young people have the opportunity to realise their own designs: here they can sketch, model and shape their individual car of the future. The free workshop takes place every Saturday and Sunday from 10 a.m. to 5 p.m. in the Fascination of Technology area. You can register directly on site.

We do apologise if occasionally it may be necessary to wait.

## Architecture tour

Gain an insight into the unique design of the Mercedes-Benz Museum by taking a special guided tour with architectural and conceptual focuses. Take a closer look inside the fascinating world of this extraordinary building.

## Open architecture tour

Fridays, 4 p.m. (in German)

Duration: Approx. 90 minutes

Tickets: Available at the ticket desk/

4 euros plus admission fee

Booking via Online-Ticketing at

[www.mercedes-benz-classic.com/museum](http://www.mercedes-benz-classic.com/museum)

and via the Mercedes-Benz Classic Contact

Center

## Architecture tour for groups

(up to 20 participants per guide)

Booking via the Mercedes-Benz Classic

Contact Center

Price: 80 euros per group

(plus individual entry fees)

## Factory tour Untertürkheim\*

Guided tours of the Motorenwerk Untertürkheim facility can be arranged for museum visitors during regular times of production. This is a production site for major assemblies where engines, transmissions and axles are manufactured.

For insurance purposes only visitors over the age of 16 are permitted to take part in the factory tours. Participation is only possible with sturdy closed footwear. Photography and filming is not permitted in the factory. The tours take place during production. It is therefore essential, for security reasons, that participants have a good understanding of the language the tour is conducted in.

\* There is no barrier-free access available for the factory tour.

Factory tour for individual visitors and groups (up to 10 persons)

Wednesdays and Thursdays, 11.45 a.m.

(in German)

Tuesdays and Fridays, 11.45 a.m.

(in English)

Duration: Approx. 90 minutes

Booking via Online-Ticketing at

[www.mercedes-benz-classic.com/museum](http://www.mercedes-benz-classic.com/museum),

via the Mercedes-Benz Classic Contact

Center or on the day you visit the Museum at

the ticket desk of the Museum on availability.

Available only in combination with a visit to

the Museum/4 euros plus admission fee for

the Museum.

Factory tours for professional groups

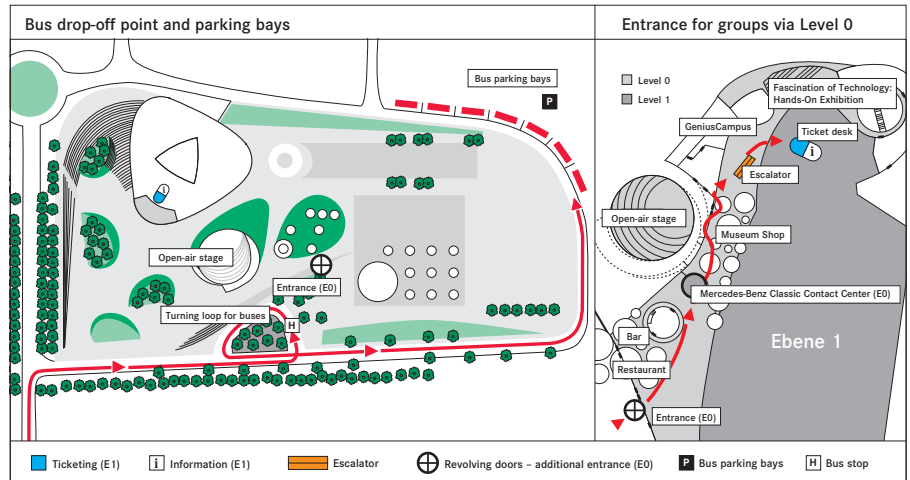
(10 up to 30 people)

Groups of trade visitors with technical know-how please contact Mr Thomas Thum via e-mail ([werkbesichtigung.ut@daimler.com](mailto:werkbesichtigung.ut@daimler.com)).



**Mercedes-Benz**  
The best or nothing.

# 5. Mercedes-Benz Museum – information for groups



### Individual advice and tailor-made offers

Create a visit tailored to your special requirements. Why not combine your museum visit with an expert guided tour, a pit stop in the restaurant and a personal souvenir from the Museum Shop? Employees at the Mercedes-Benz Classic Contact Center will be pleased to help you plan your visit.

### Pricing

Groups with more than 10 paying visitors get a discount on their entrance. By purchasing more than 50 tickets you will receive a further price reduction. For more information about the special pricing, please contact the Mercedes-Benz Classic Contact Center.

### Free on-site bus parking

On arrival at the Mercedes-Benz Museum you will have access to several free on-site bus parking bays (see map above). Please pay heed to the street signs on location, too. Groups arriving by bus can also be dropped off at the Museum's on-site turning loop.

### Reduced waiting times

Groups are also given priority at admission. To reduce waiting times, a separate group admission counter is available for registered groups visiting the Museum.

### Service for bus drivers/tour guides

As a bus driver or tour guide accompanying registered groups, you can enjoy free admission on the day of the visit. As a driver you are entitled to a snack at the restaurant. An admission ticket and food voucher are available at the ticket desk in the entrance area. Please have your bus driving licence and the confirmation of your group visit handy when you register at the ticket desk in the Mercedes-Benz Museum.

For questions and reservations, please contact the Mercedes-Benz Classic Contact Center. We will be happy to advise you personally on the lowest level of the building, the Passage.

### Contact and reservations

Mercedes-Benz Classic Contact Center  
 Phone: +49(0)711-17 30 000  
 Fax: +49(0)711-17 30 400  
 E-mail: [classic@daimler.com](mailto:classic@daimler.com)

### Address

Mercedes-Benz Museum  
 Mercedesstraße 100  
 70372 Stuttgart, Germany

### Further information online at

[www.mercedes-benz-classic.com/museum](http://www.mercedes-benz-classic.com/museum)



**Mercedes-Benz**  
 The best or nothing.