

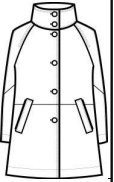
SAMPLE REQUEST

00Z8-243 ORIGINAL

G-III APPAREL GROUP

FOLDER SUMMARY & FRONT/BACK VIEW

STYLE:00Z8-243 ORIGINAL	FOLDER DESCRIPTION	DATE PAGE CREATE: 15 Oct 07 05:00 PM
SEASON:FALL 2008	STAND COLLAR CAR COAT	
DIVISION00 G-III LADIES		DATE PAGE MOD: 15 Oct 07 05:10 PM
FABRIC-SKIN:LEATHER	COUNTRY OF ORIGIN:	PROD SMPL STATUS PROD SMPL STATUS (TOP) DATE
PRODUCT TYPE:COATS		FOLDER APPRVD BY:

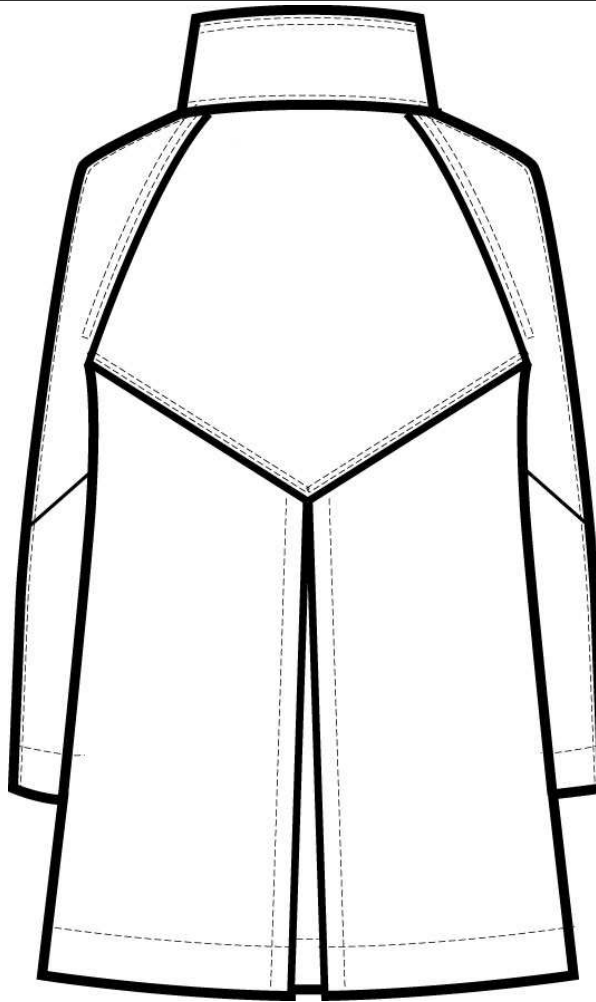
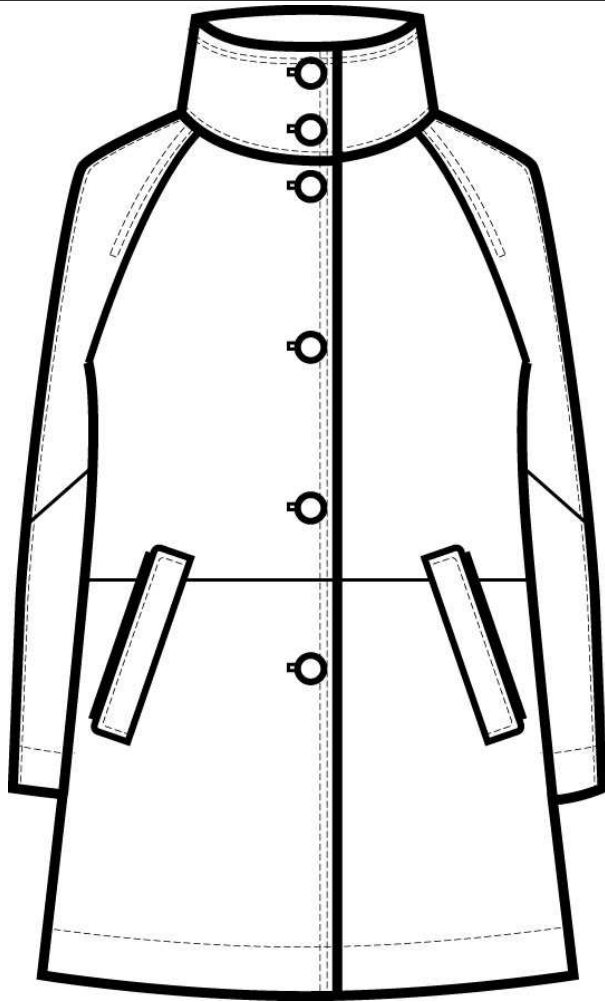


SIZE SCALE	CUSTOMER
STORE SPECIAL No	STYLE NUMBER
SIZE TYPE	
BASIC FABRIC	SAMPLE REQUEST
DIVISION SUB	ANY COST LISTED ARE FOR SAMPLE PRICING ONLY NOT FOR BULK PRICING

17R7-013 BACK

17R7-013 FRONT

MEMO



SAME PATTERN AS 8607-428

TOPSTITCHING

- ~ Edge Topstitching - - - - - Along the collar neckline seam
- ~ Double Needle Topstitching - - - - - Collar edge, CF edge, front & back upper armhole seam 8" down, back yoke seam, along welt pocket entry, shoulder seam down along sleeve center
- ~ 1 1/2" Topstitching - - - - - Along sweep
- ~ 1" Topstitching - - - - - Along cuff opening
- ~ 1 1/4" Topstitching - - - - - Along the back inverted pleat

BOUND BUTTONHOLES

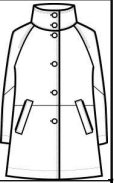
SAMPLE REQUEST

00Z8-243 ORIGINAL

G-III APPAREL GROUP

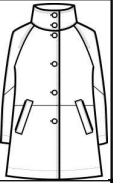
FRONT DETAILS #1

STYLE:00Z8-243 ORIGINAL	FOLDER DESCRIPTION	DATE PAGE CREATE: 15 Oct 07 05:00 PM
SEASON:FALL 2008	STAND COLLAR CAR COAT	
DIVISION00 G-III LADIES		DATE PAGE MOD: 15 Oct 07 05:00 PM
FABRIC-SKIN:LEATHER	COUNTRY OF ORIGIN:	PROD SMPL STATUS PROD SMPL STATUS (TOP) DATE
PRODUCT TYPE:COATS		FOLDER APPRVD BY:

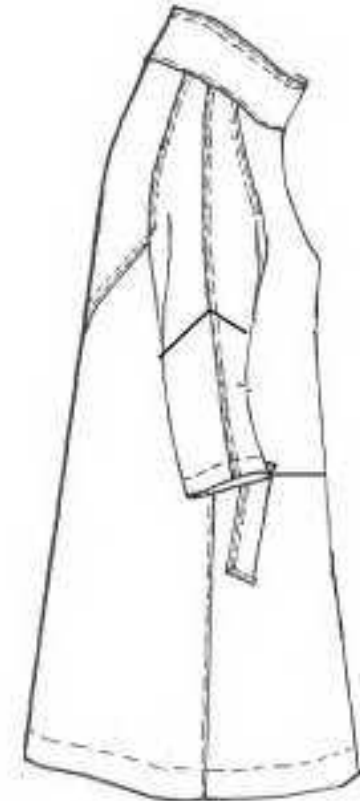
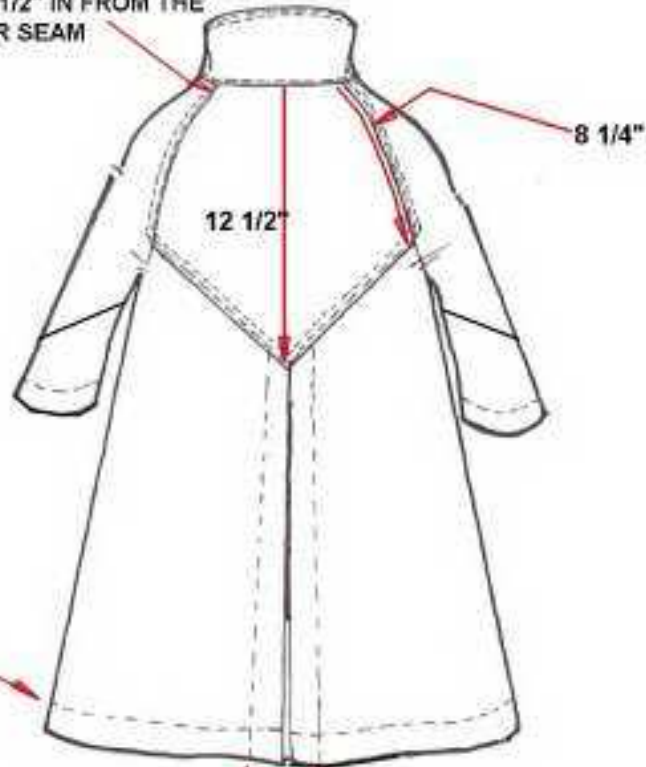


FRONT DETAILS #1

STYLE:00Z8-243 ORIGINAL	FOLDER DESCRIPTION	DATE PAGE CREATE: 15 Oct 07 05:00 PM
SEASON:FALL 2008	STAND COLLAR CAR COAT	
DIVISION00 G-III LADIES		DATE PAGE MOD: 15 Oct 07 05:00 PM
FABRIC-SKIN:LEATHER	COUNTRY OF ORIGIN:	PROD SMPL STATUS PROD SMPL STATUS (TOP) DATE
PRODUCT TYPE:COATS		FOLDER APPRVD BY:



THE BACK ARMHOLE SEAM
STARTS 1 1/2" IN FROM THE
SHOULDER SEAM

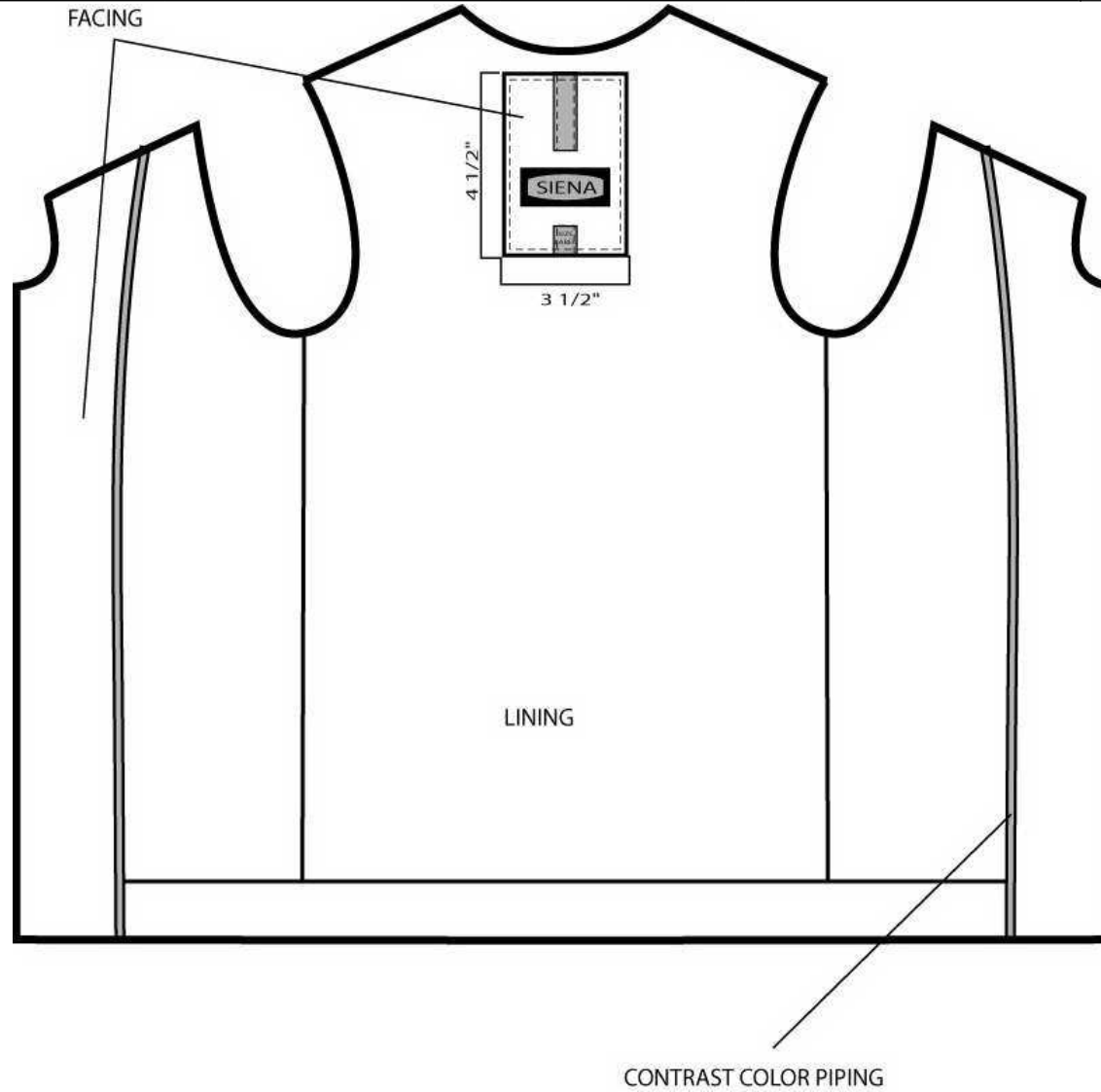
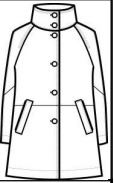


1 1/2" Topstitching

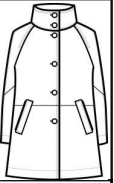
4 1/2" INVERTED PLEAT

FRONT DETAILS #1

STYLE:00Z8-243 ORIGINAL	FOLDER DESCRIPTION	DATE PAGE CREATE: 15 Oct 07 05:00 PM
SEASON:FALL 2008	STAND COLLAR CAR COAT	
DIVISION00 G-III LADIES		DATE PAGE MOD: 15 Oct 07 05:00 PM
FABRIC-SKIN:LEATHER	COUNTRY OF ORIGIN:	PROD SMPL STATUS PROD SMPL STATUS (TOP) DATE
PRODUCT TYPE:COATS		FOLDER APPRVD BY:



STYLE:00Z8-243 ORIGINAL	FOLDER DESCRIPTION	DATE PAGE CREATE: 15 Oct 07 05:00 PM
SEASON:FALL 2008	STAND COLLAR CAR COAT	
DIVISION00 G-III LADIES		DATE PAGE MOD: 15 Oct 07 05:00 PM
FABRIC-SKIN:LEATHER	COUNTRY OF ORIGIN:	PROD SMPL STATUS PROD SMPL STATUS (TOP) DATE
PRODUCT TYPE:COATS		FOLDER APPRVD BY:



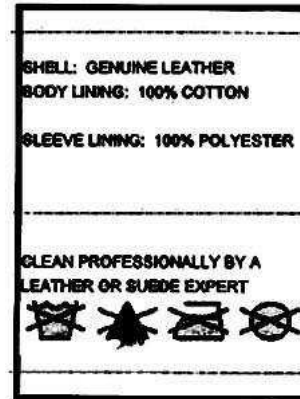
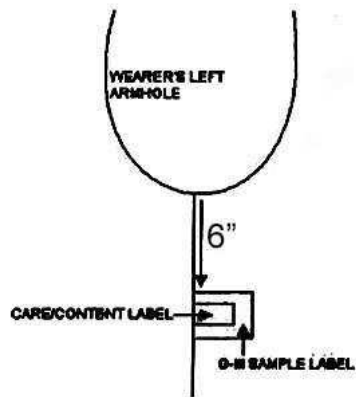
******* MATERIAL CARDS MUST BE SUBMITTED AND APPROVED BEFORE BEGINNING BULK PRODUCTION.*******

ALL DEVELOPMENT/SHOWROOM & FIT SAMPLES FOR ALL DIVISIONS FROM ALL FACTORIES MUST CONTAIN THE FOLLOWING:

1. PAPER 'CARE/CONTENT LABEL' INSERTED IN LEFT SIDE SEAM 6" DOWN FROM BASE OF ARMHOLE. THIS LABEL CAN BE PRINTED. PRINT SHOULD BE BLACK WITH WHITE BACKGROUND. SIZE IS NOT CRITICAL AS LONG AS ALL PRINT IS LEGIBLE.

2. G-III SEW-IN SAMPLE LABEL. INSERTED AT WEARER'S LEFT SIDE SEAM 6" DOWN FROM BASE OF ARMHOLE, LAYERED BEHIND CARE/CONTENT LABEL.

G-III N.Y. or G-III Korea can supply you with this label until the factory has developed with their own label supplier.



SEWING LINE / SEAM ALLOWANCE

FACTORY MUST USE BEST JUDGEMENT IN EXECUTING THIS LABEL

FOLD LINE

DO NOT REQUEST DESIGN TO APPROVE OR VERIFY!!!!!!!!!!!!!!

SEWING LINE / SEAM ALLOWANCE

SEWING LINE/
SEAM ALLOWANCE

FOLD LINE

SEWING LINE/
SEAM ALLOWANCE

THE GIII APPAREL GROUP

This garment and it's design are the property of the G-III Apparel Group. Neither the garment nor its sketched or photographic likeness may be circulated without our consent.

Ref # _____

Style # _____

Shell Material _____

Color _____

Sample Type _____

Vendor# _____ Date _____

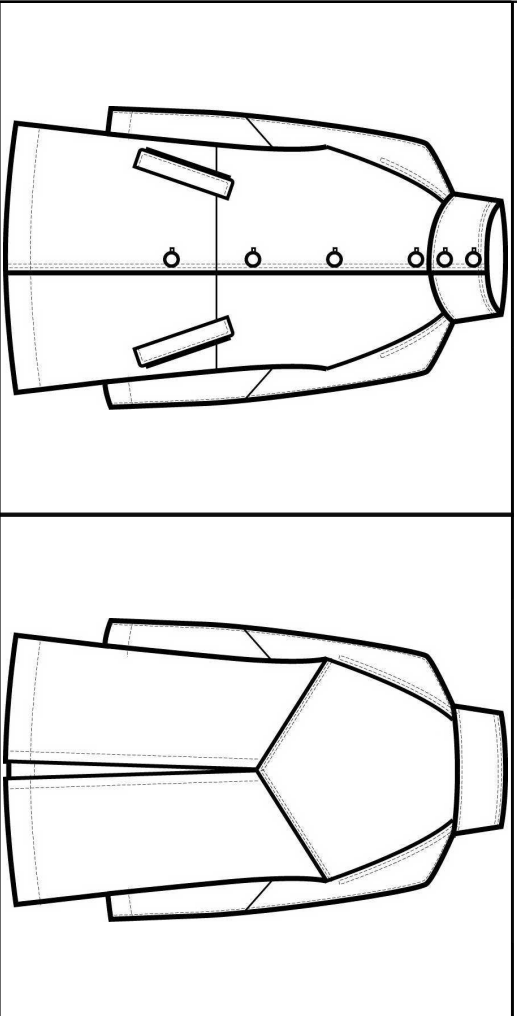
SAMPLE REQUEST

0028-243 ORIGINAL

G-III APPAREL GROUP

GIII GRADE RULE / GRADED SPEC SHEET

STYLE:0028-243 ORIGINAL	FOLDER DESCRIPTION	DATE PAGE CREATE: 15 Oct 07 05:00 PM
SEASON:FALL 2008	STAND COLLAR CAR COAT	
DIVISION00 G-III LADIES	COUNTRY OF ORIGIN:	DATE PAGE MOD: 15 Oct 07 05:00 PM
FABRIC-SKIN:LEATHER		PROD SMPL STATUS PROD SMPL STATUS (TOP) DATE
PRODUCT TYPE:COATS		FOLDER APPRVD BY:



Company: G-III Ladies
 Product Type: Tops XS - XXXL (GIII Ladies)
 Sample Size: M
 Size Class: Missy & Petite Tops
 Approval Status: Neither approved nor rejected
 Approval Note:
 UOM: Imperial(in)
 Shown As: Incremental

Selected Range: XS, S, M, L, XL

P O M	Description	Tol (-)	Tol (+)	XS	S	[M]	L	XL
300	Chest(1"below armhole)	-1/2	1/2	-2	-2	42	3	3
303b	Sweep Relaxed [vent closed]	-1/2	1/2	-2	-2	56	3	3
304	CB Length	-3/8	3/8	-1/2	-1/2	32	1/2	1/2
305	Sleeve Length from CBN	-3/8	3/8	-5/8	-5/8	33	5/8	5/8
324	Shoulder Slope	-1/8	1/8	0	0	1 3/4	0	0
328	Overlap	-1/4	1/4	0	0	1 3/4	0	0
333	Muscle(1" down from armhole)	-3/8	3/8	-1/2	-1/2	14	3/4	3/4
335	Cuff Opening	-1/4	1/4	-1/4	-1/4	11	1/4	1/4
342	CB Collar Height	-1/8	1/8	0	0	3	0	0
344	Collar Point	-1/8	1/8	0	0	3	0	0
345	Clir- ight(outside edge curved)	-3/8	3/8	-3/4	-3/4		3/4	3/4
349	Neck Width(HPS to HPS)	-1/4	1/4	-1/4	-1/4	7 1/2	1/4	1/4
351	Front Neck Drop from HPS	-1/8	1/8	-1/8	-1/8	3 1/2	1/8	1/8
359a	Body Pocket Length	-1/4	1/4	0	0	6 1/2	0	0
359b	Body Pocket Width	-1/4	1/4	0	0	1 1/2	0	0
360a	Body Pocket Placmnt from HPS	-1/8	1/8	-3/8	-3/8	18 1/2	3/8	3/8
327a	Across Front Raglan(5" dn HPS)	-3/8	3/8	-1/2	-1/2	13	3/4	3/4
332	Raglan Front Armhole	-3/8	3/8	-1/2	-1/2	11	3/4	3/4
307	Raglan Back Armhole	-3/8	3/8	-1/2	-1/2	12	3/4	3/4
312b	Across Back Raglan(4" down)	-3/8	3/8	-1/2	-1/2	12	3/4	3/4
312c	Across bck Raglan(6" down)	-3/8	3/8	-1/2	-1/2	14 1/2	3/4	3/4

3:WARPPAML:rp:WorShieez2 (W: 5.0.60; P: 5.0.60)

SAMPLE REQUEST PACKAGE

00Z8-243 ORIGINAL

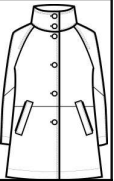
G-III APPAREL GROUP

GIII FABRIC/TRIM DETAILS

STYLE:00Z8-243 ORIGINAL
 SEASON:FALL 2008
 DIVISION00 G-III LADIES
 FABRIC-SKIN:LEATHER
 PRODUCT TYPE:COATS

FOLDER DESCRIPTION
 STAND COLLAR CAR COAT
 COUNTRY OF ORIGIN:

DATE PAGE CREATE: 15 Oct 07 05:01 PM
 DATE PAGE MOD: 15 Oct 07 05:10 PM
 PROD SMPL STATUS PROD SMPL STATUS (TOP) DATE
 FOLDER APPRVD BY:



Color: BLK BLACK BRN BROWN Image

Item/SubFor	Item Detail	Use	Vendor	Combinations							
44/06/45442 PROMO LAMB LEATHER		AS SHELL, ALL PARTS. COLLAR & WAISTBAND ARE QUILTED		BLK BLACK	BRN BROWN						
00/05/3733 COLEBROOK STANDARD POLYESTER TWILL LINING		AS BODY LINING	VENDOR SOURCE RESOU	DTM DYE TO MATCH	DTM DYE TO MATCH						
09/07/53513 CORDING: TRIM		1/8" WIDE, AS PIPING FILL		WHT WHITE	WHT WHITE						
00/05/3733 COLEBROOK STANDARD POLYESTER TWILL LINING			VENDOR SOURCE RESOU	RED RED	RED RED						
17/05/4619 POCKETING FABRIC: #99-15 P/N MICRO PEACH LINING			VENDOR SOURCE RESOU	DTM DYE TO MATCH	DTM DYE TO MATCH						
65077 sienastudio DTM FILIGREE BUTTON 54L		54L: 6x@CF+1	VENDOR SOURCE RESOU 54L	DTM DYE TO MATCH	DTM DYE TO MATCH						

