



Halloween Bucket

This cute Halloween bucket is just the thing for putting your treats in! There are orange, green and black buckets imaging Jack O' Lantern to choose from. There are loads of extra parts, such as a witch hat, a pirate hat and bat wings. You can also make it appear that the light inside the bucket is turning on and off! Make your own original Halloween bucket and fill it with treats as a present for someone, or go out trick or treating for yourself!

A little wrapping paper, a nice card, etc., a little extra effort goes a long way.

- You will need**
Scissors, glue, a used ball-point pen
- Assembly Tip**
Trace along the folds with a used pen (no ink) to get a sharper, easier fold.
- Caution**
Glue, scissors and other tools may be dangerous to young children, so be sure to keep them out of the reach of young children.

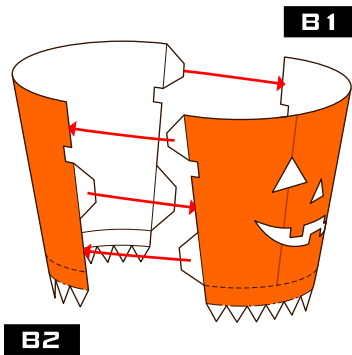
Notation Key

- Mountain fold
- - - - - Valley fold
- Scissors line
- Cut in line
- ✂ Cut out
- Glue
- Glue reverse side

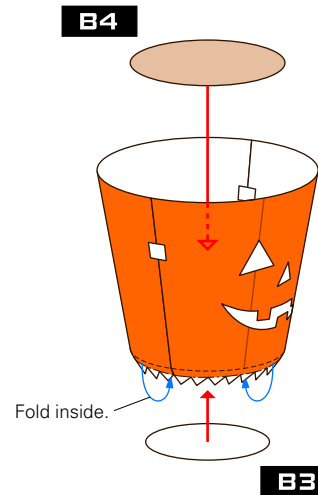
- B1 ~ B14**
▶ BUCKET parts
- C1 ~ C2**
▶ CAP parts
- W1 ~ W6**
▶ WITCH HAT parts
- P1 ~ P4**
▶ PIRATE HAT parts
- BW1 ~ BW2**
▶ BAT WING parts

Assemble the BUCKET

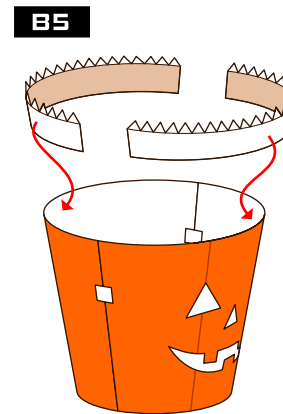
1 Assemble the side.



2 Assemble the base.

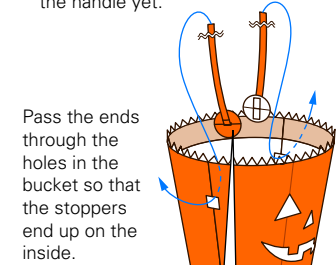


3 Glue the upper parts.



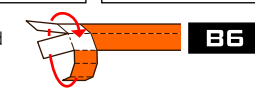
4 Make the handle.

*Do not connect the left and right ends of the handle yet.

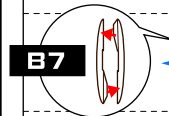


Pass the ends through the holes in the bucket so that the stoppers end up on the inside.

1. Wrap around and glue.



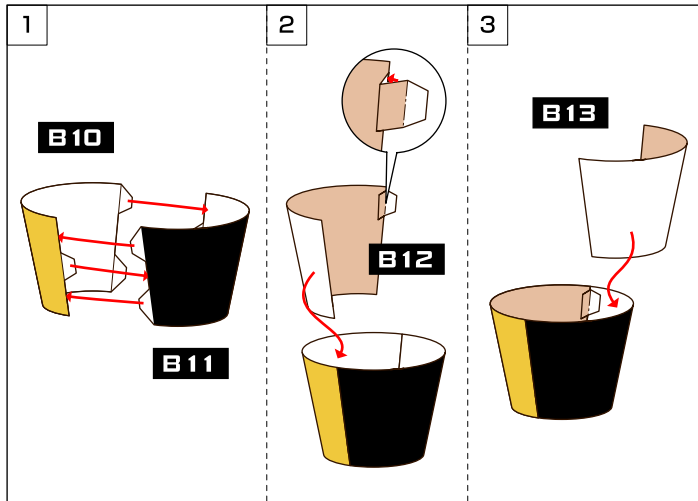
2. Pass the end through the hole.



3. Open out the ends and glue them down.



5 Assemble the rotating part.



Use the tag to turn the rotating part and change the colors of the eyes and mouth.

6 Glue the upper part.



7 Complete!



Assembly of the **BUCKET** is finished.
Assemble the **HAT** before connecting the ends of the handle together.
(Instructions for connecting the ends of the handle are on page 4.)

Assemble the CAP

C1

C2

COMPLETE!

Assemble the WINGS

Make two pairs.

BW1

BW2

Glue them on the side.

COMPLETE!

Assemble the WITCH HAT

W1

W2 **W4** **W3**

W3 **W4** **W2**

W5

W6

Glue the decoration you like.

COMPLETE!

Assemble the PIRATE HAT

P1 **P4**

Make two pairs.

P2

P3

Cut the eye patch string to the length you want and glue it onto the bucket.

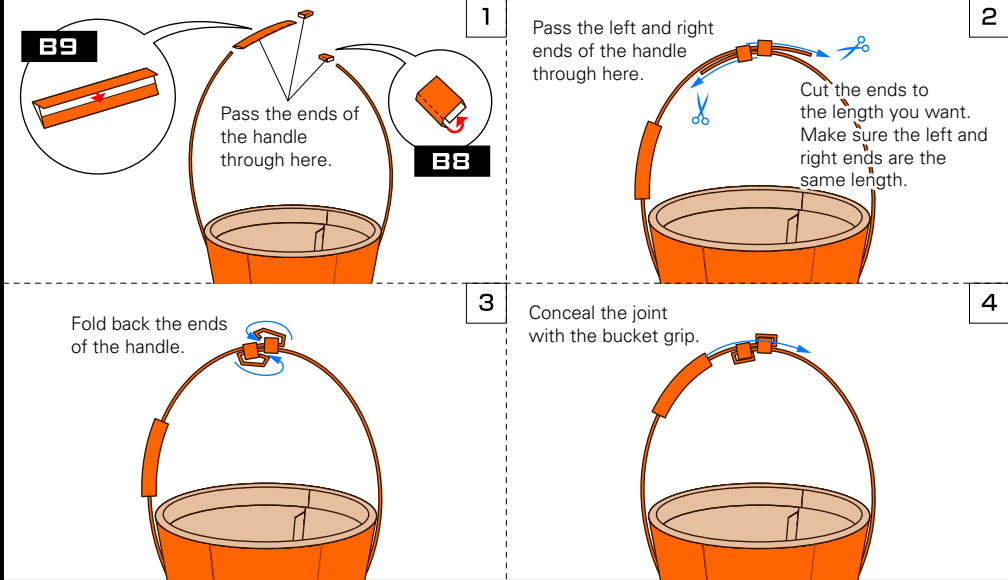
COMPLETE!

Finishing Touches

1 Pass the handle through the hat.



2 Assemble the bucket grip. *In this illustration, the hat is not shown.



3 Complete!!

