

# 2 (CLASS-A)

180 (2007. 01. 11)

2006 12 29

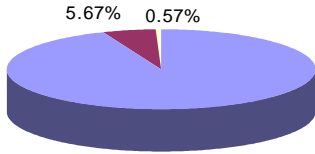
가  
2005 11 01  
90 70%  
( )  
3 : 2 가 4  
3 : 3 가 4  
: 1.7%  
( 0.95%), ( 0.03%)  
( 0.7%), ( 0.02%)

SC

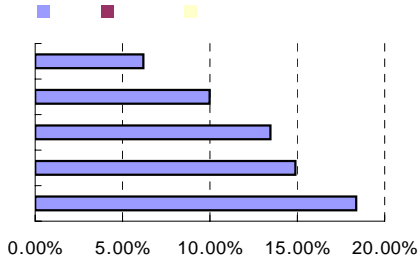
,NH  
- 60% 100%  
- 0% 40%  
가 1041.29 (2006 12 29 )  
1 06-10-31 ( 가:1266.67 )

KOSPI  
7908

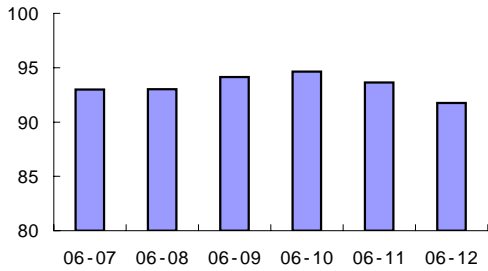
-(\*) )



TOP5



( 5 )	( )	( )
	1,100.7	13.52%
	571.0	7.02%
	428.8	5.27%
	313.9	3.86%
	248.6	3.05%

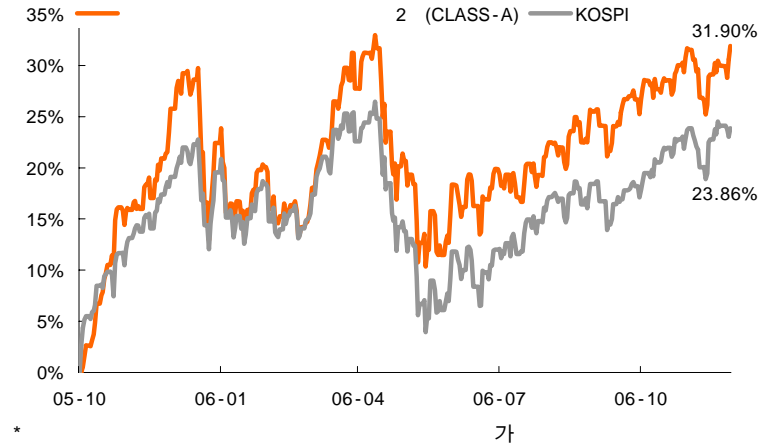


( 6 )

KOSPI	1.63%	1.97%
KOSPI	0.34%	1 ~ 2%
3, 6, 1		
가		

	1	3	6	1	
	1.97%	4.96%	17.06%	6.85%	31.90%
	1.63%	4.60%	15.80%	4.85%	23.86%

\* = KOSPI



\*

KOSPI	1.63%
1,242	1,376
5%	
가	가
12	가
12	가
12	가

1	
---	--

( )가 가 가 가