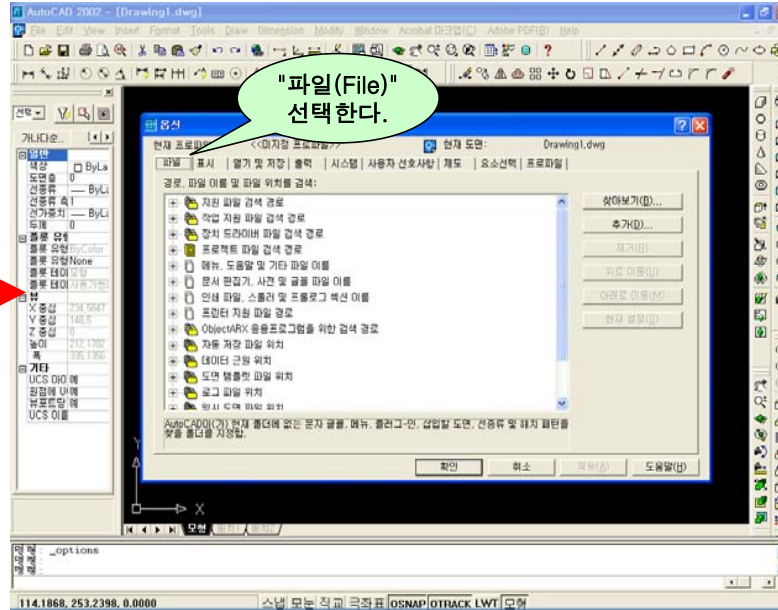
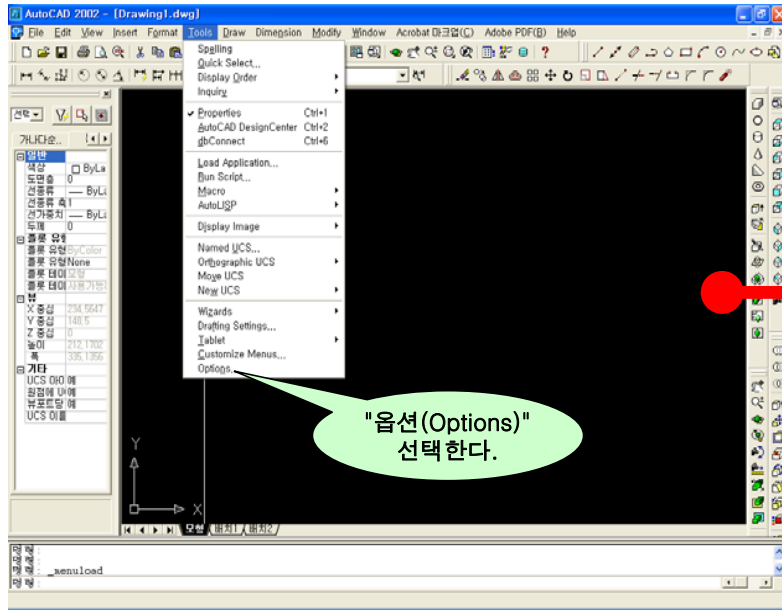
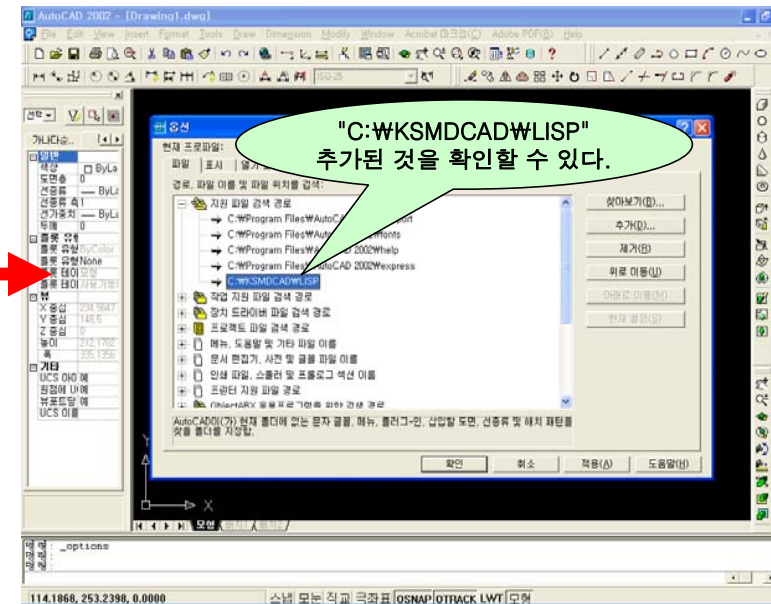
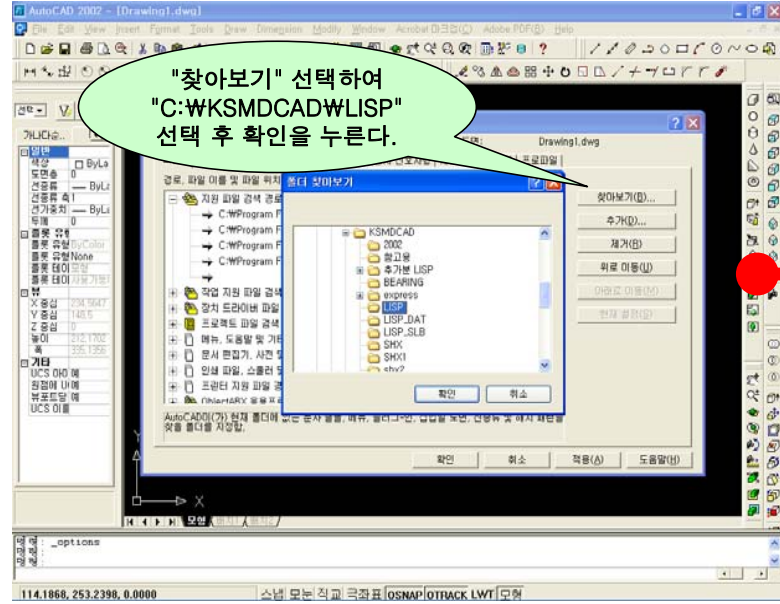
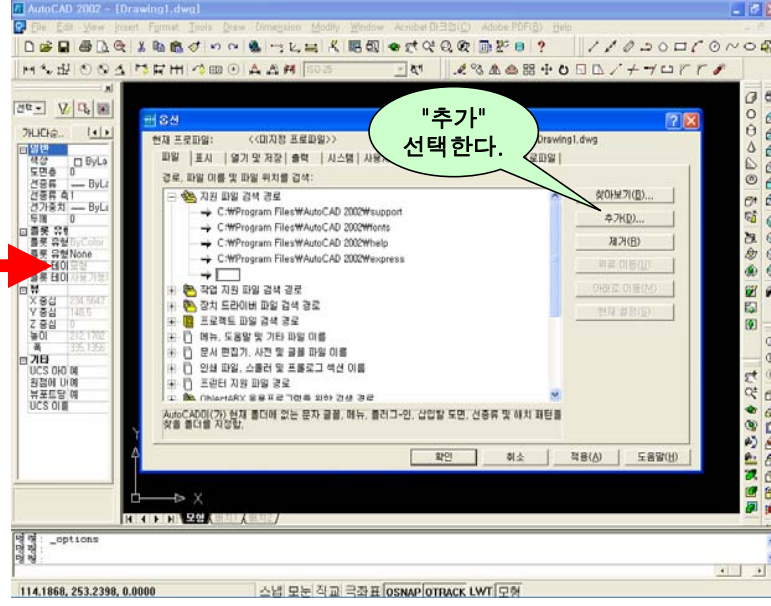
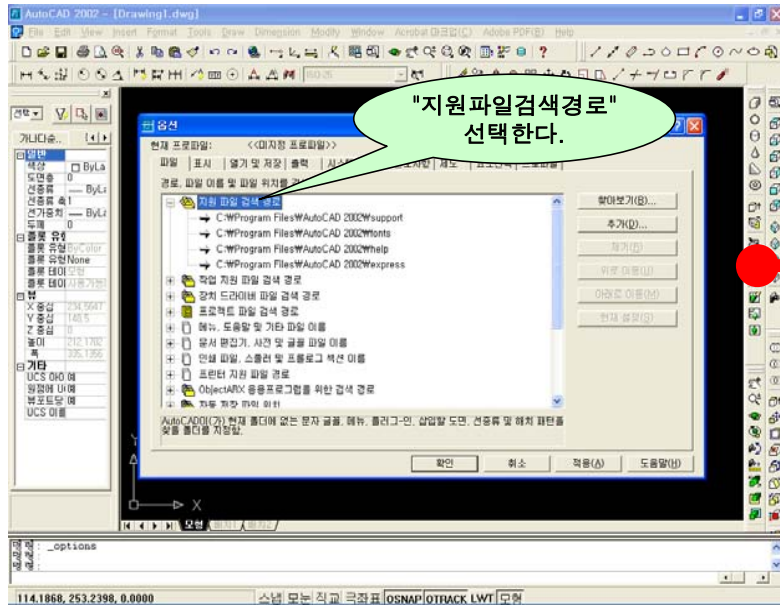
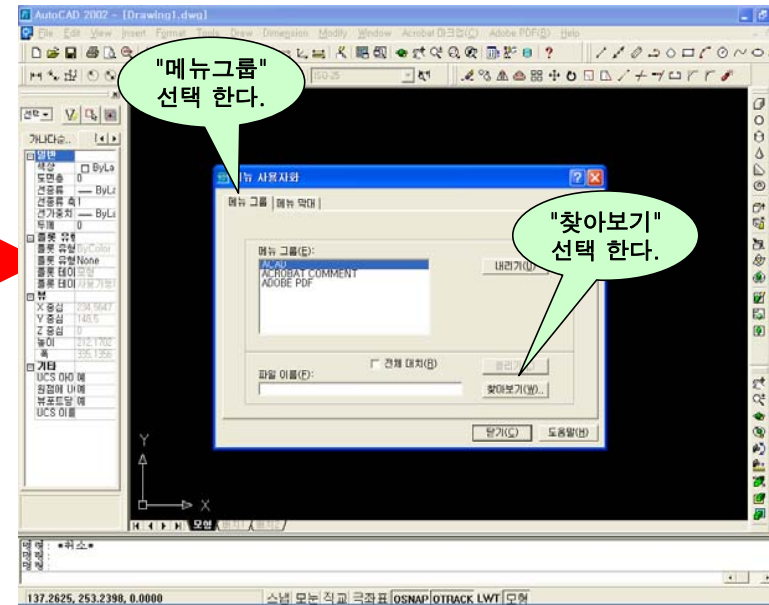
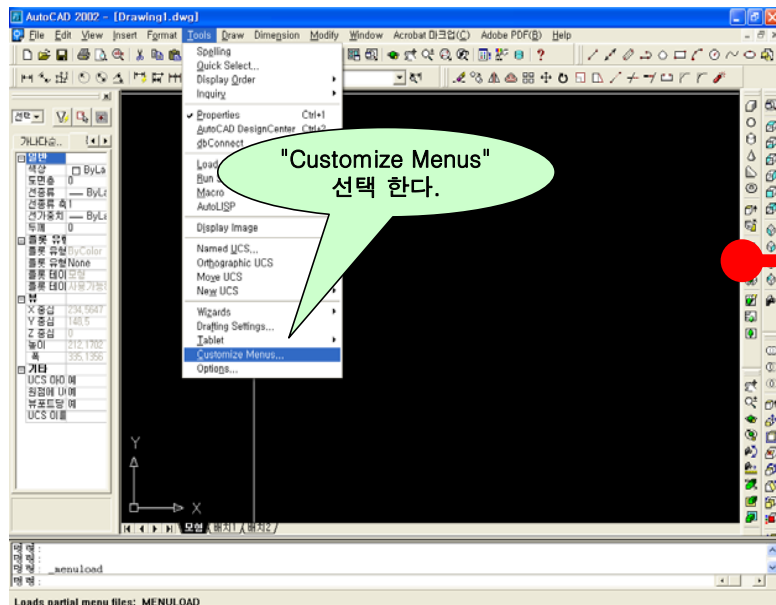
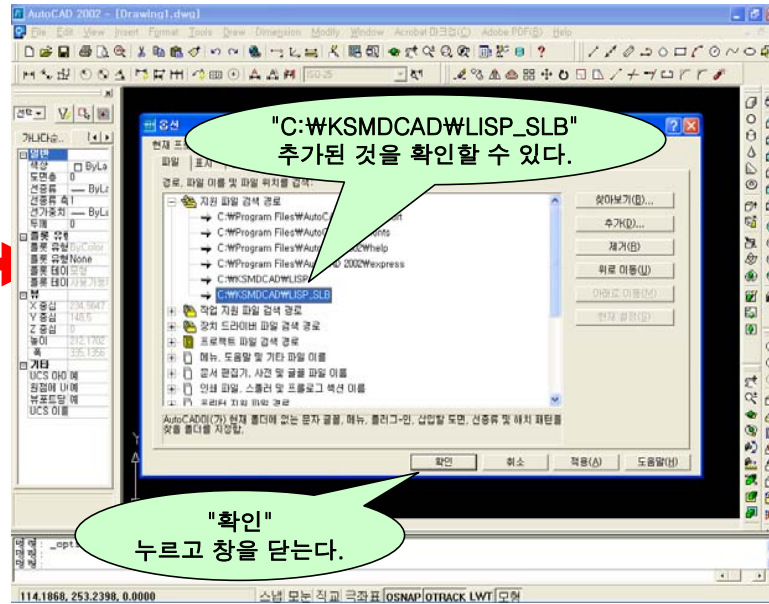
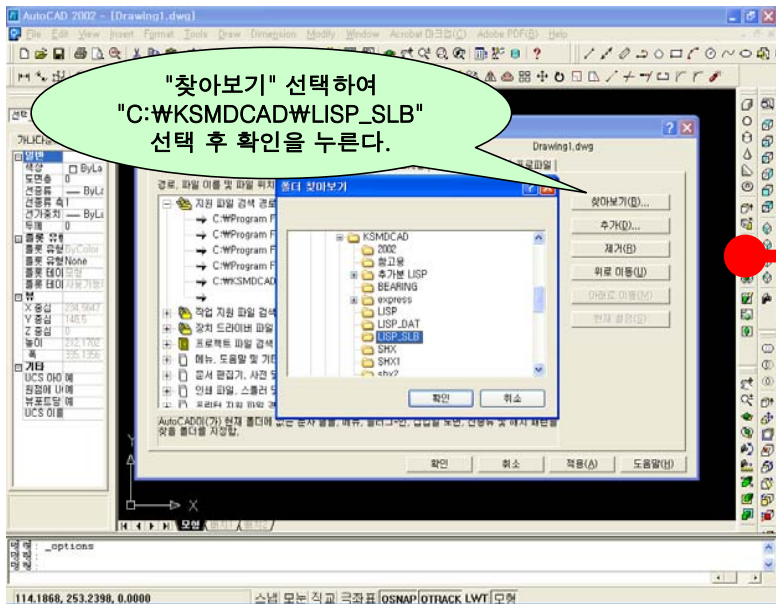


1. 압축 파일을 더블클릭 하여 "C:\WKSMDCAD" 에 압축을 푼다.  
(반드시 "C:\WKSMDCAD" 폴더에 압축을 풀어야 한다.)
2. AUTOCAD를 실행하여 CAD 화면으로 간다.
3. 지원경로를 지정하기 위하여 아래와 같이 한다.(본 설명은 AUTOCAD 2002를 기준으로 작성함.)







Loads partial menu files: MENULOAD

137.2625, 253.2398, 0.0000



