



## 12 FreeBSD

### 12.1

“ ” . FreeBSD  
가 .  
FreeBSD  
FreeBSD init(8)가  
:  
:

- FreeBSD 가
- FreeBSD
- device.hints(5)

x86: x86 FreeBSD

### 12.2

가 .  
가 .  
가 가?

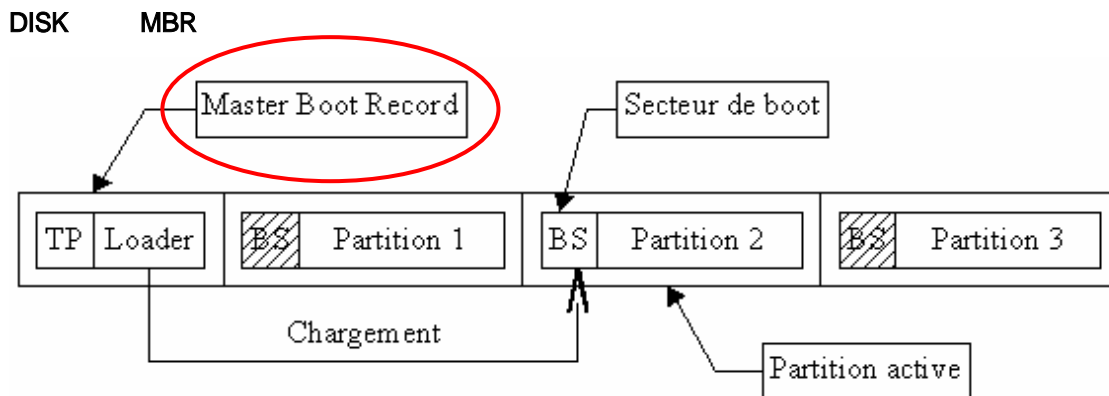
*Adventures of Baron Munchausen*

“ ” 가  
 x86 / (BIOS) 가  
 BIOS (MBR)  
 . BIOS MBR 가  
 MBR

PC BIOS

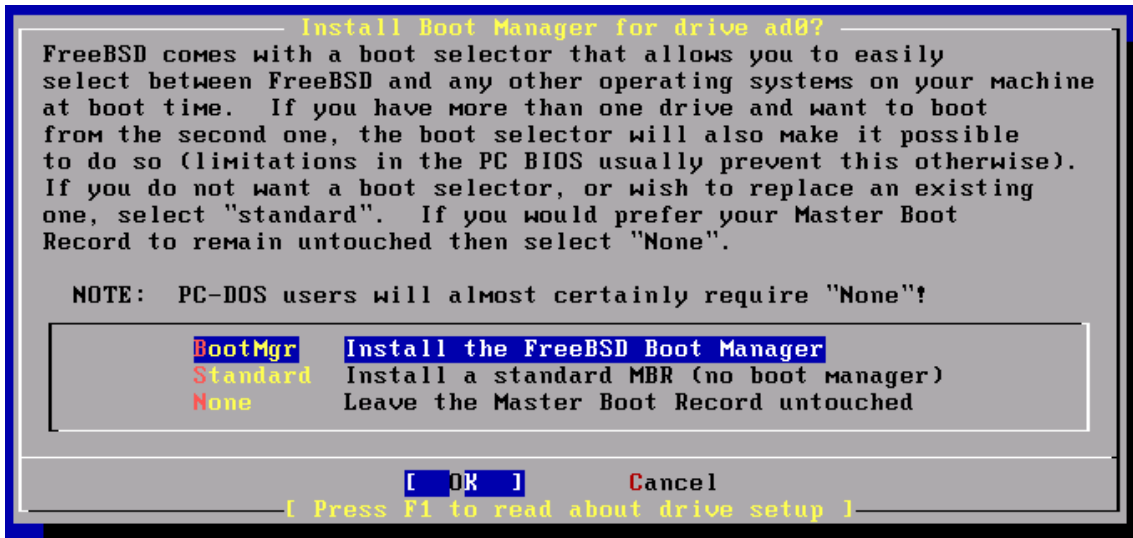


MBR MBR



가 MBR  
 . FreeBSD MBR  
 MBR .

FreeBSD Boot Manager



FreeBSD  
 MBR  
 PC 1 2  
 . FreeBSD  
 가  
 init(8)  
 init(8)  
 FreeBSD

12.3 MBR 1, 2, 3

### 12.3.1 MBR, /boot/boot0

```
FreeBSD MBR /boot/boot0 . MBR FreeBSD
MBR .
```

```
boot0 . MBR 512 boot0
FreeBSD MBR
:
```

#### 12-1. boot0

```
F1 DOS
F2 FreeBSD
F3 Linux
F4 ??
F5 Drive 1

Default: F2
```

```
95, 98 MBR
MBR FreeBSD MBR :
```

```
# fdisk -B -b /boot/boot0 device
```

```
device ad0 IDE , ad2 IDE ,
da0 SCSI
```

#### LILO 가

```
/etc/lilo.conf FreeBSD FreeBSD Leave
The Master Boot Record Untouched . FreeBSD
LILO /etc/lilo.conf 가 :
```

```
other=/dev/hdXY
table=/dev/hdb
loader=/boot/chain.b
```

label=FreeBSD

```

                LILO          FreeBSD
                XY            . SCSI          /dev/hdXY
XY              /dev/sdXY
                가          loader=/boot/chain.b
                /sbin/lilo -v
    
```

### 12.3.2 1: /boot/boo1 2: /boot/boot2

```

                boot0                                MBR
                . /boot
FreeBSD
boot1 512                                boot1      boot2
                가          FreeBSD disklabel
boot2                                FreeBSD
    
```

#### 12-2. boot2

```

>> FreeBSD/i386 BOOT
Default: 0:ad(0,a)/kernel
boot:
    
```

```
boot1 boot2 가 disklabel(8) :
```

```
# disklabel -B diskslice
```



loader(8)

autoboot *seconds*

가  
10

boot [ *-options*] [ *kernelname*]

boot-conf

unload

kernel

help[ *topic*]

/boot/loader.help

. *index*

include *filename* ...

가

load [ *-t type*] *filename*

ls [ *-l*] [ *path*]

가

root

. *-l*



lsdev [ -v ]

. -v .

lsmmod [ -v ]

. -v .

more *filename*

*LINES*가

reboot

set *variable*, set *variable=value*

unload

### 12.3.3.3

가 가 :

- 가  
:

boot -s

- ( )  
:

```
unload  
load kernel.old
```

```
kernel.GENERIC  
(  
kernel.old .
```

**Note:** :

```
unload  
set kernel="kernel.old"  
boot-conf
```

- ( boot-time configurator ) :

```
load -t userconfig_script /boot/kernel.conf
```

## 12.4

( ) boot2 ( ) 가

### 12.4.1

가 :

-a

root .

-C

CDROM .

-C

UserConfig

-V

Note:

boot(8)

## 12.5

Note:

FreeBSD 5.0

boot loader(8) device.hints(5)

“ ”

가

3

set

가

unset

show

./boot/device.hints

kenv(1)

/boot/device.hints

“ # ”

:

hint.driver.unit.keyword=*value*

3

:

set hint.driver.unit.keyword=*value*

driver , *unit* *keyword*

.

- *at:* 가
- *port:* I/O
- *irq:*
- *drq:* DMA
- *maddr:* 가
- *flags:*
- *disabled:* 1

가 ( )

device.hints(5), kenv(1), loader.conf(5)

loader(8)

## 12.6 Init:

/sbin/init init(8) loader init\_path

### 12.6.1

fsck(8) init(8) 가

## 12.6.2

```

                                가 -s                                boot_single
.
                                (-r)   halt(-h)                   shutdown(8)
.
                                /etc/ttys   insecure
root                                가

```

### 12-3. /etc/ttys Insecure

# name	getty	type	status	comments
#				
#	If console is marked "insecure", then init will ask for the root password			
#	when going to single-user mode.			
console	none		unknown of	<b>insecure</b>

**Note:** *insecure* root

```

                                가                                secure가
                                insecure

```

## 12.6.3

```

init(8)가                                가
.

```

### 12.6.3.1 (rc)

/etc/defaults/rc.conf

/etc/rc.conf . /etc/fstab ,

rc(8)  
가 .

## 12.7

shutdown(8) . init(8) /etc/rc.shutdown  
*TERM* . *KILL*

FreeBSD  
shutdown -p now . FreeBSD  
shutdown -r now . shutdown(8) root operator  
halt(8) reboot(8) . halt(8), reboot(8)  
shutdonw(8) .

**Note:** FreeBSD 5.X acpi(4) FreeBSD 4.X apm(4)