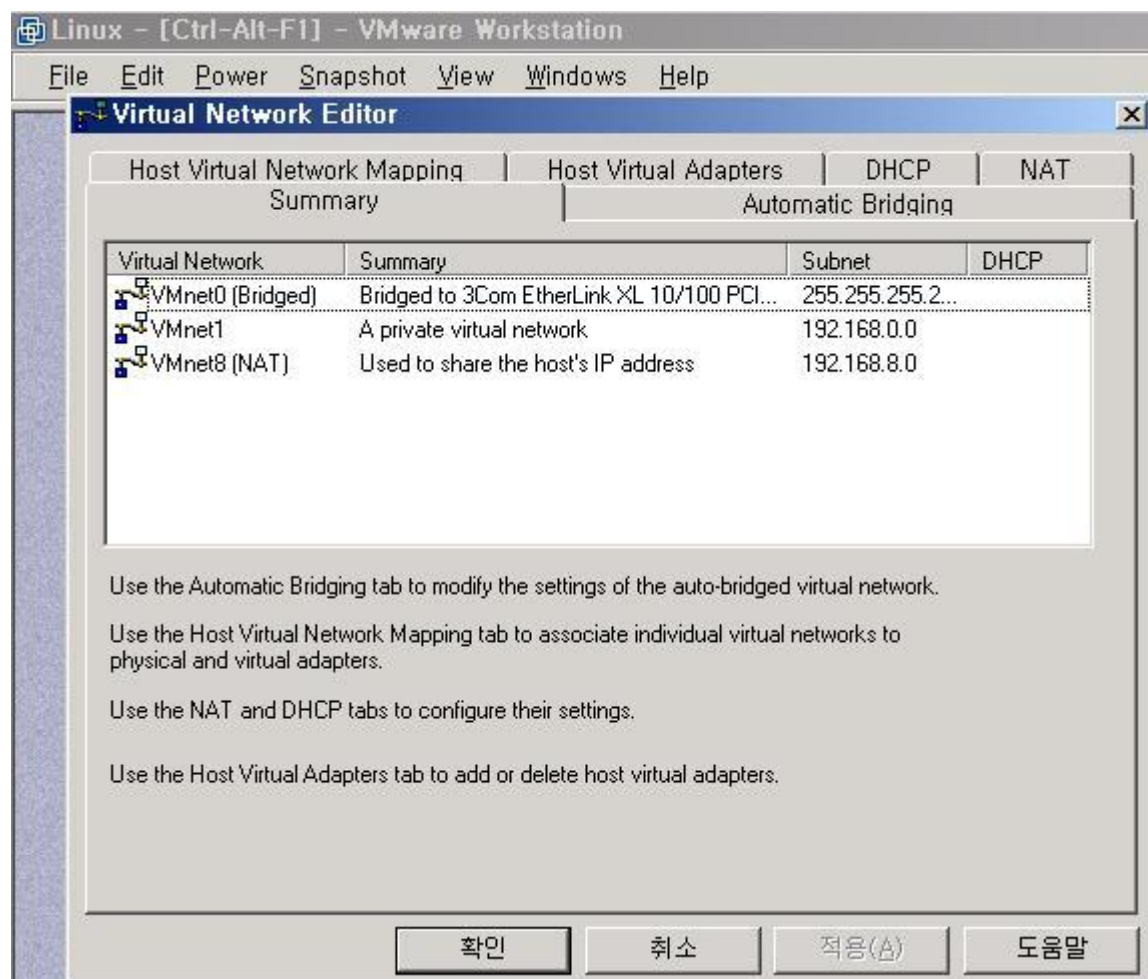
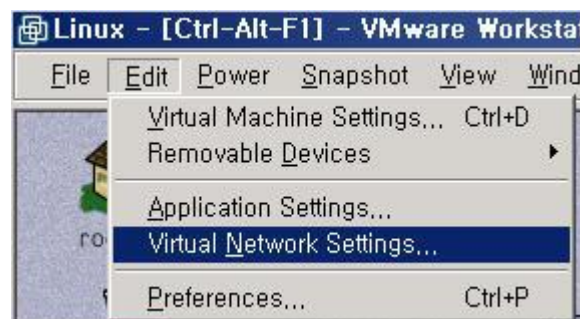
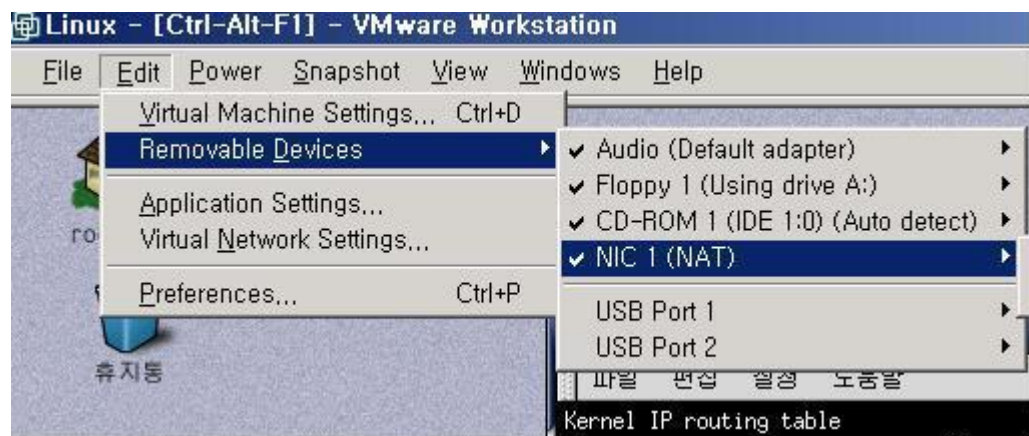
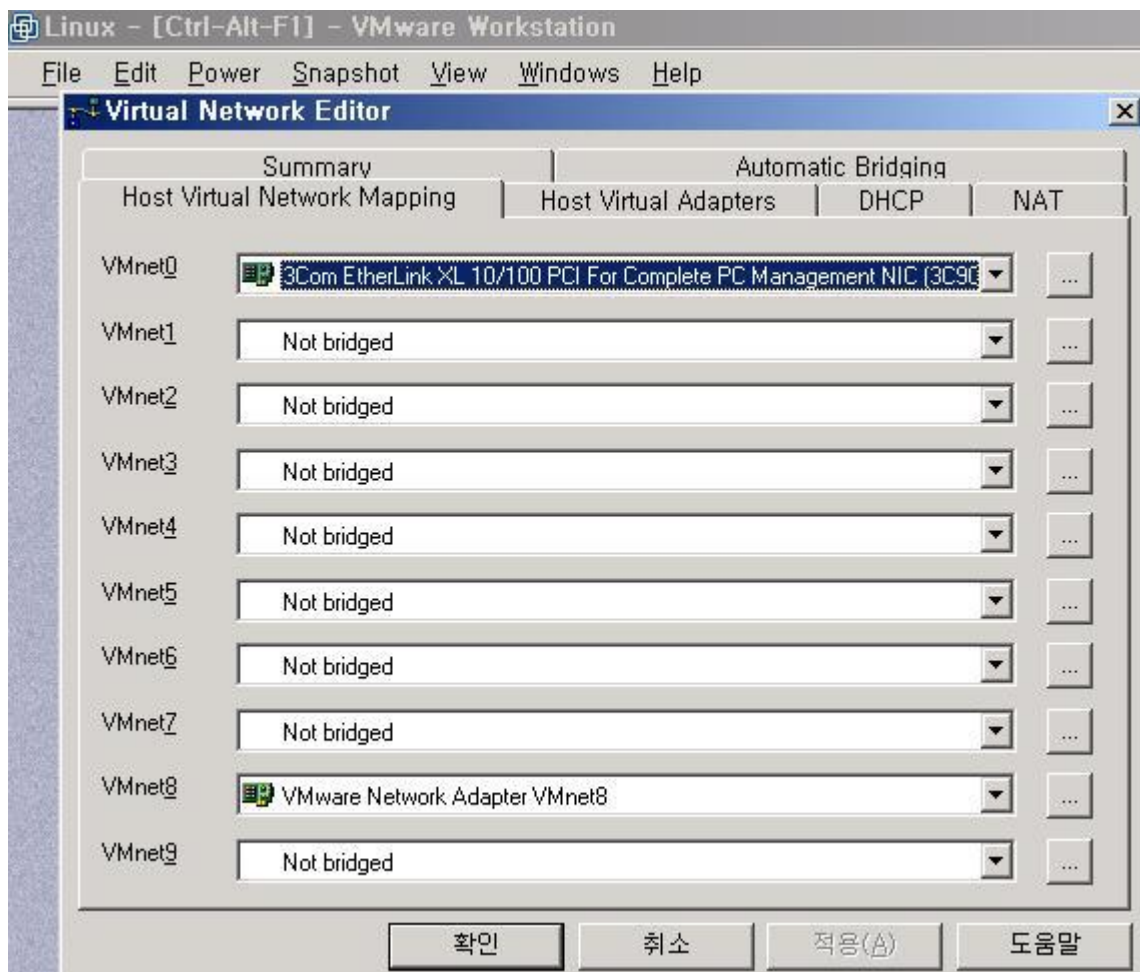
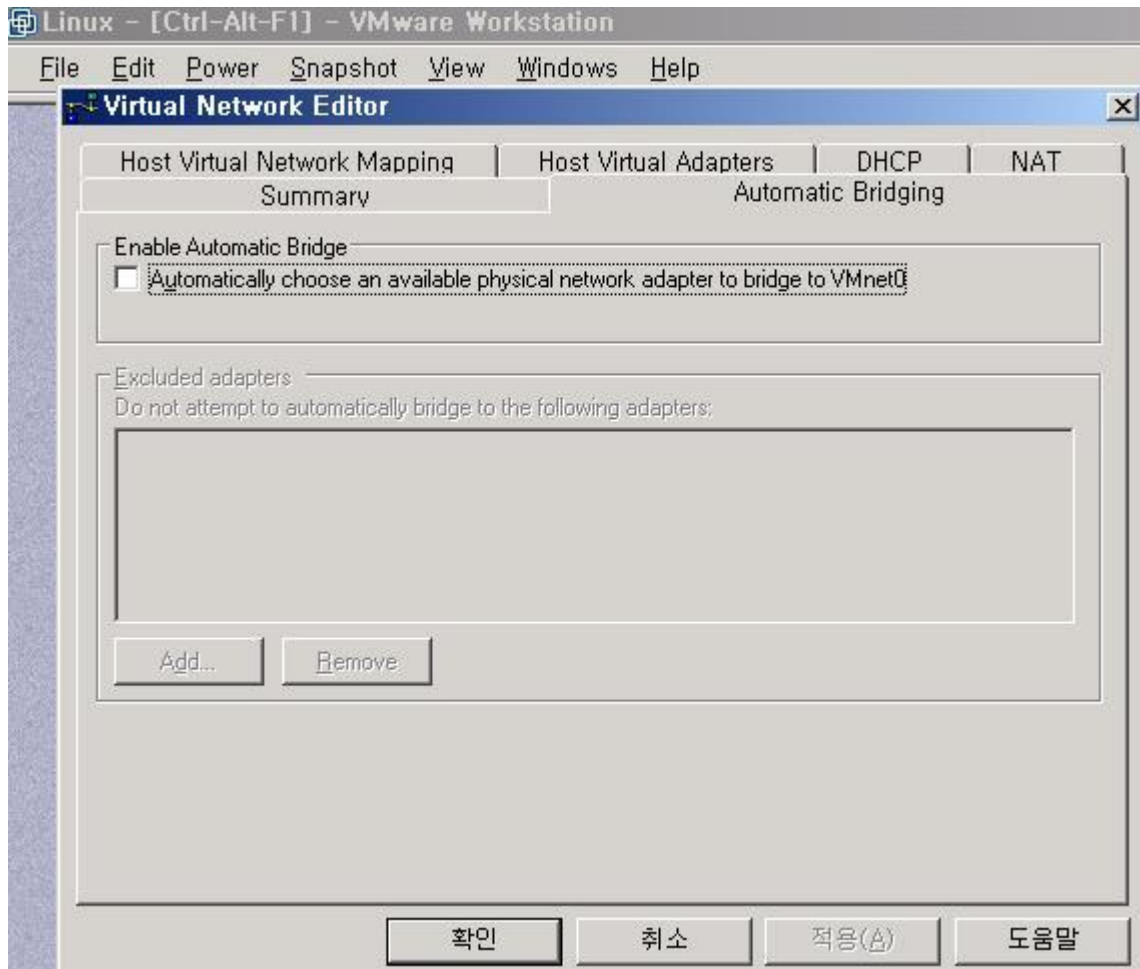
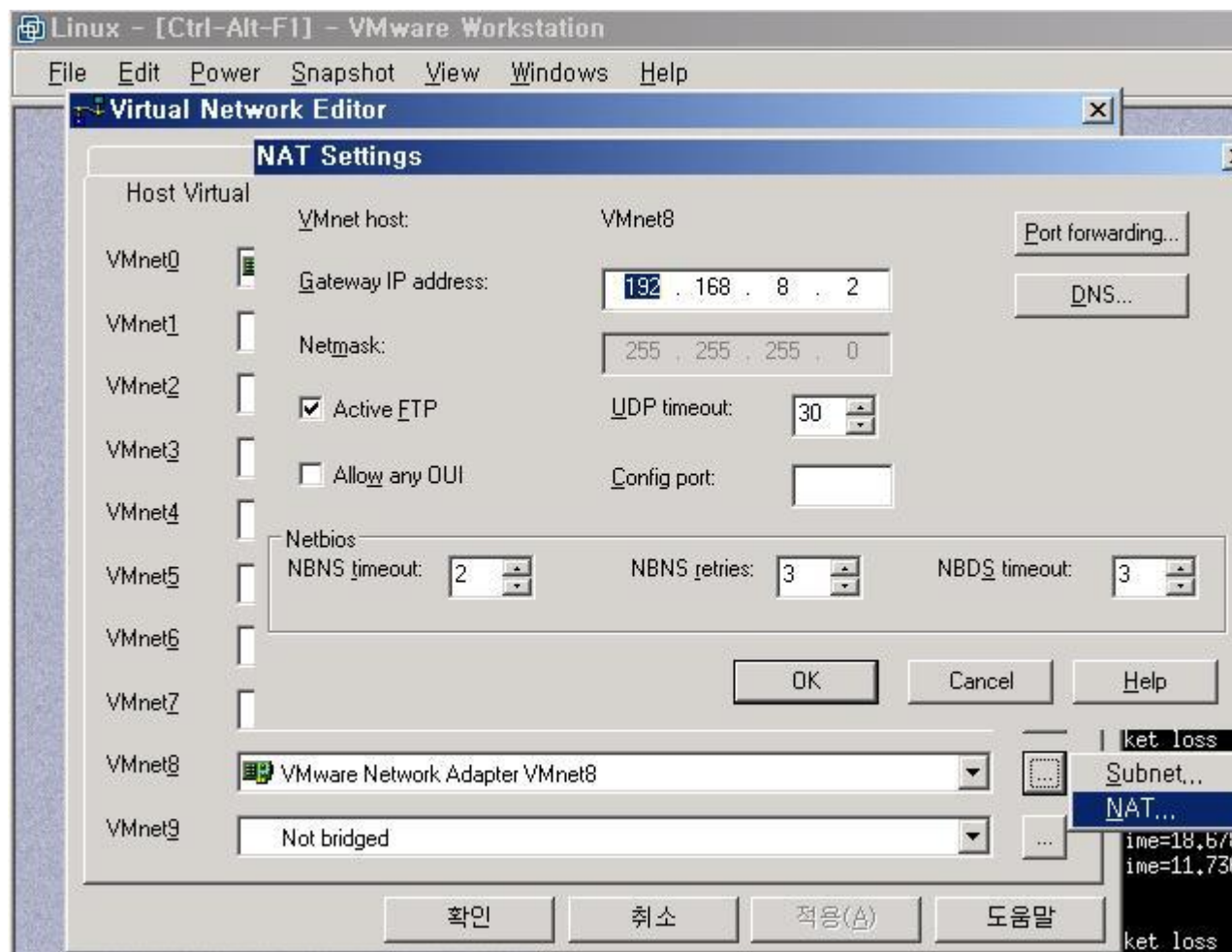
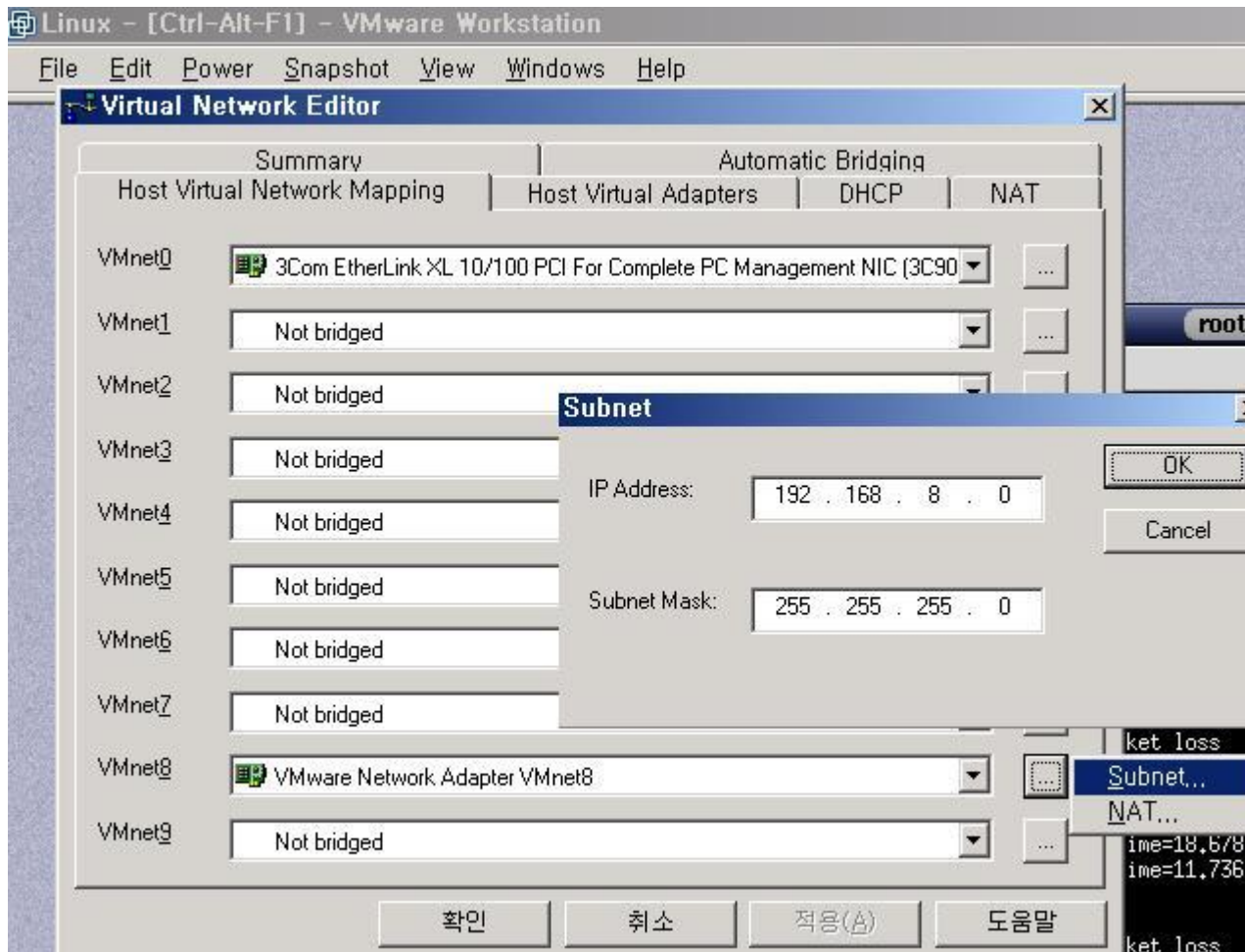
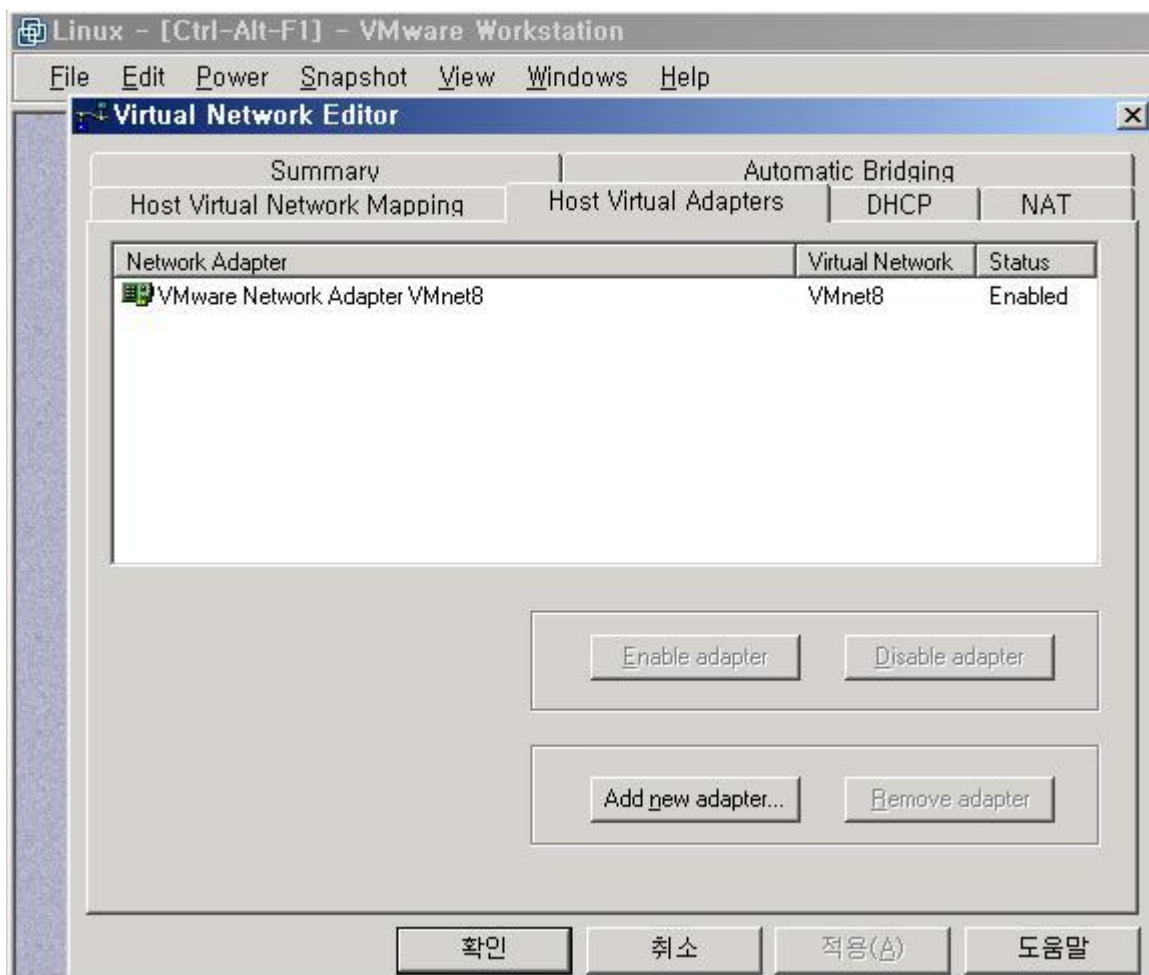
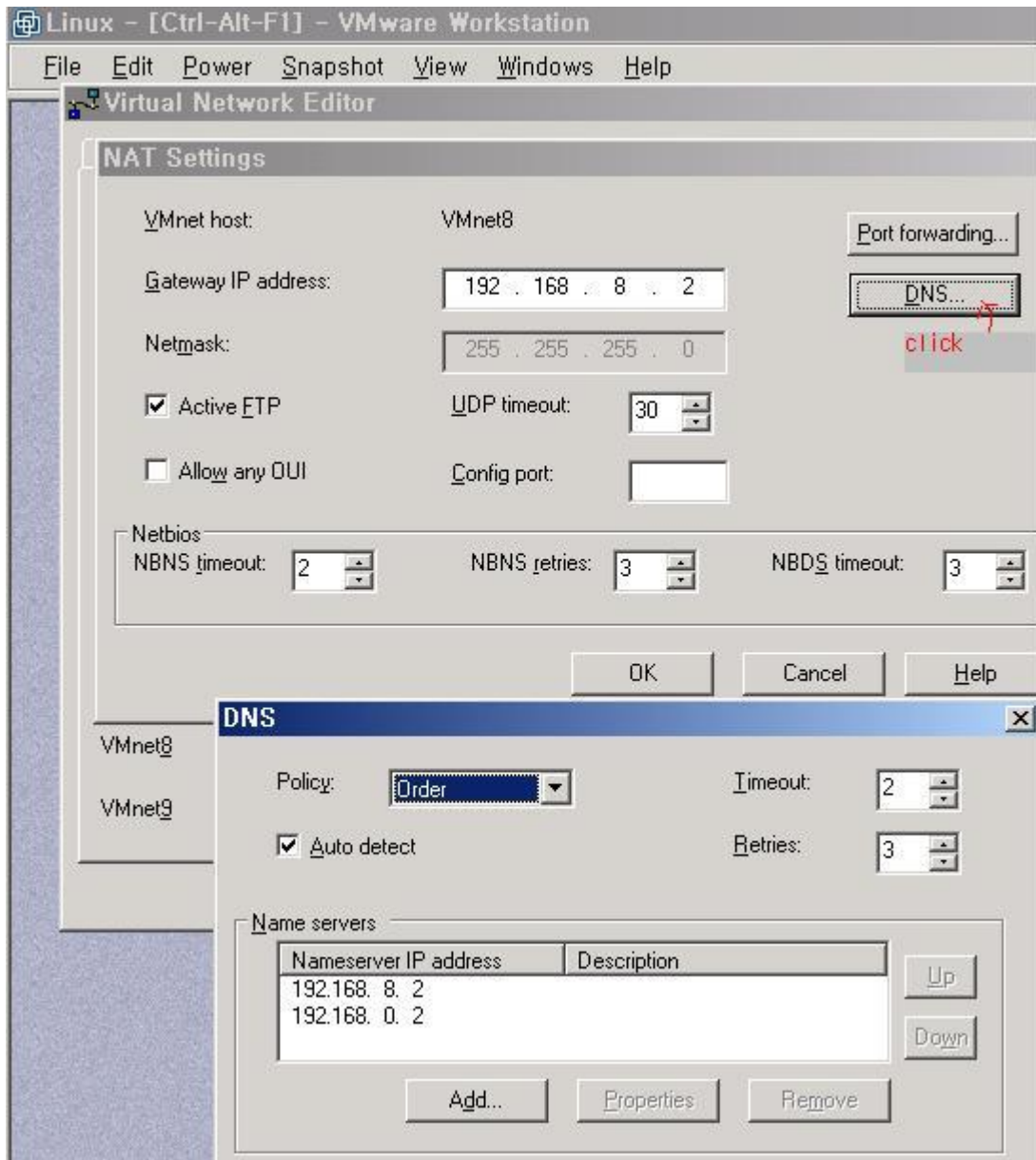


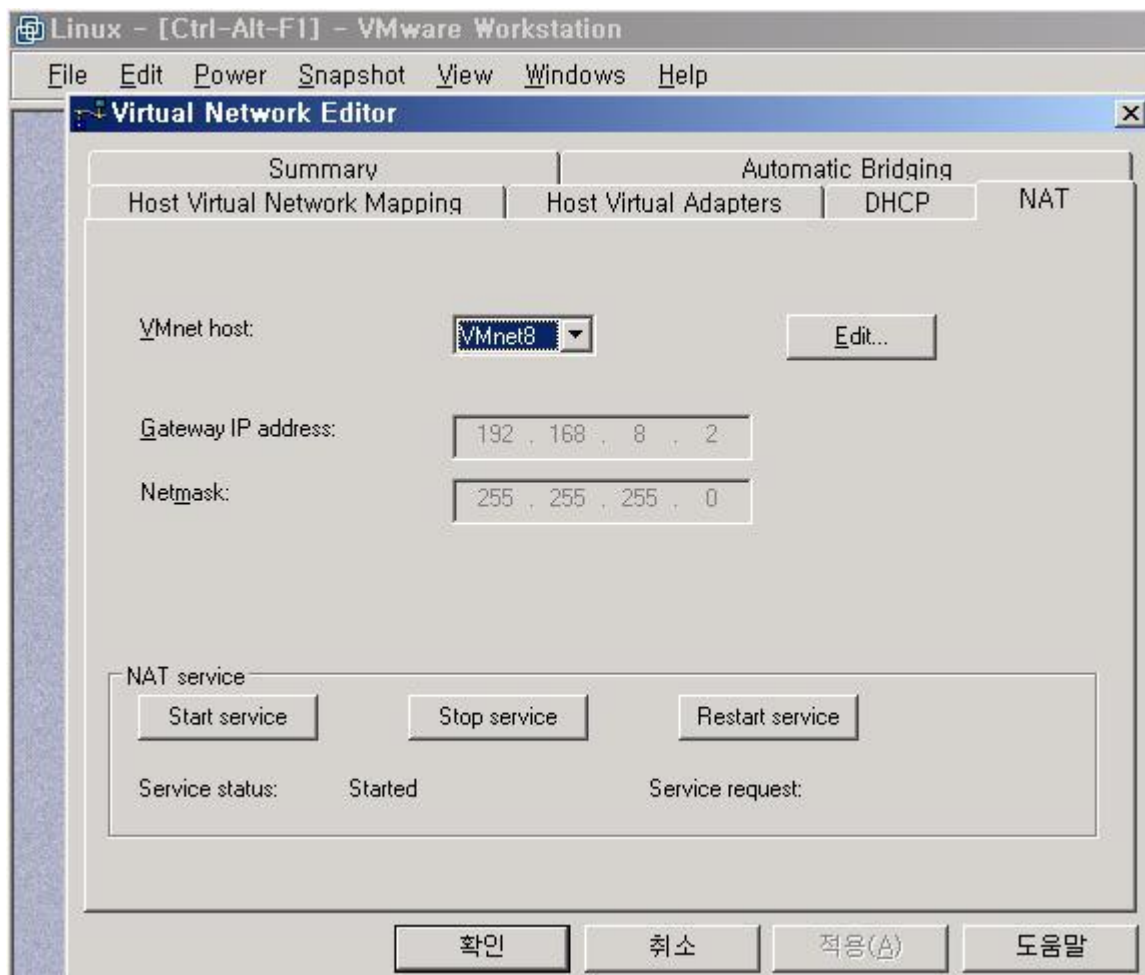
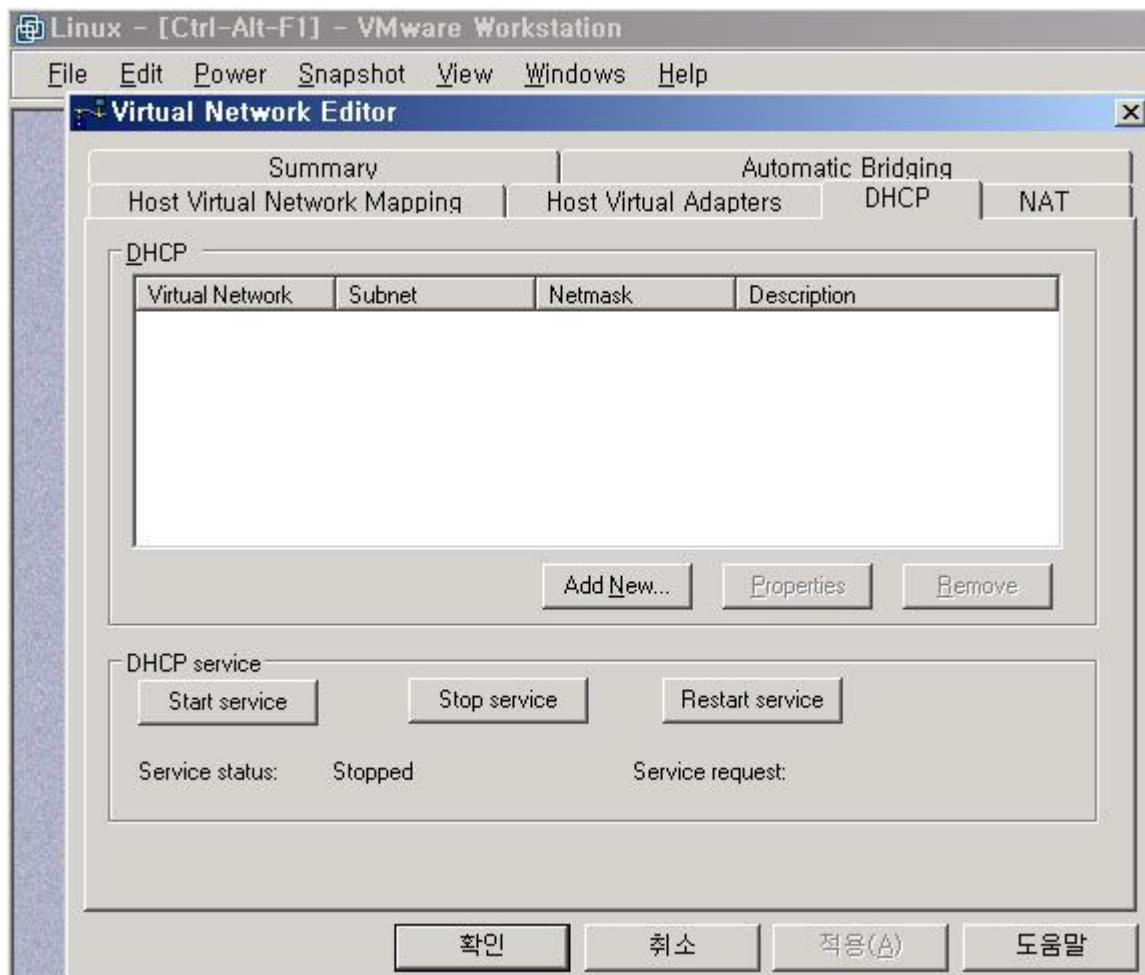
오직입니다. Vmware의 네트워크설정에 어려움을 겪고 계시는 분들을 위해 자세한 그림설명을 진행합니다.
 윈도우즈에서 VMware를 설치한후 게스트OS를 linux로 사용한것입니다.
 또한 고정아이피를 사용함으로써, 효율을 극대화 시킬수 있습니다.
 따라만 오십시오. DHCP는 사용하지 않습니다. 윈도우즈 NT계열이라면 관리도구 서비스항목중에 VMWARE DHCP를 사용안함으로 하셔도 됩니다.
 자료의 배포시에는 반드시 출처를 밝혀주십시오.
 시간이 남아돌아서 하는 작업은 아닙니다. 충분히 공감하시리라 생각합니다.

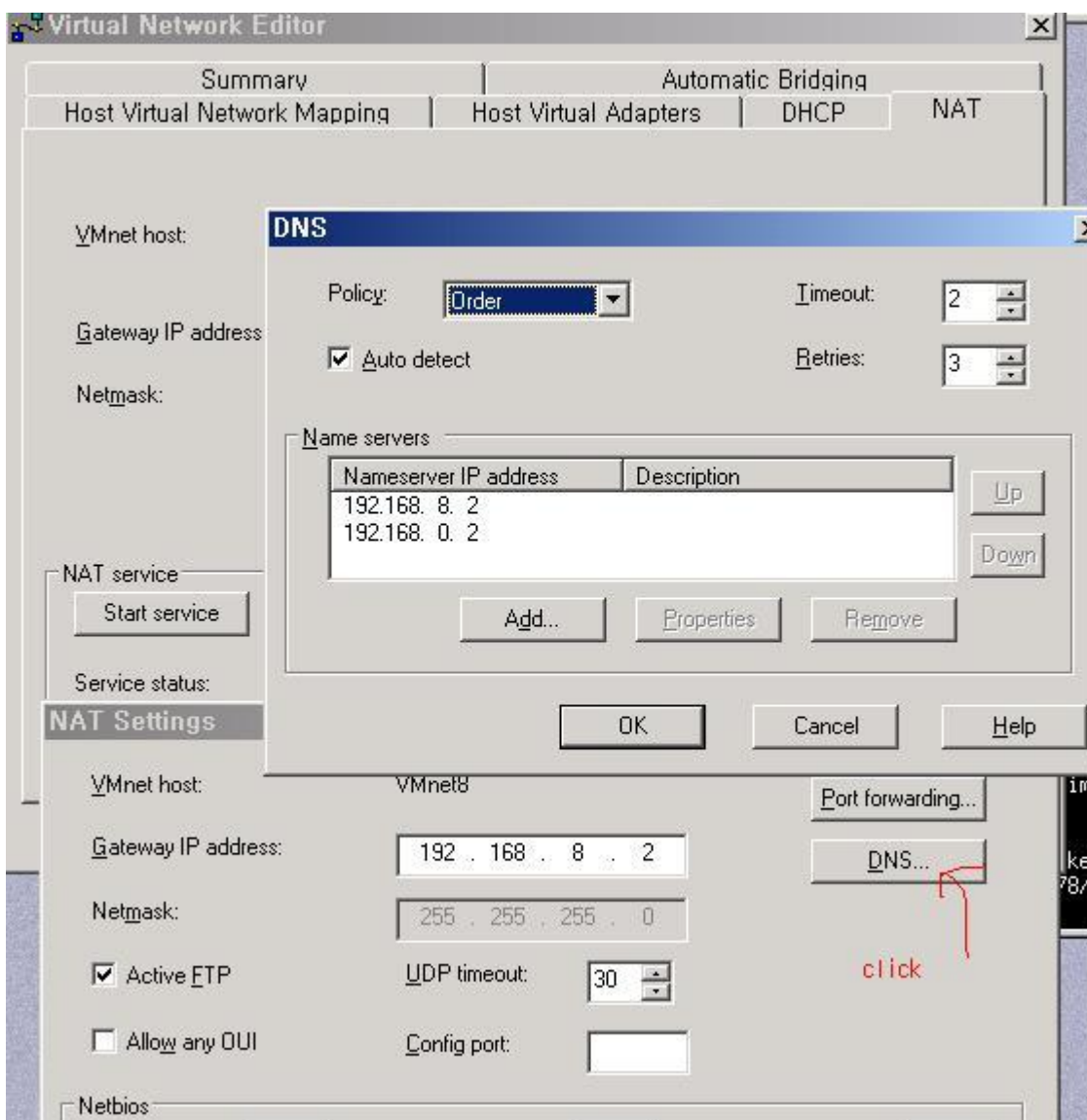
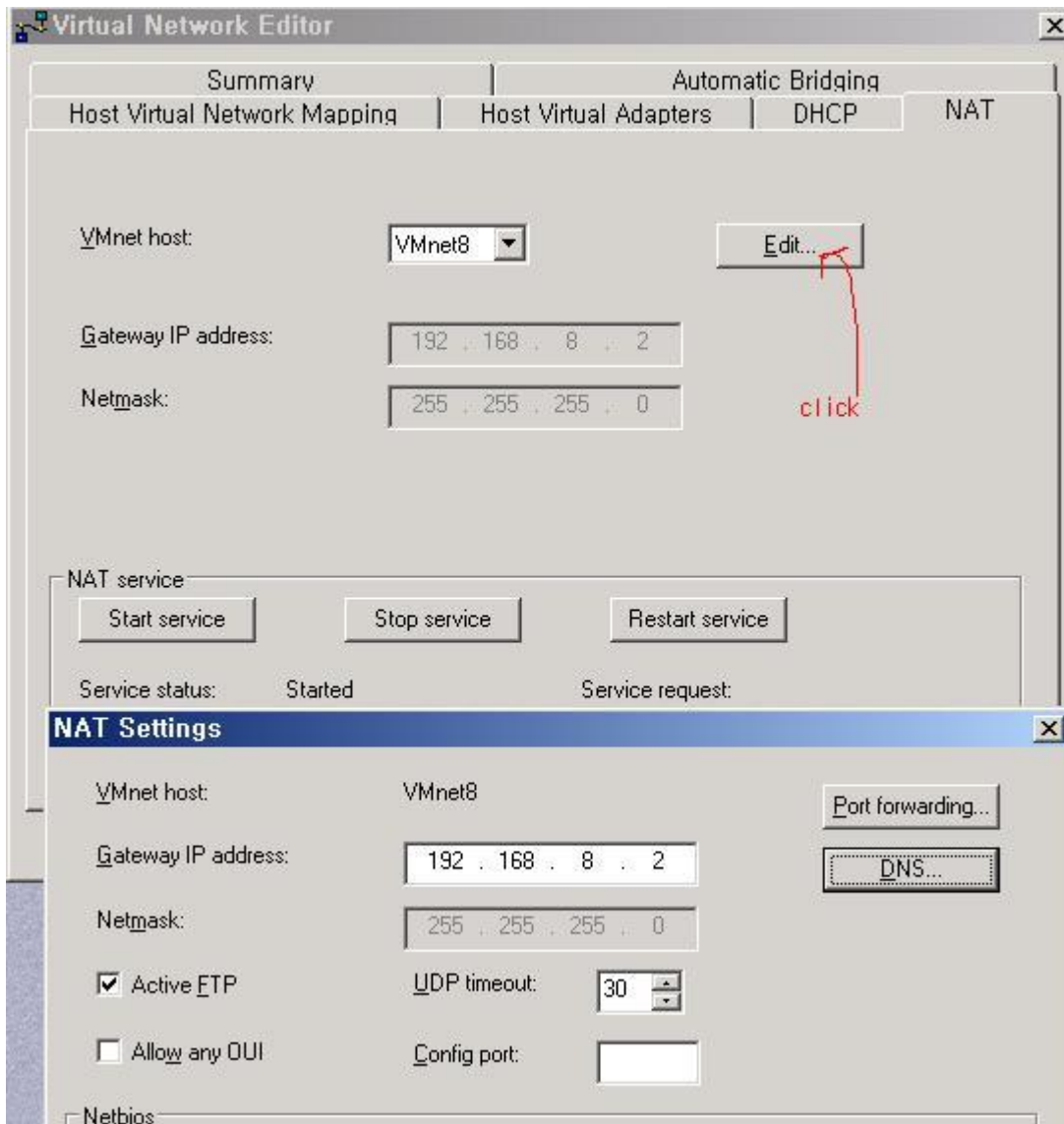




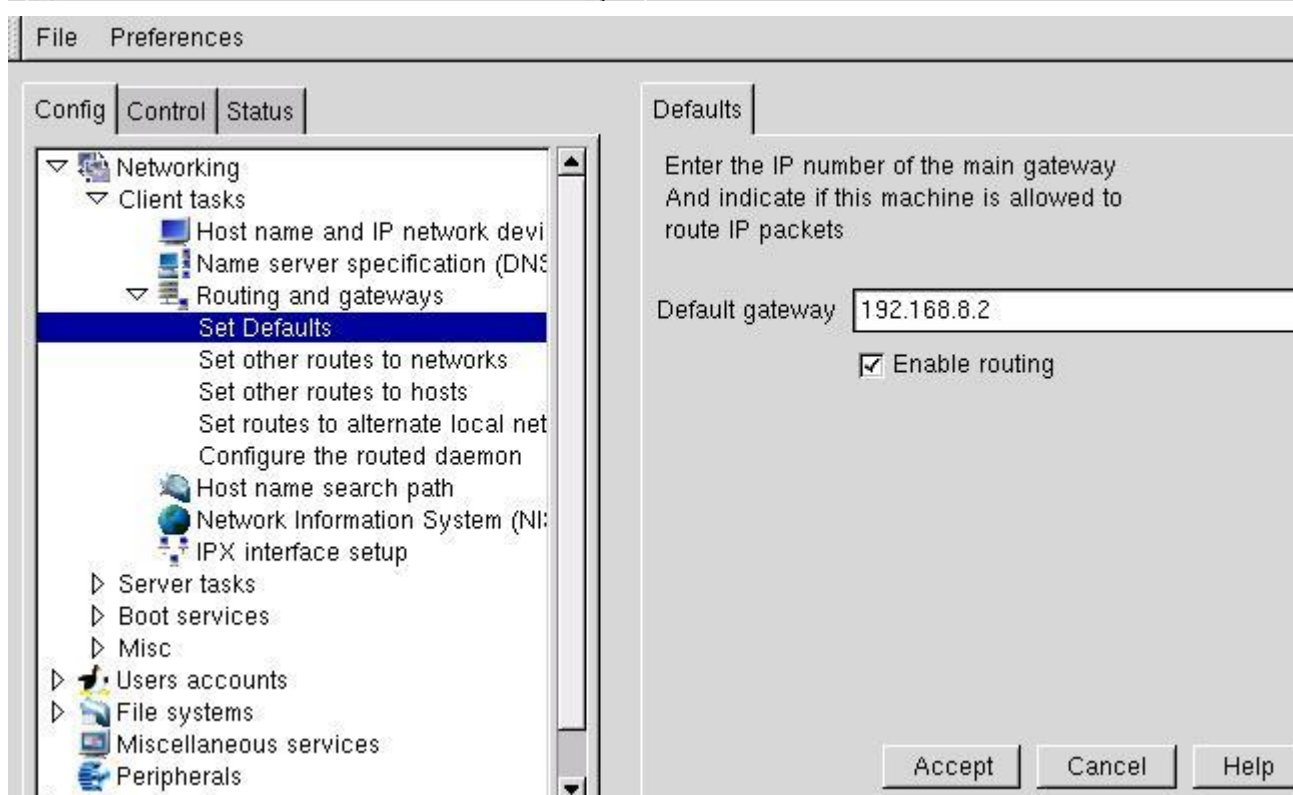
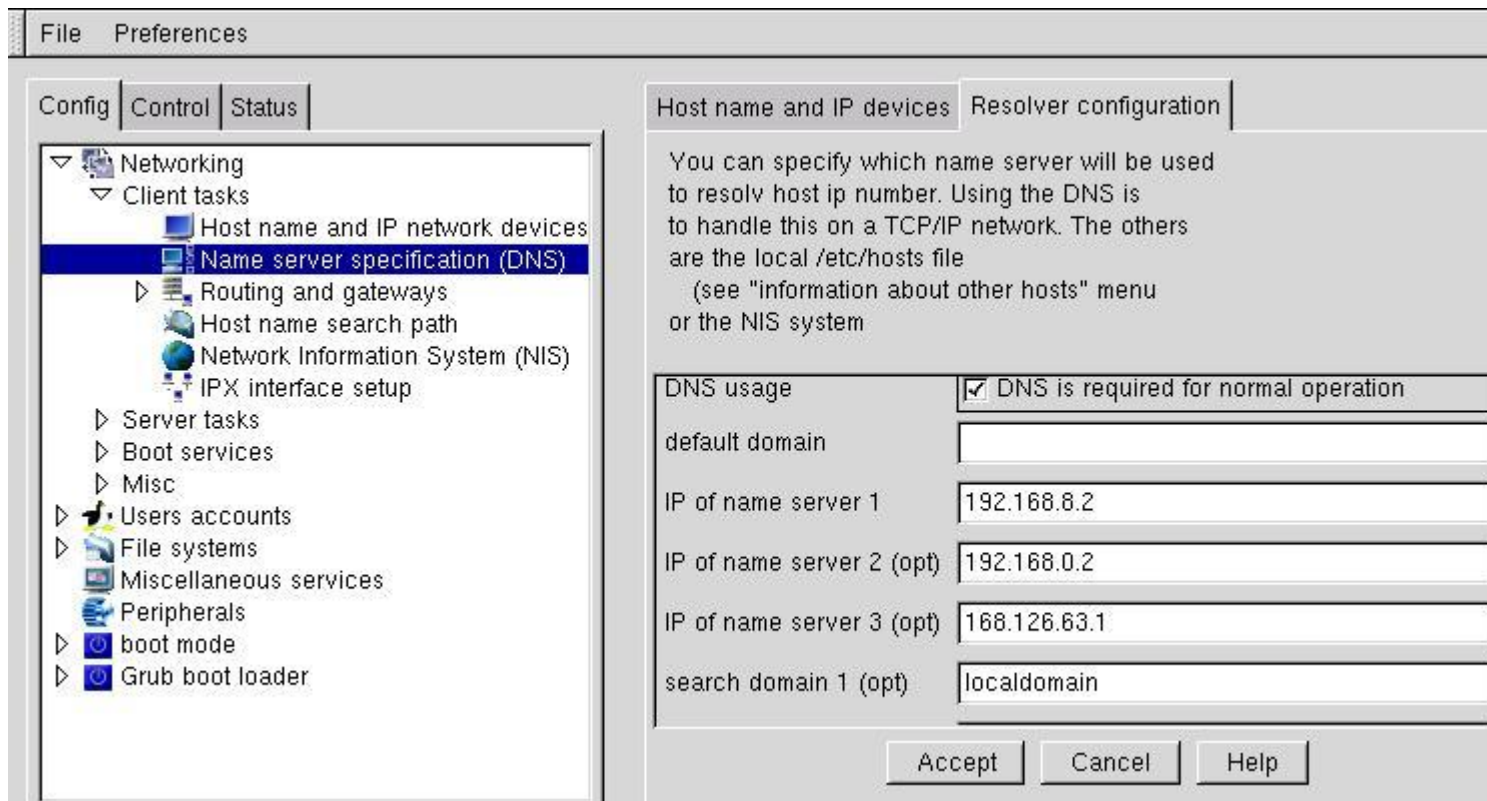
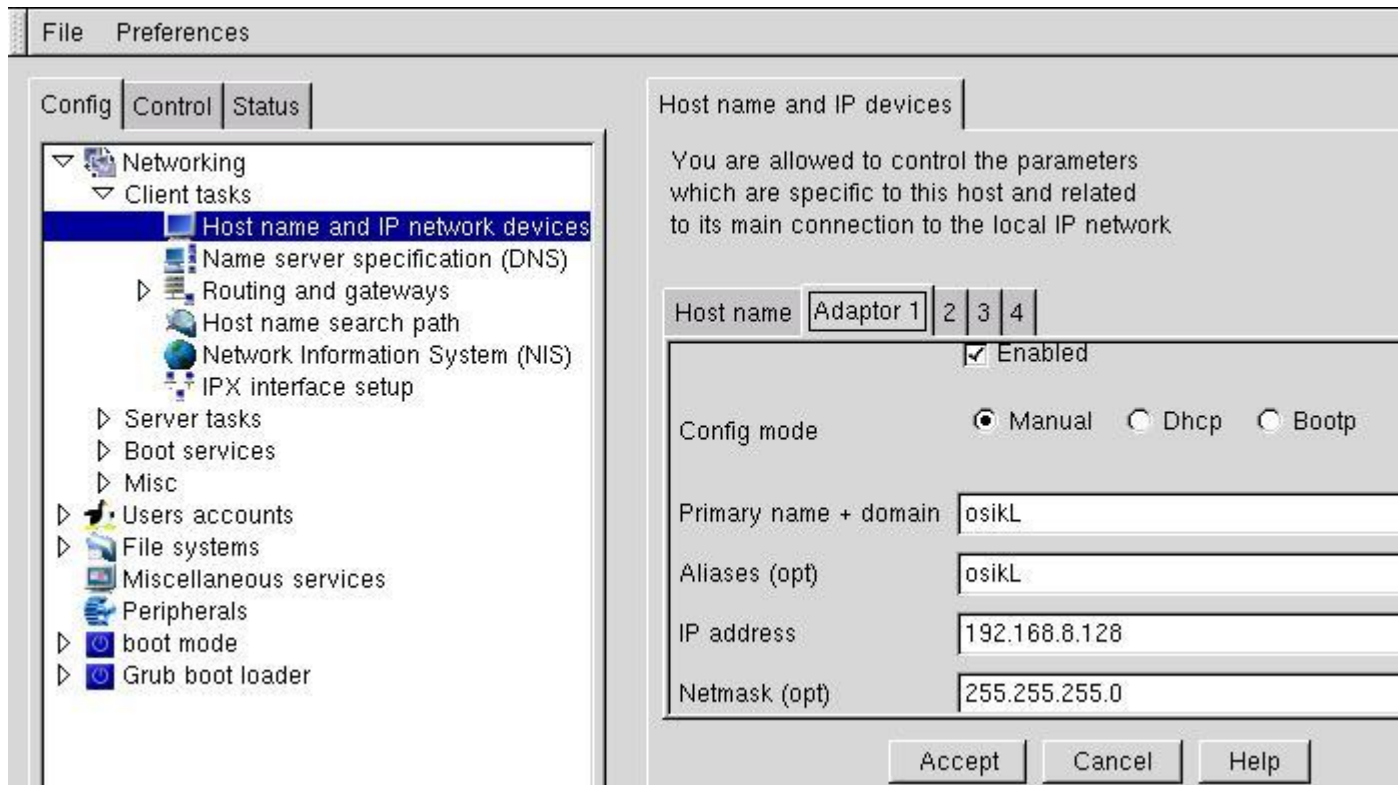


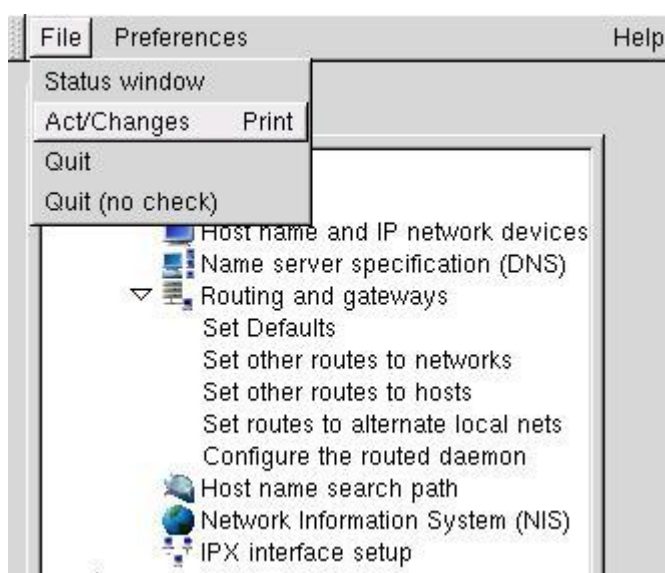
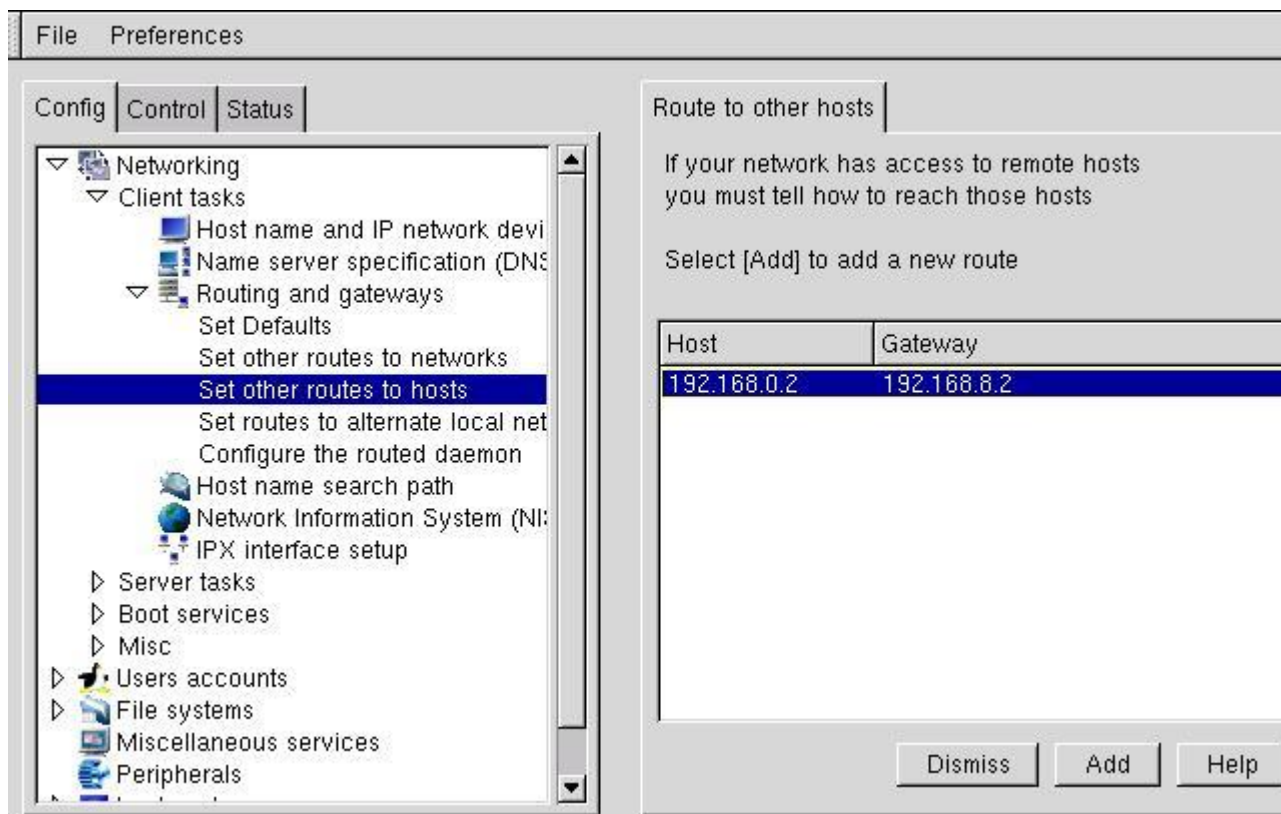






```
[root@osik1 /root]# linuxconf
```



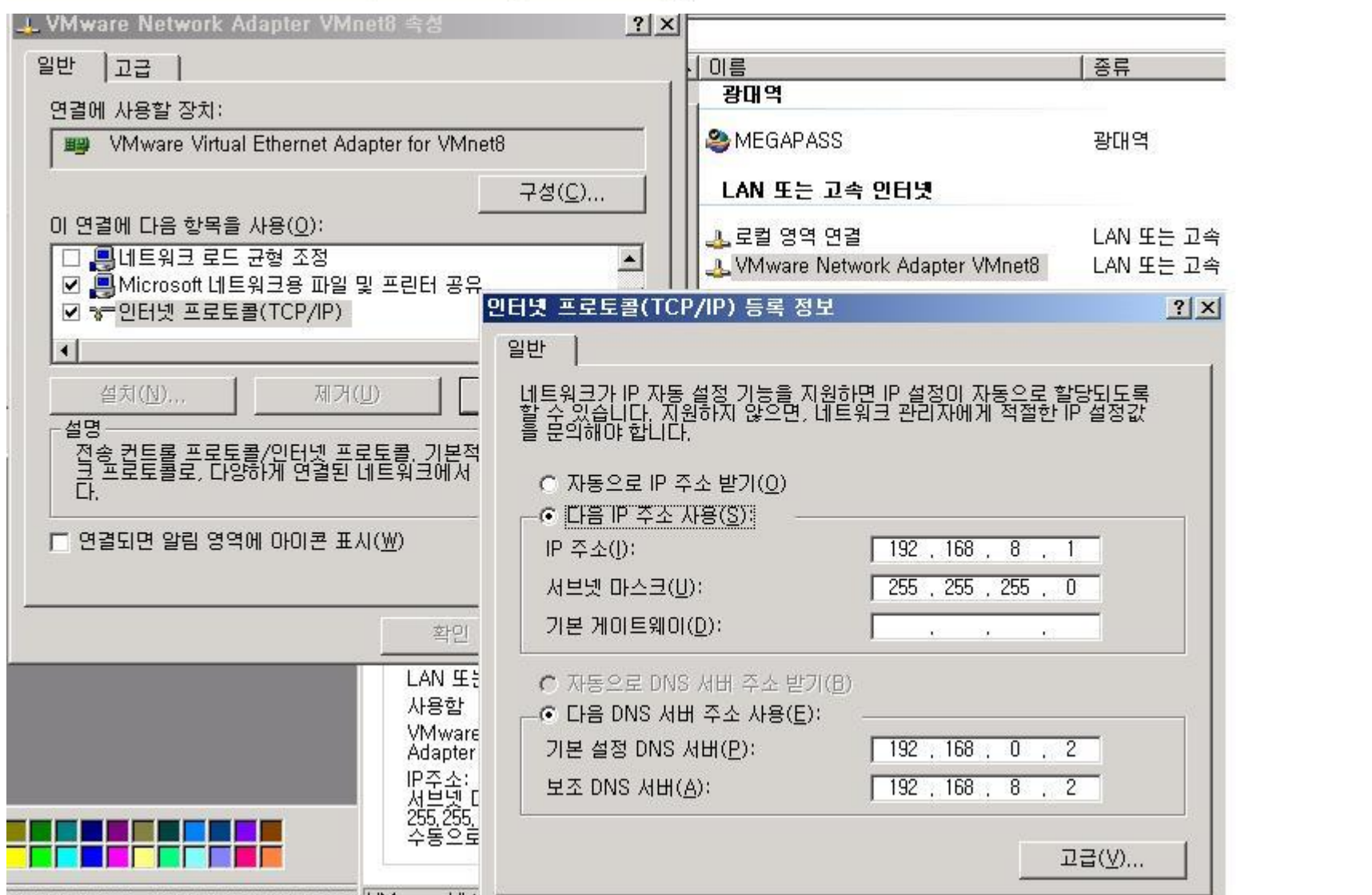
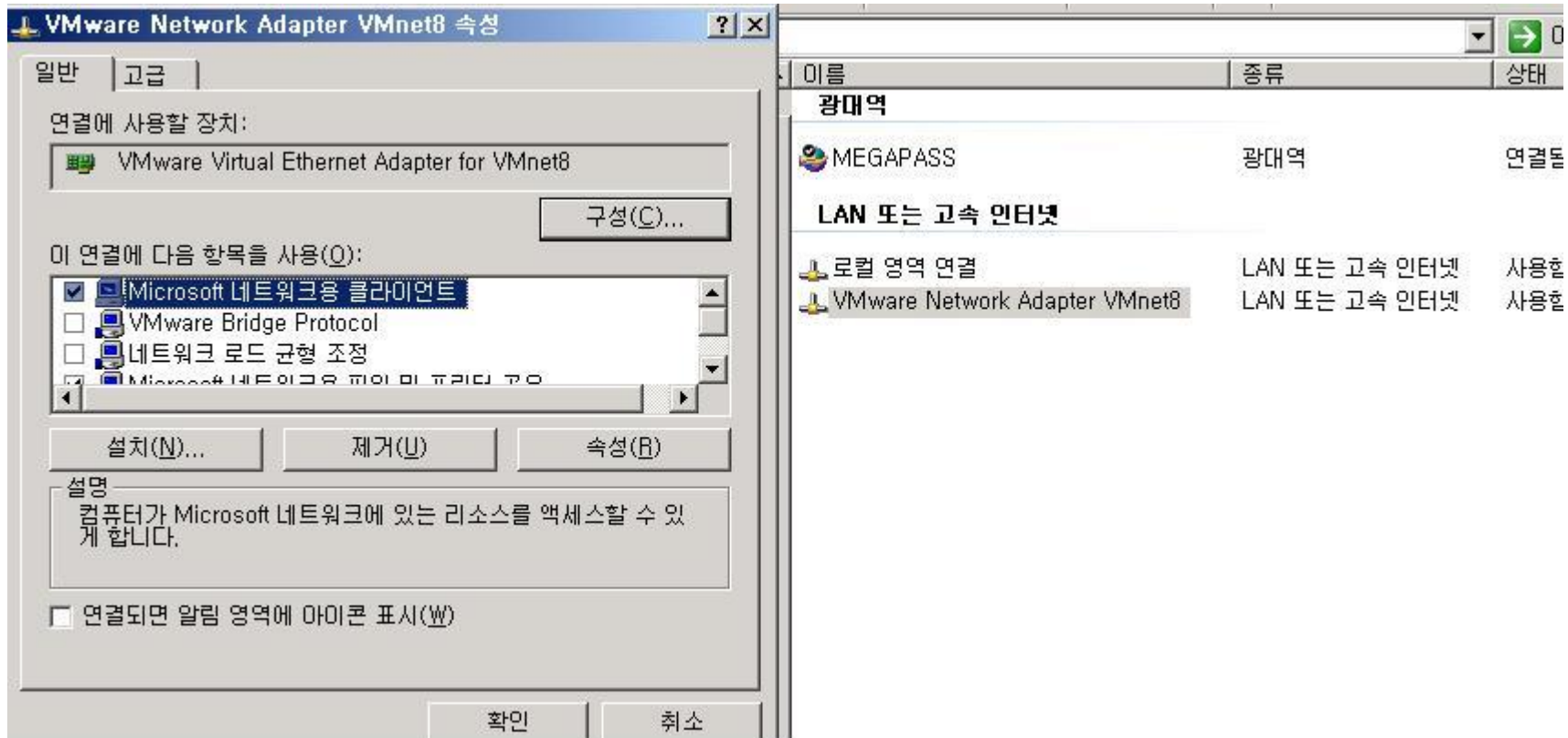


```
[root@osik1 /root]# route
Kernel IP routing table
Destination Gateway Genmask Flags Metric Ref Use Iface
osik.mshome.net 192.168.8.2 255.255.255.255 UGH 0 0 0 eth0
192.168.8.0 * 255.255.255.0 U 0 0 0 eth0
127.0.0.0 * 255.0.0.0 U 0 0 0 lo
default 192.168.8.2 0.0.0.0 UG 0 0 0 eth0
[root@osik1 /root]#
```

```
[root@osik1 /root]# ping osik
PING osik (192.168.0.2) from 192.168.8.128 : 56(84) bytes of data.
Warning: time of day goes back, taking countermeasures.
64 bytes from osik.mshome.net (192.168.0.2): icmp_seq=0 ttl=128 time=5.947 msec
64 bytes from osik.mshome.net (192.168.0.2): icmp_seq=1 ttl=128 time=867 usec
64 bytes from osik.mshome.net (192.168.0.2): icmp_seq=2 ttl=128 time=848 usec

--- osik ping statistics ---
3 packets transmitted, 3 packets received, 0% packet loss
round-trip min/avg/max/mdev = 0.848/2.554/5.947/2.399 ms
[root@osik1 /root]# ping empas.com
PING empas.com (211.115.211.8) from 192.168.8.128 : 56(84) bytes of data.
64 bytes from 211.115.211.8: icmp_seq=0 ttl=128 time=20.553 msec
64 bytes from 211.115.211.8: icmp_seq=1 ttl=128 time=21.424 msec
64 bytes from 211.115.211.8: icmp_seq=2 ttl=128 time=19.380 msec

--- empas.com ping statistics ---
3 packets transmitted, 3 packets received, 0% packet loss
round-trip min/avg/max/mdev = 19.380/20.452/21.424/0.845 ms
[root@osik1 /root]#
```

여기서 DNS 192.168.0.2는 그림상 로컬영역연결 항목의 내부IP 즉, 사설IP를 가리킵니다.

```
E:\>ping osikL

Pinging osikL [192.168.8.128] with 32 bytes of data:

Reply from 192.168.8.128: bytes=32 time=3ms TTL=255
Reply from 192.168.8.128: bytes=32 time<1ms TTL=255
Reply from 192.168.8.128: bytes=32 time=9ms TTL=255
Reply from 192.168.8.128: bytes=32 time<1ms TTL=255

Ping statistics for 192.168.8.128:
    Packets: Sent = 4, Received = 4, Lost = 0 (0% loss),
Approximate round trip times in milli-seconds:
    Minimum = 0ms, Maximum = 9ms, Average = 3ms

E:\>ping empas.com

Pinging empas.com [211.115.211.8] with 32 bytes of data:

Reply from 211.115.211.8: bytes=32 time=21ms TTL=57
Reply from 211.115.211.8: bytes=32 time=23ms TTL=57
Reply from 211.115.211.8: bytes=32 time=23ms TTL=57
Reply from 211.115.211.8: bytes=32 time=23ms TTL=57

Ping statistics for 211.115.211.8:
    Packets: Sent = 4, Received = 4, Lost = 0 (0% loss),
Approximate round trip times in milli-seconds:
    Minimum = 21ms, Maximum = 23ms, Average = 22ms
```

직접보지 못하고 설정을 하시는데 어려움을 겪는 분들에게는
그림이 최고지요?

이 자료를 배포시에는 반드시 자료출처를 기록해주시요.