

# SOA 를 위한 IT기술과 경영기술

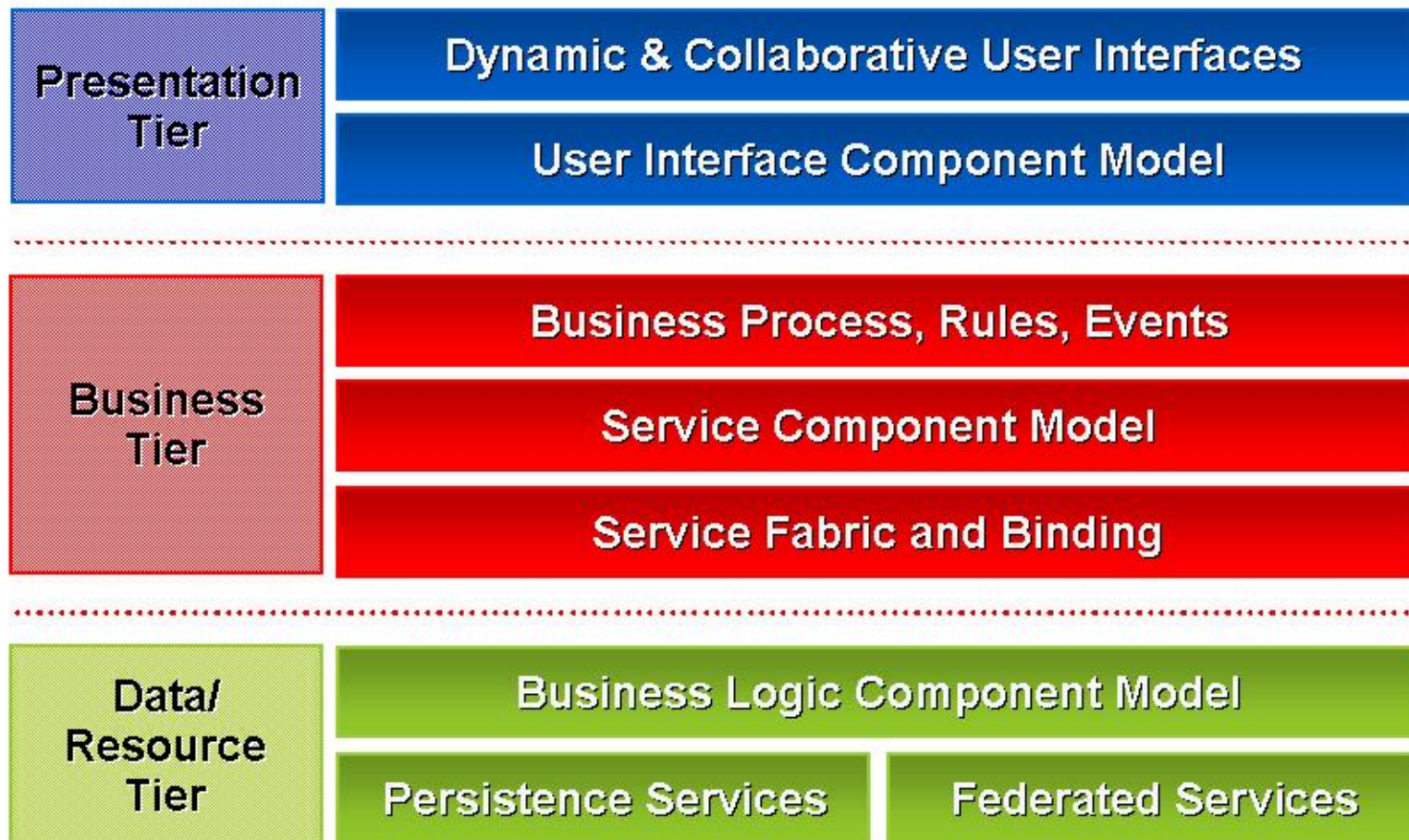
---

변종석  
SCA

# 목 차

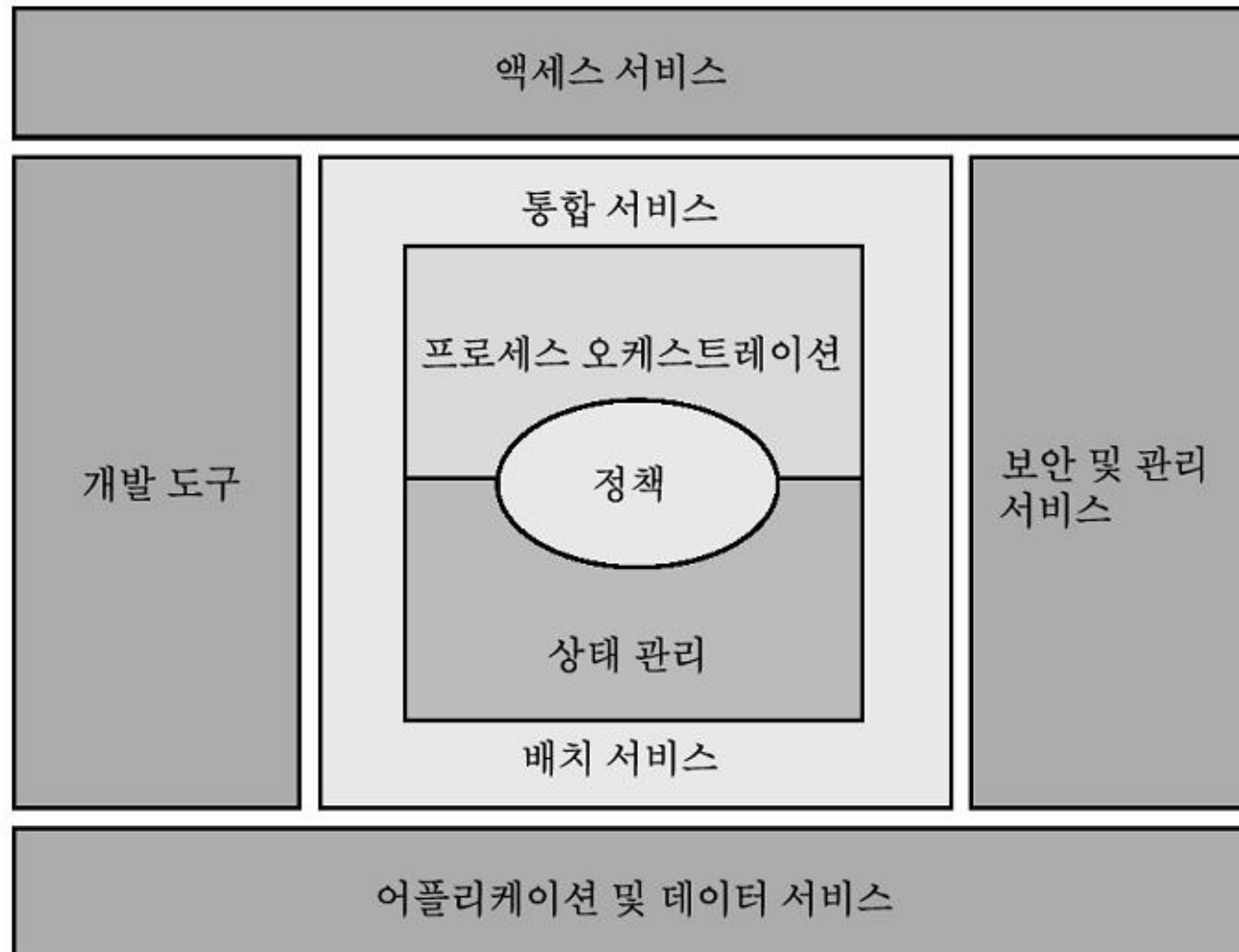
- 1. SOA**
- 2. SOA & IT**
- 3. SOA & IT & 경영**
- 4. Business Process**
- 5. Business Process Lifecycle**

# The Next Application Platform



# SOA

# SOA Model



IDC 2005 SOA Platform Reference Model

# SOA Level

## LEVEL 5 SOA

### STRATEGIC GOALS

SOA Industrialized - Able to Support Business Initiatives in a Timely and Cost-Effective Manner

SOA Quantatively Managed Monitoring Business Processes for Business Process Optimization

SOA Focused on Business Process Automation and Improvement

SOA Applied to Existing Projects Portfolio

SOA Focused on Simple Quick Win Projects

### TACTICAL PLANS

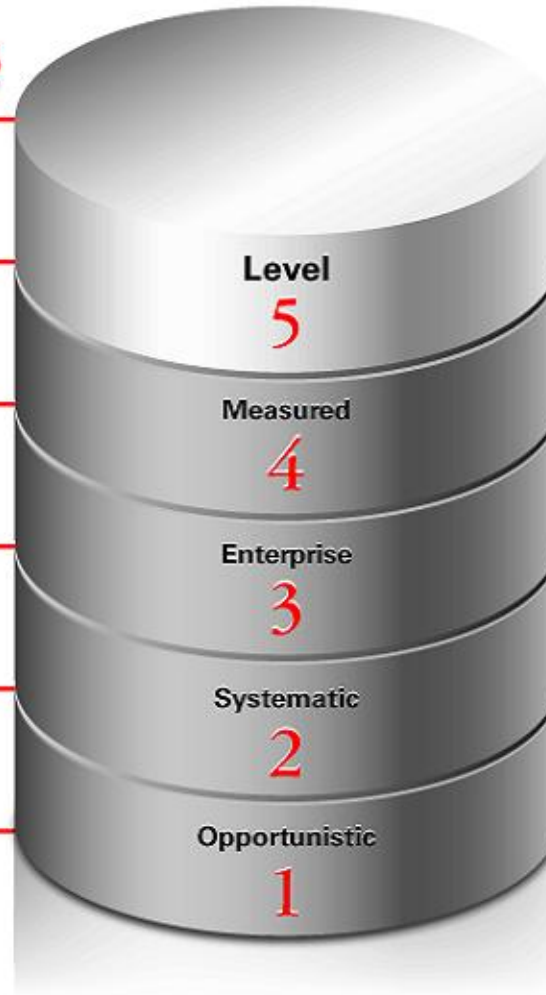
- Deploy Event-Driven Technologies, such as CEP, to Enable Automated Self-Optimizing Applications

- Deploy BAM, BPEL and BPM to Baseline, Improve, Measure and Report on Processes  
- Process Owners Driving Business Process Optimization  
- Measure and Improve Service Reuse

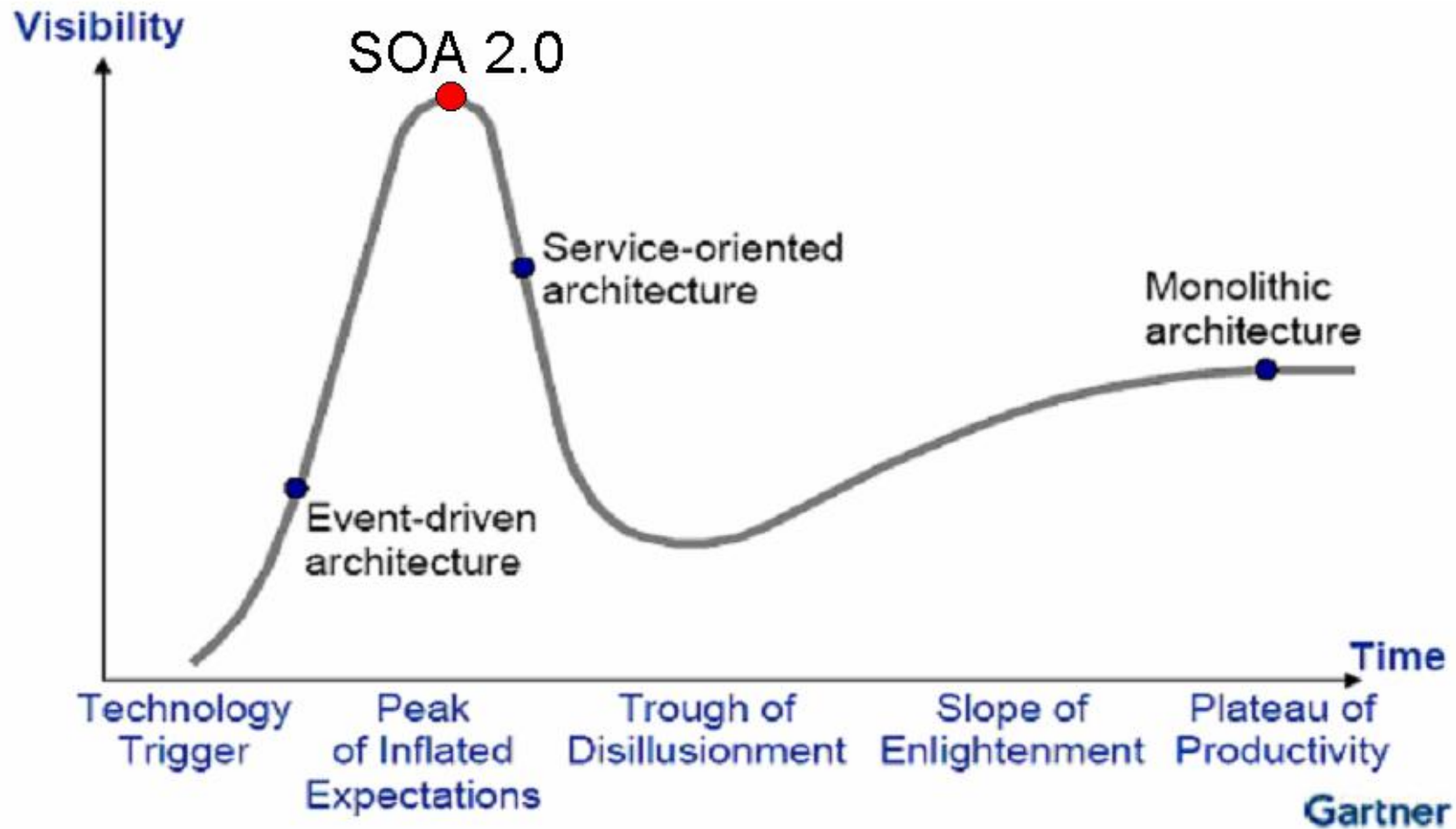
- Layer Orchestration and BPM onto Services  
- Enterprise Architecture Group Starts Driving Enterprise SOA Adoption

- Apply SOA to Simple Integration Projects  
- Deploy Service Management  
- Focus on Standards  
- Initial SOA Planning

- Get Experience Building, Deploying and Consuming Service



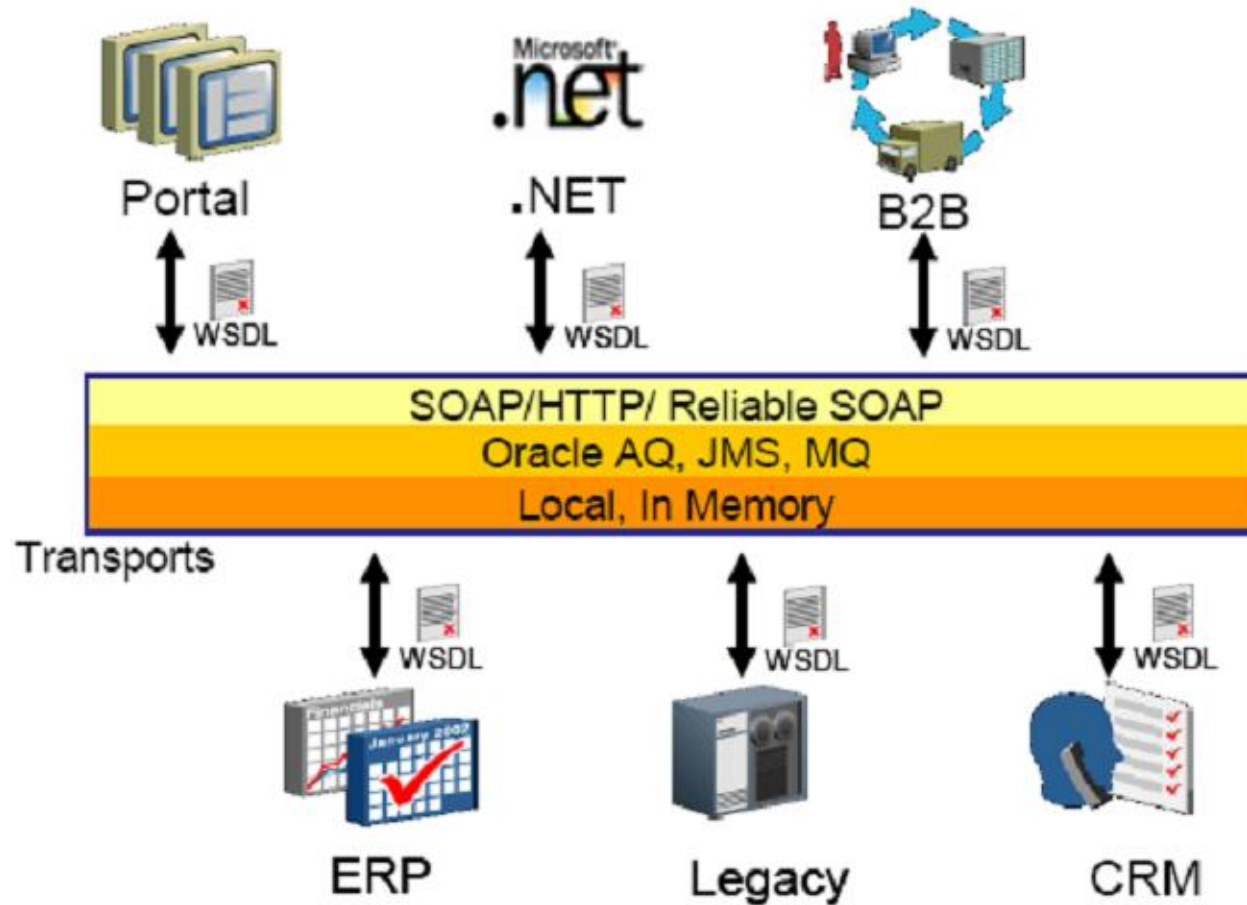
# SOA 2.0



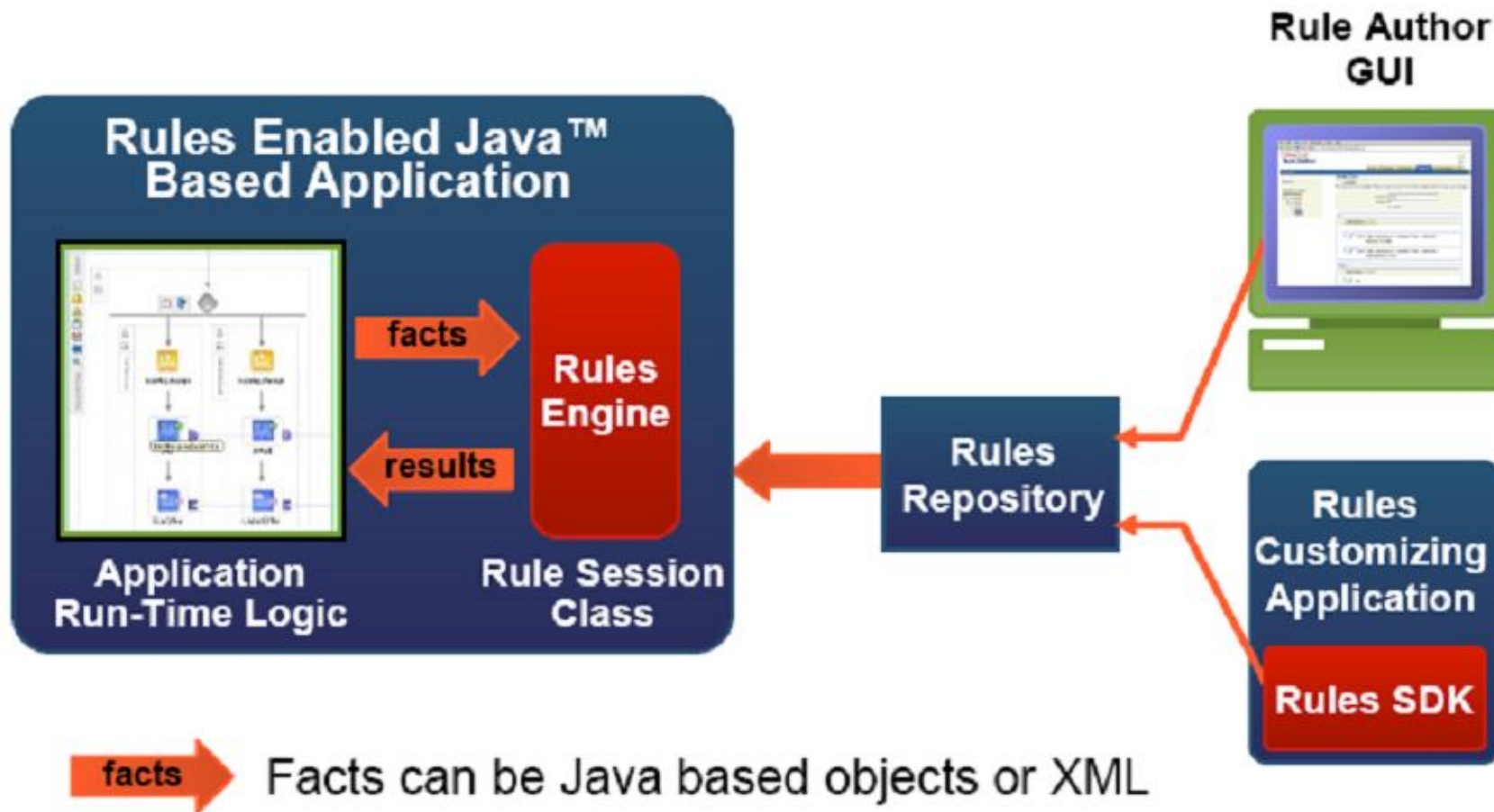
# SOA & IT



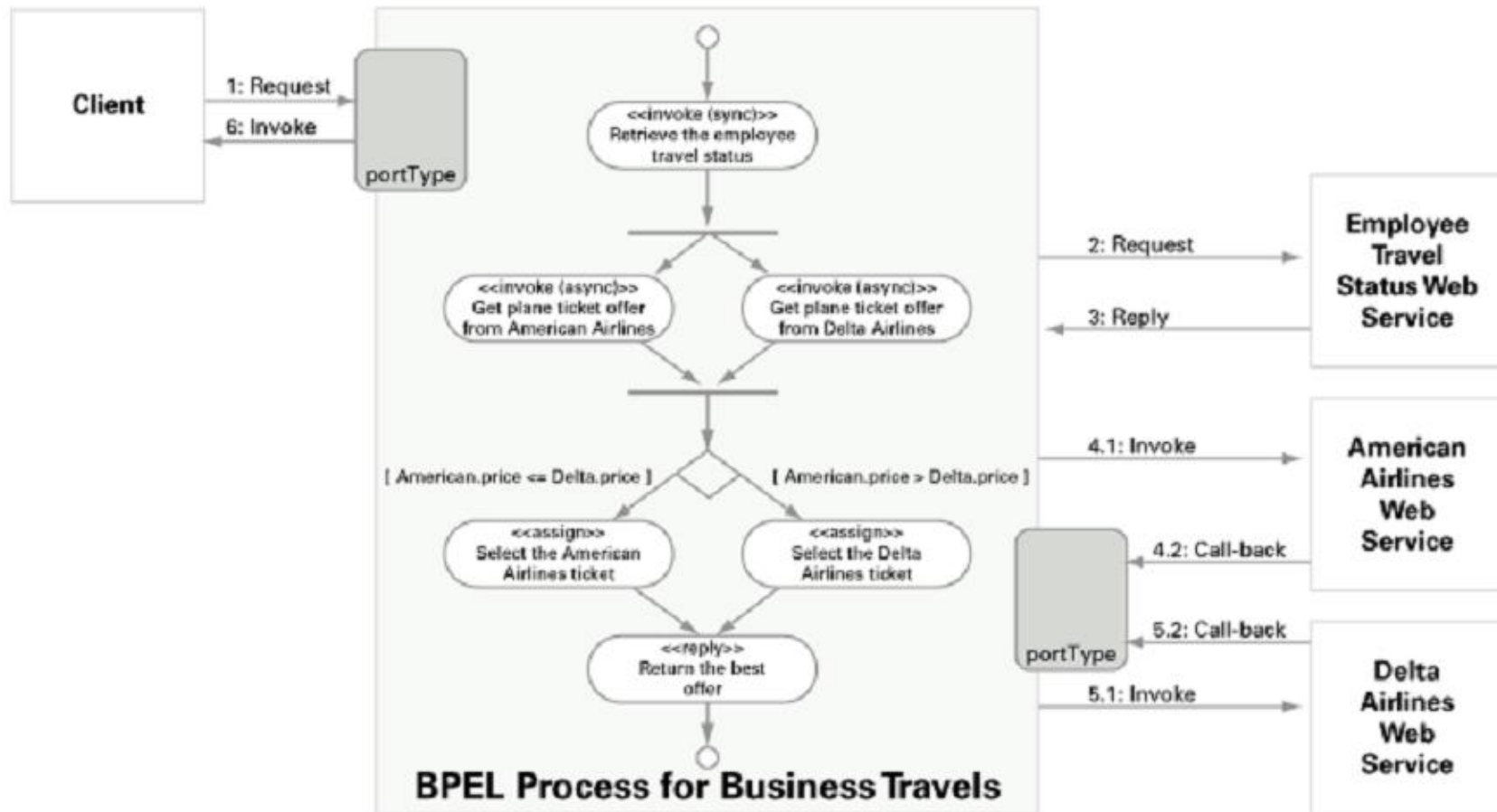
# ESB



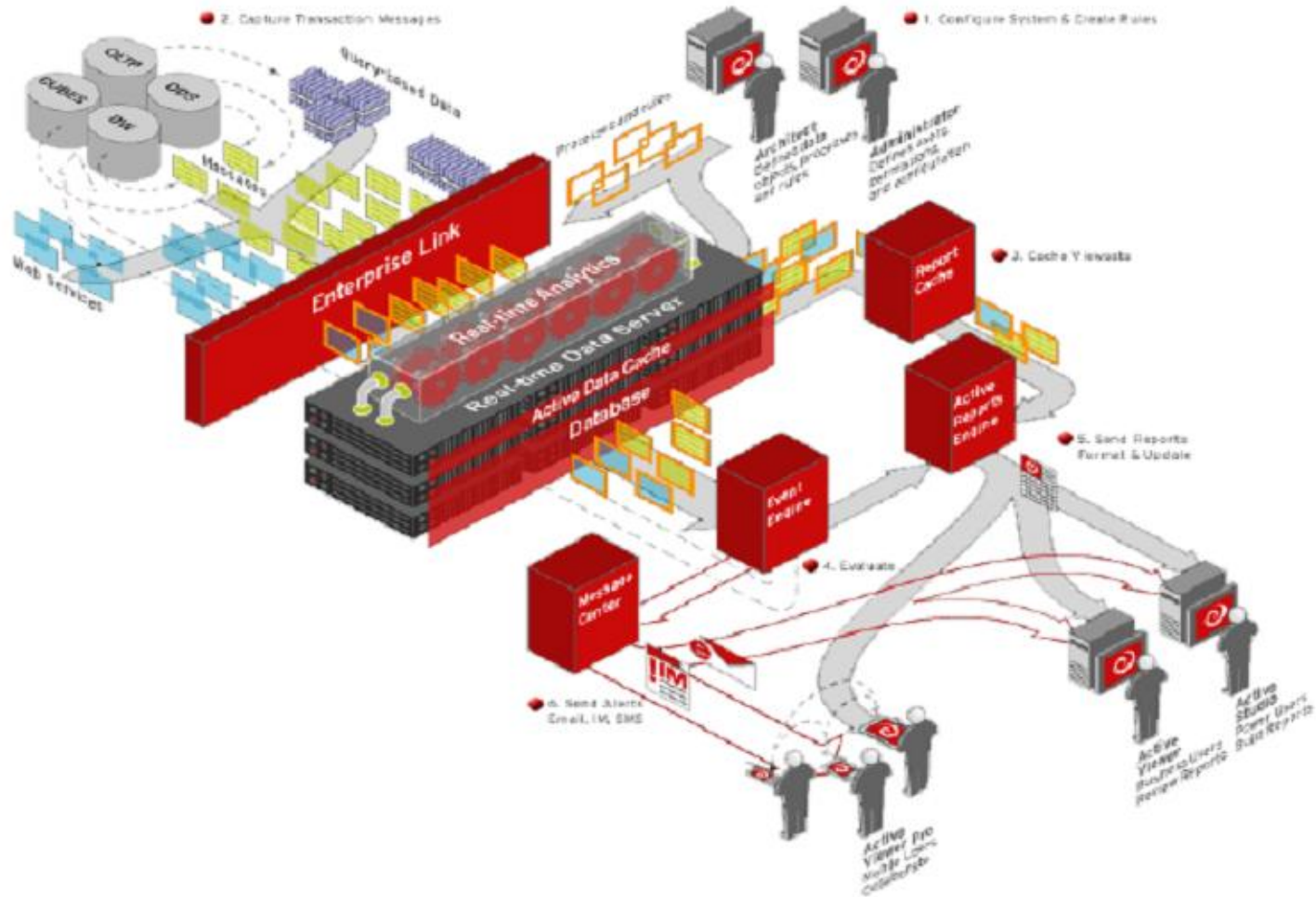
# BRE



# BPEL



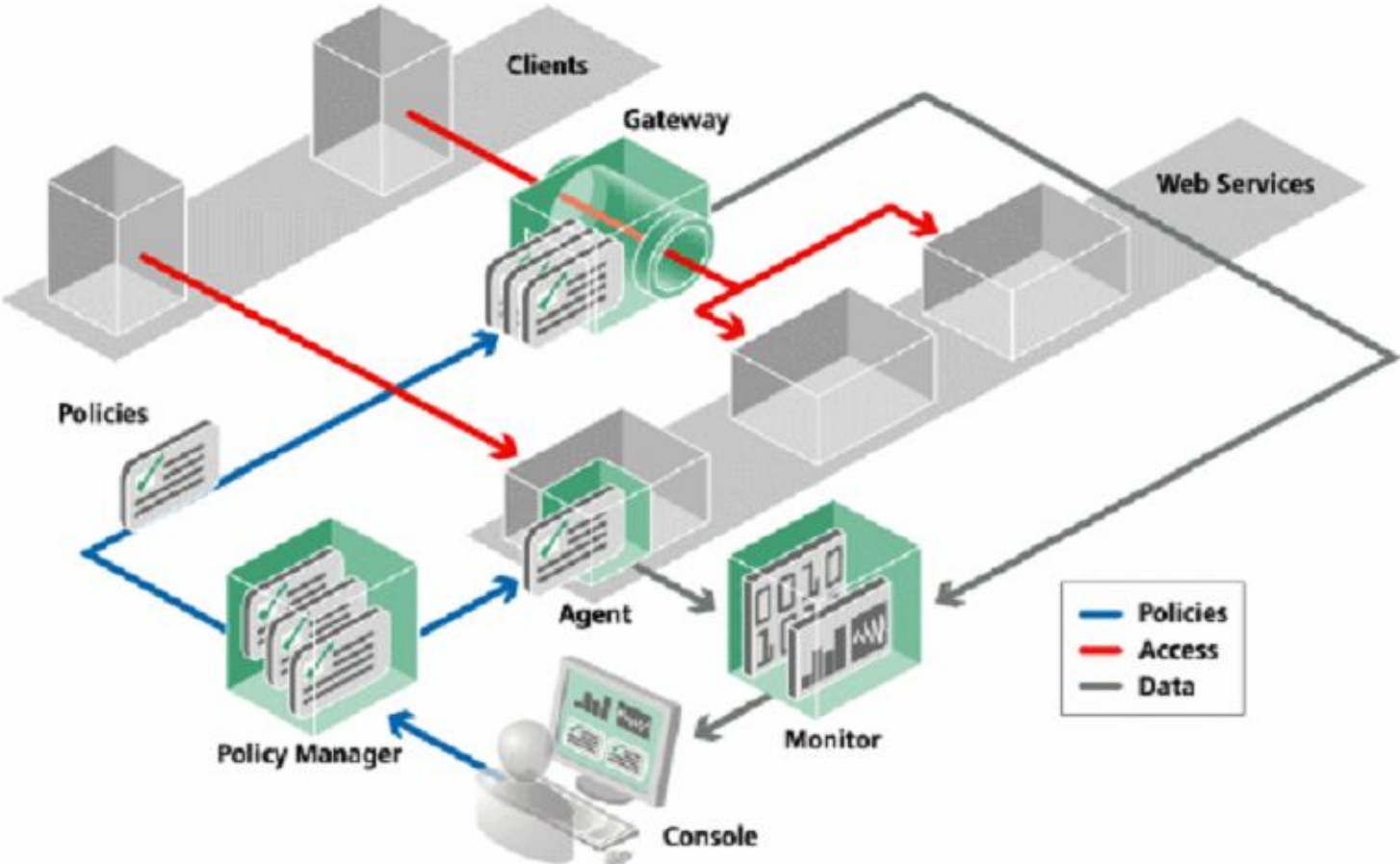
# BAM



# Web Service



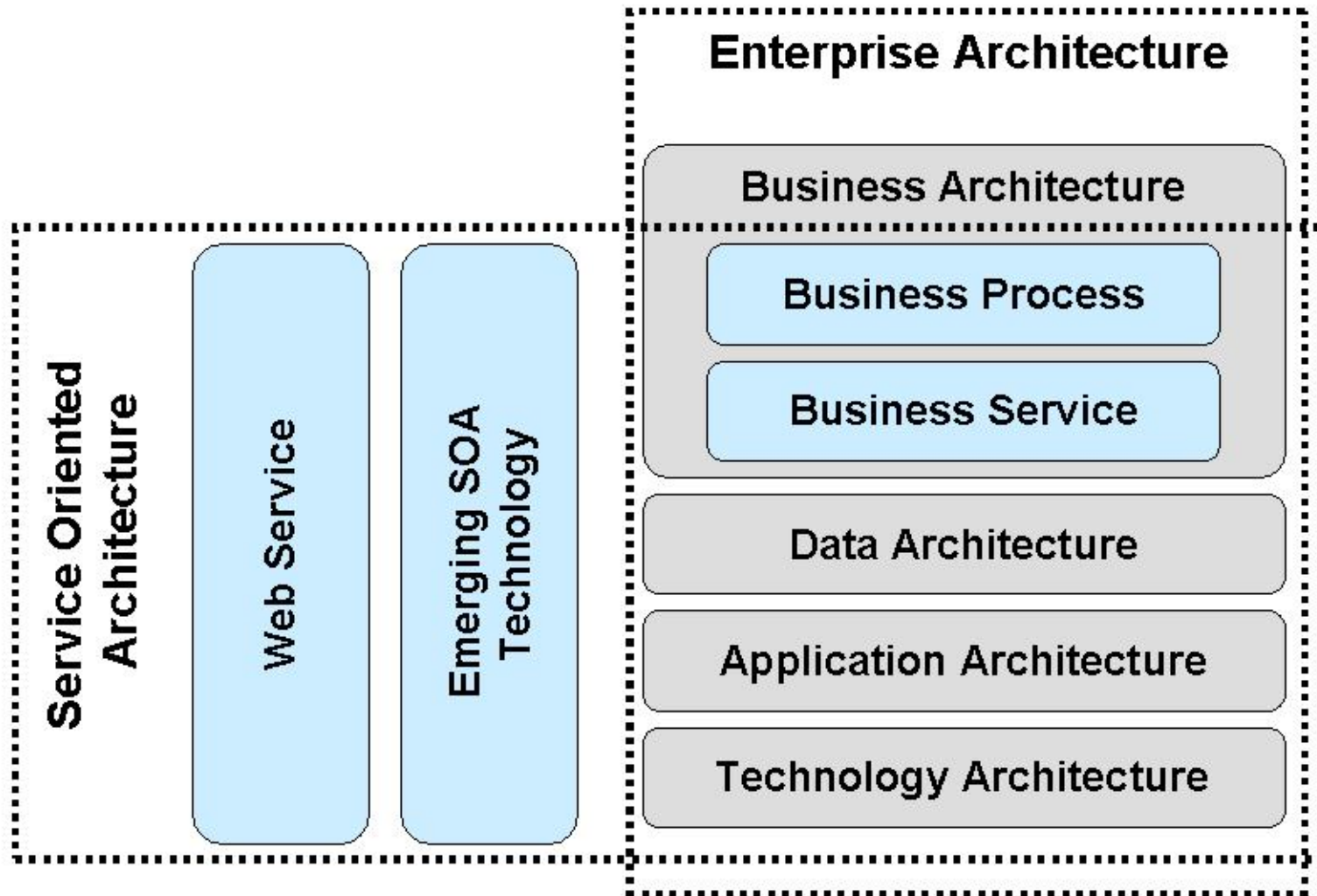
# WSM



# SOA & IT & 경영



# EA & SOA

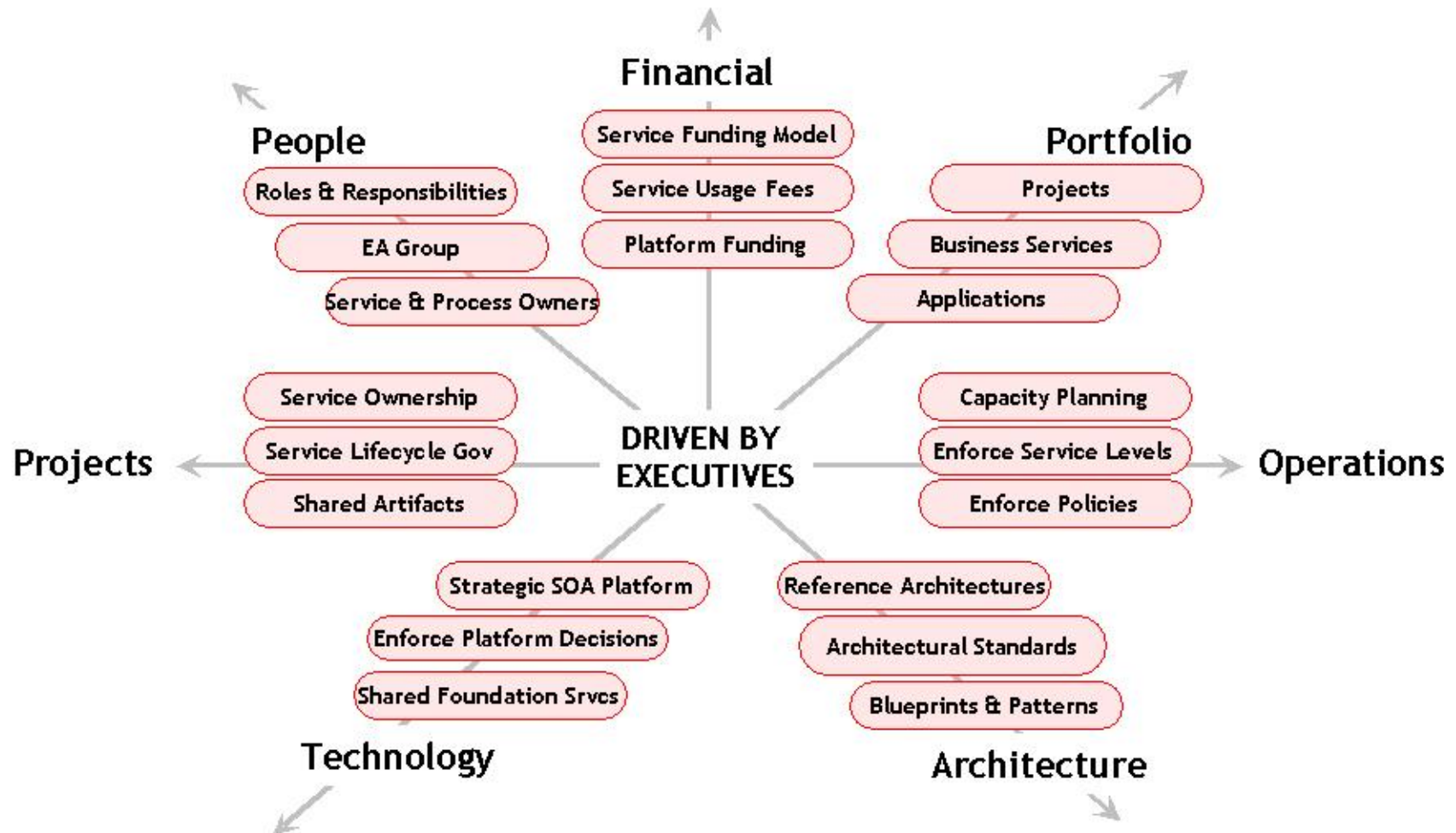




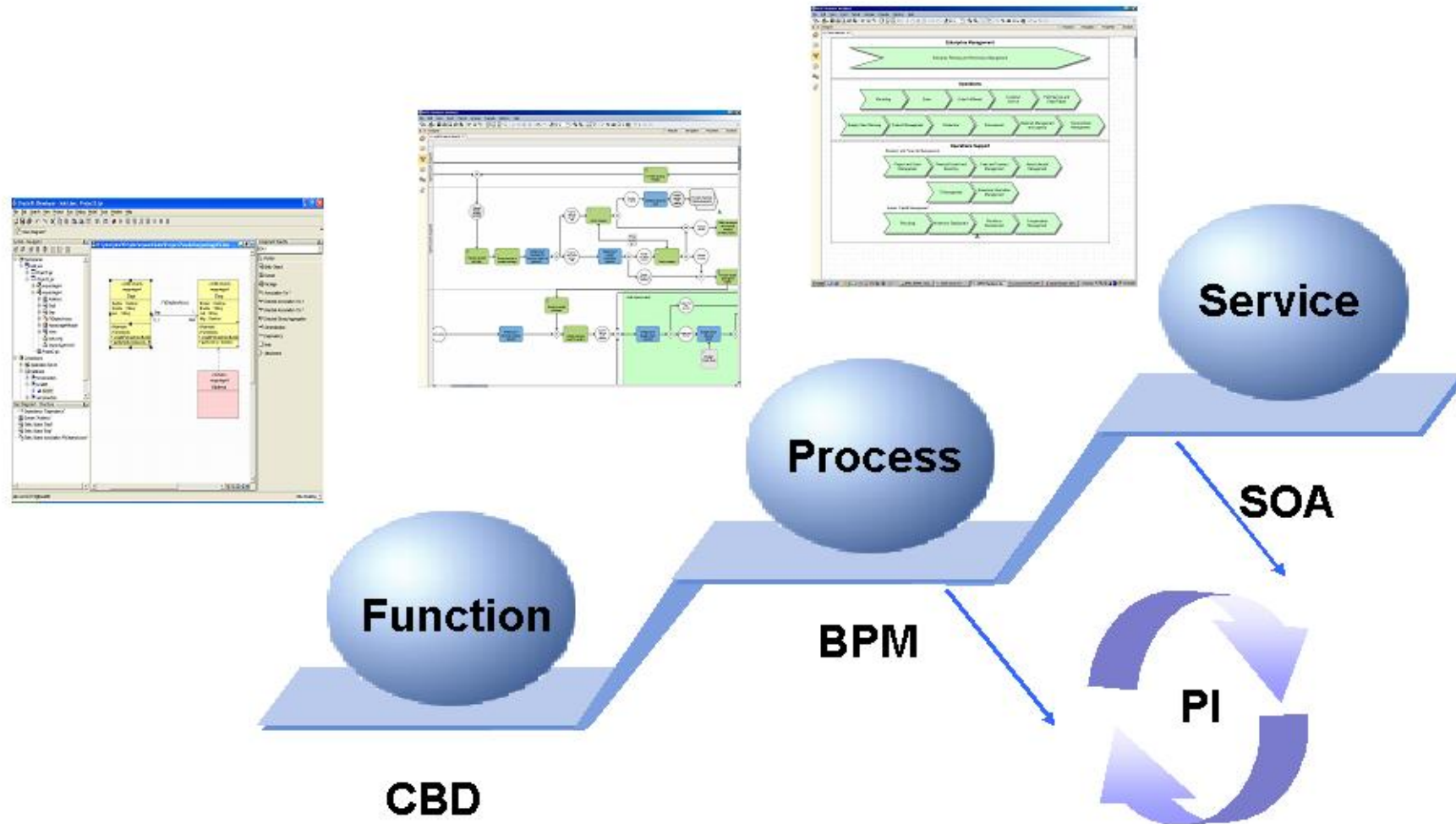
# Governance & SOA



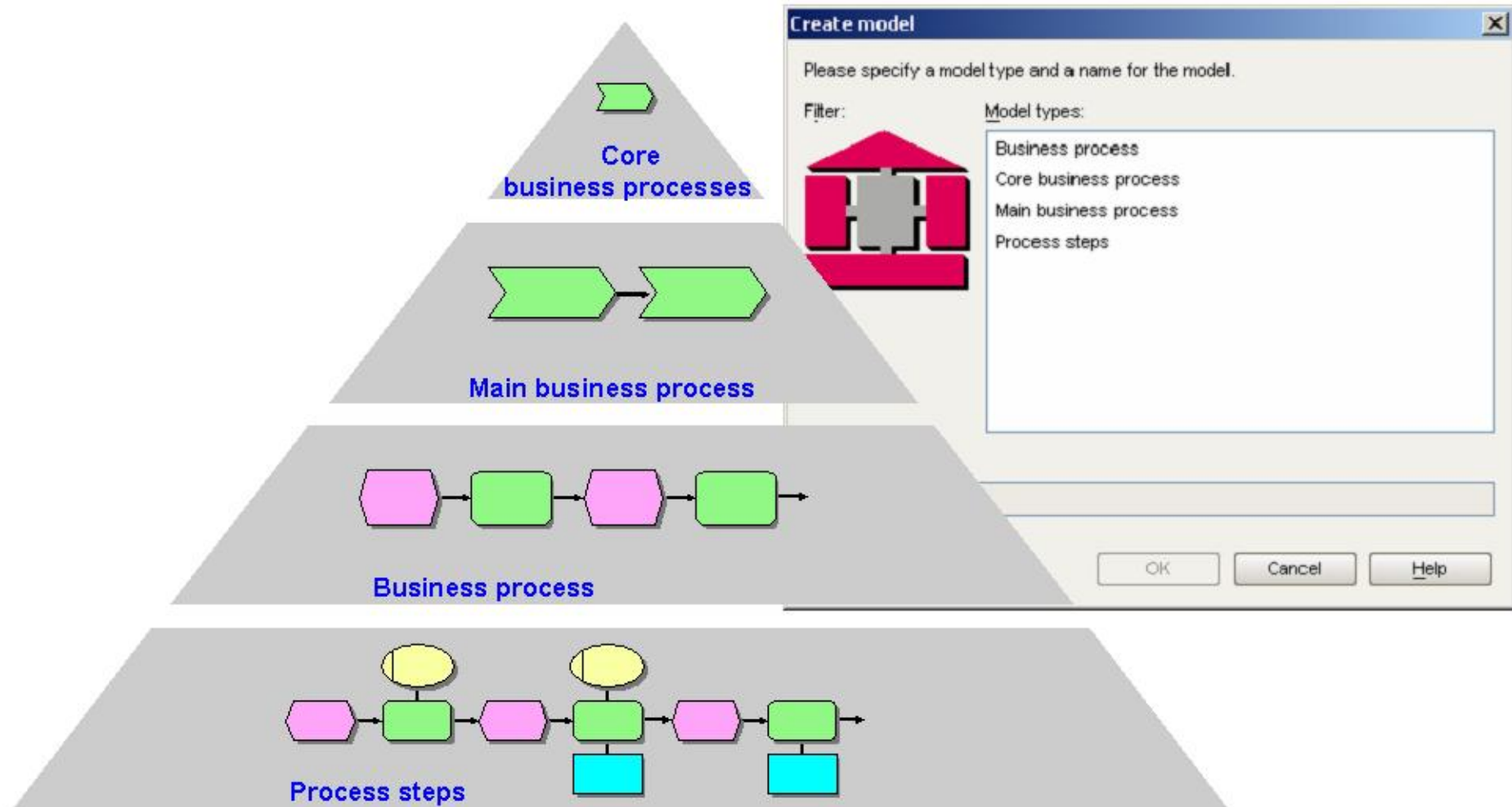
# Governance & SOA



# Modeling & SOA



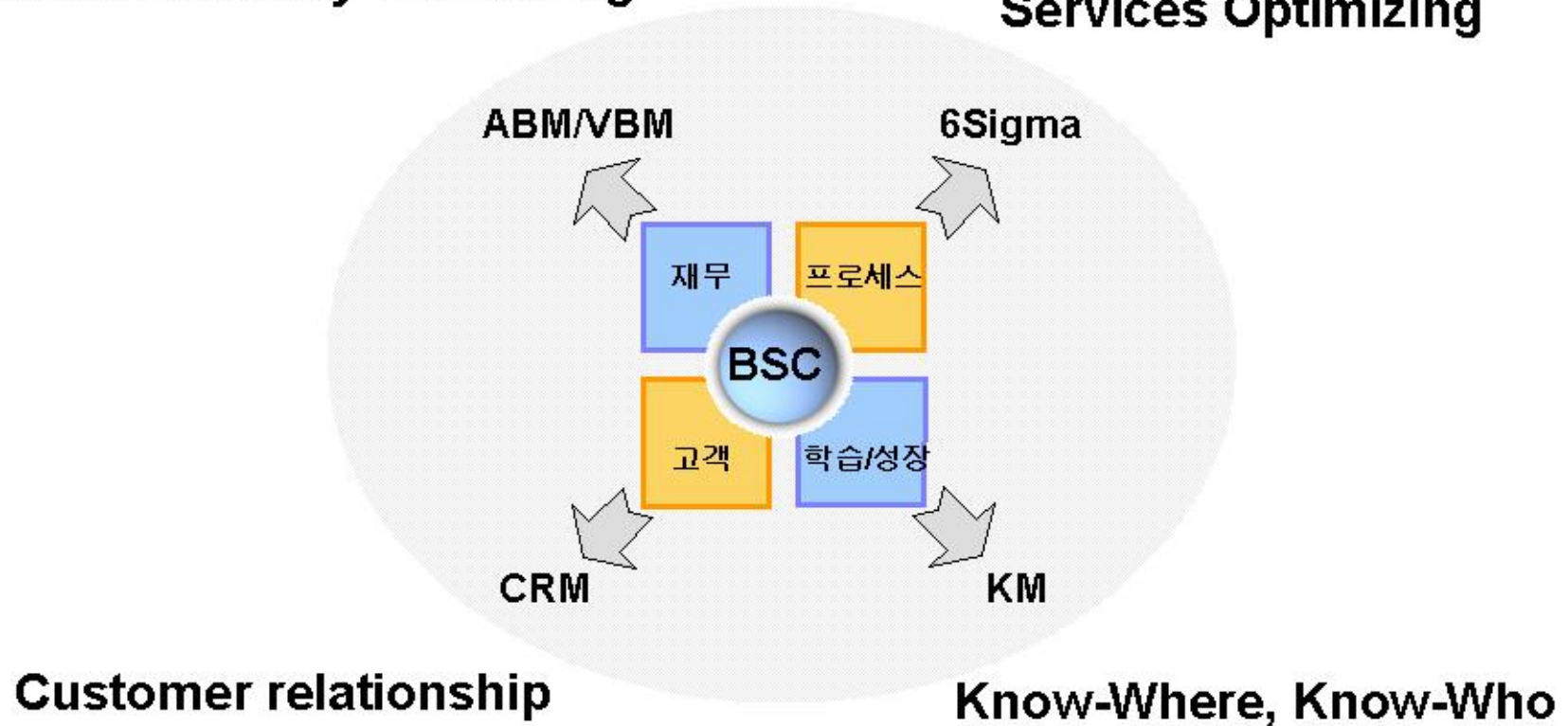
# Modeling & SOA



# BSC & SOA

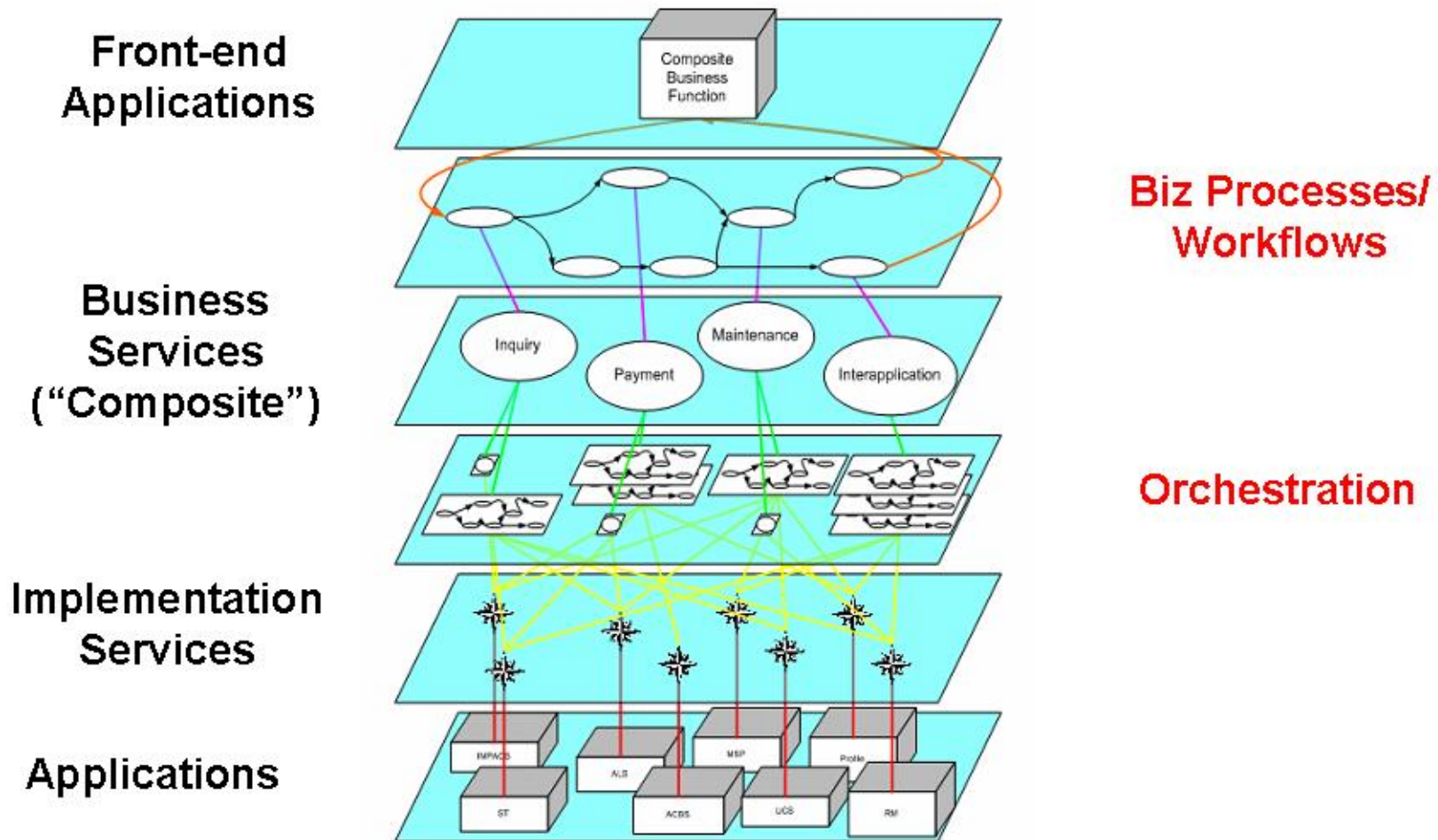
**Business Activity Monitoring**

**Services Optimizing**





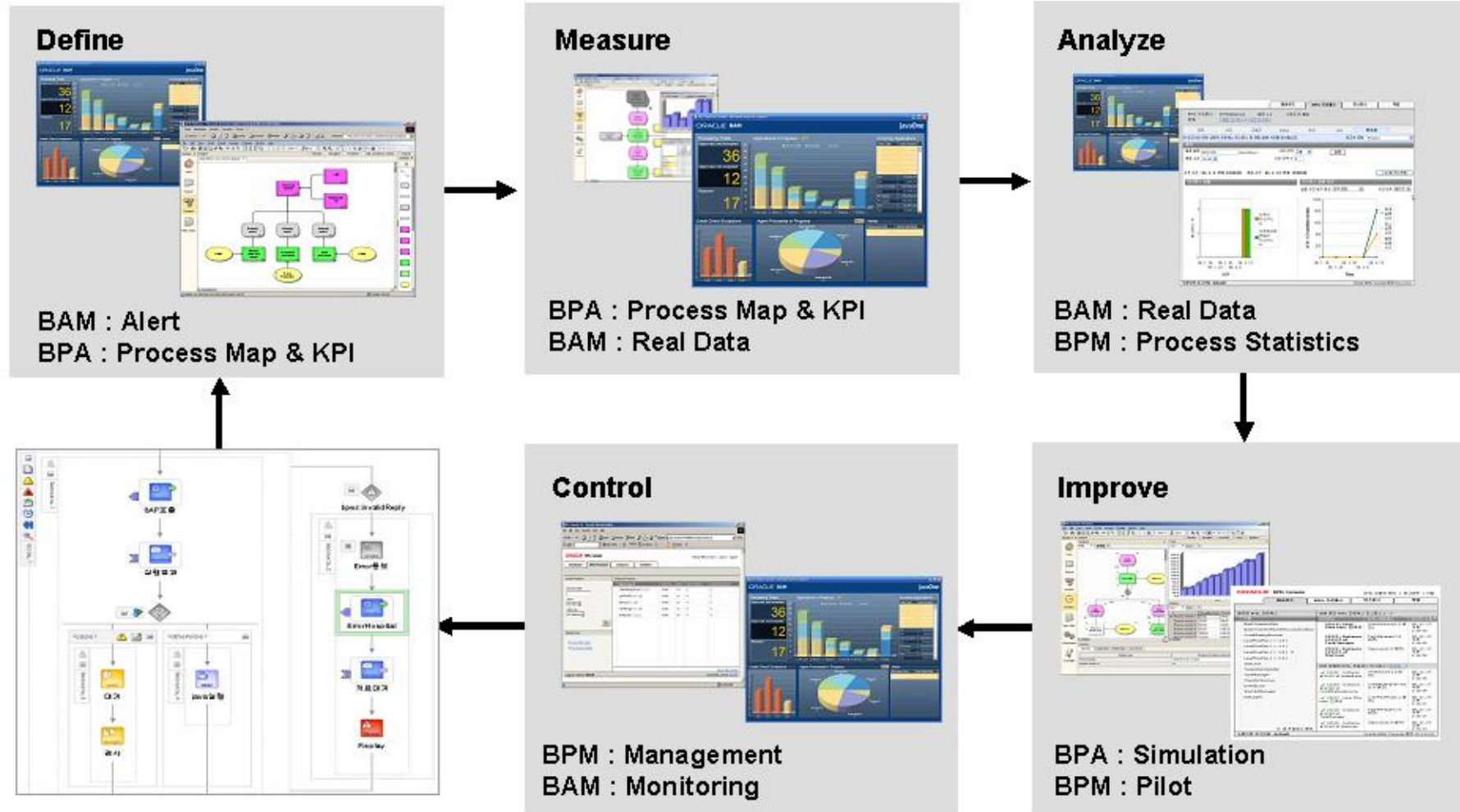
# BPM & SOA



# ERP & SOA

구분	ERP	SOA
진행 주체	경영, 시스템, 프로세스 컨설턴트	경영, 시스템, 프로세스 컨설턴트
목적	업무 및 데이터 표준화	End to End Service 표준화
시스템 영역	단위업무 (Functional)	프로세스(cross-Functional)
통제영역	해당 ERP에서 제공하는 단위 업무 + 추가 도입 및 개발 된 업무	ERP를 포함한 기업 내외의 모든 시스템에서 처리하는 단위업무, 조직구성원이 수행하는 시스템 외 처리 업무
구현범위	ERP Package에서 제공하는 컴포넌트	Workflow, 시스템 통합, 데이터 통합, 사용자 인터페이스 통합
사용자환경	ERP 기능	해당 업무 포털

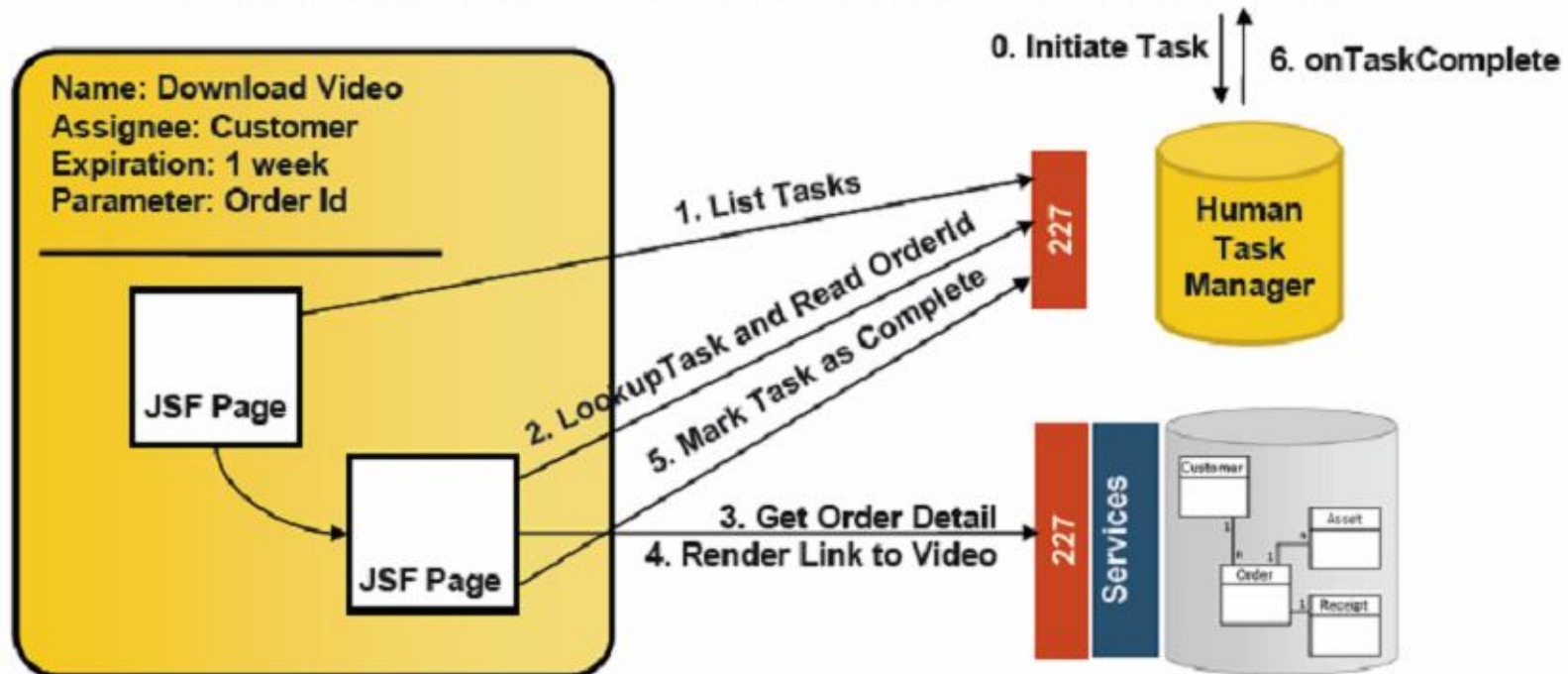
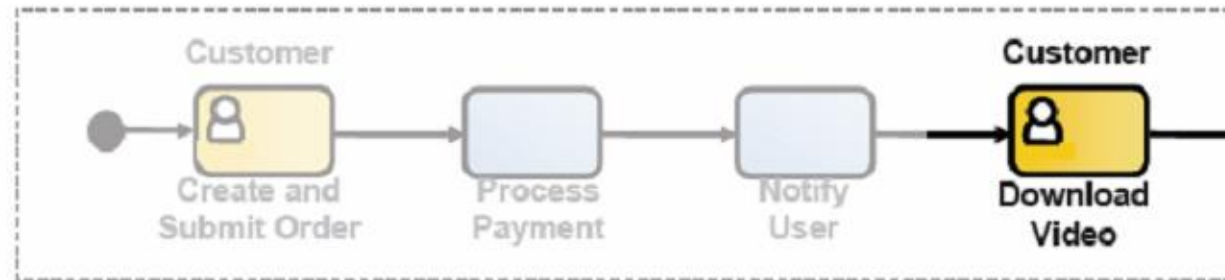
# 6 Sigma & SOA





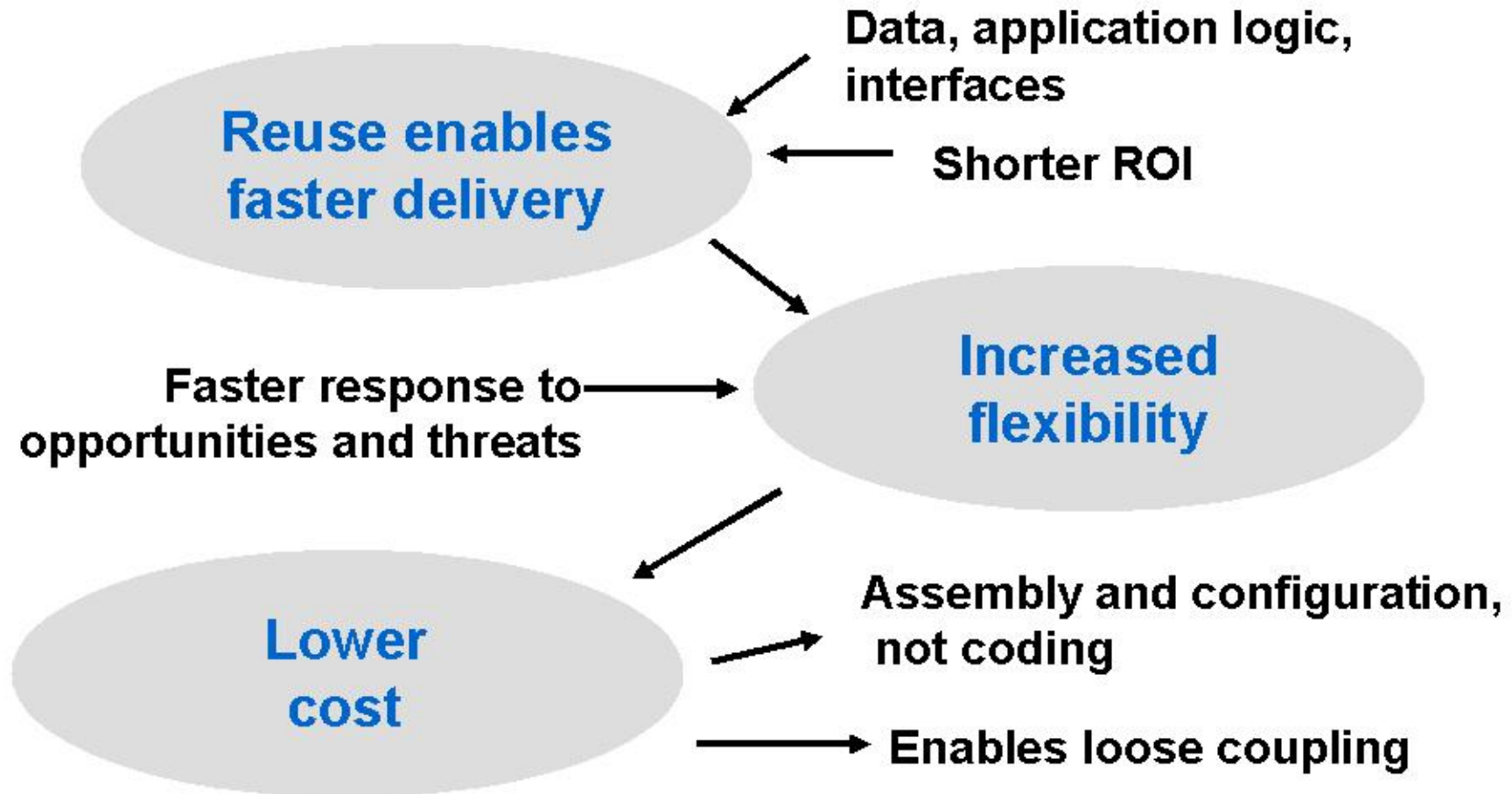
# Business Process

# Real Business Process



# Business Value

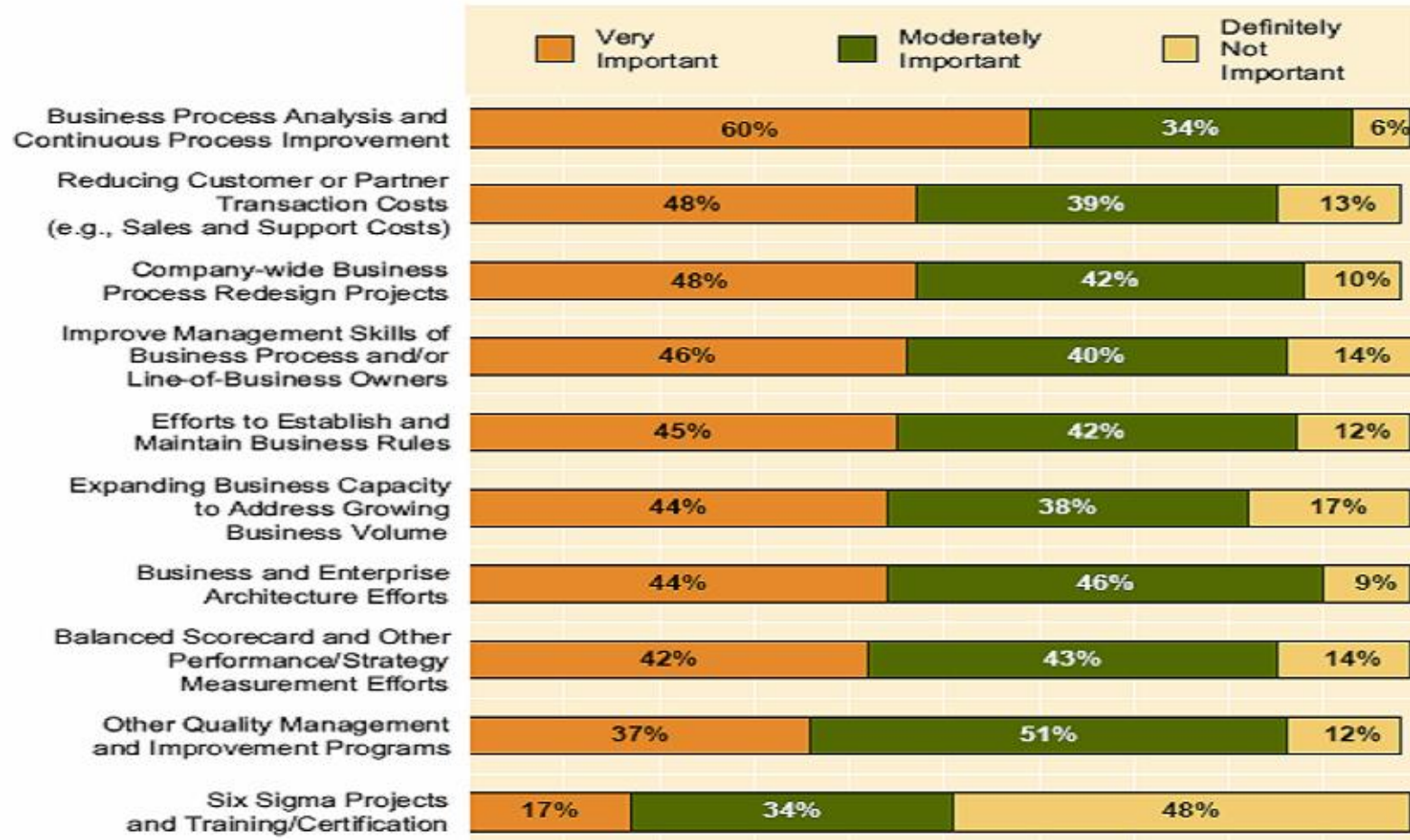
composite applications & services



# Business Process Goals

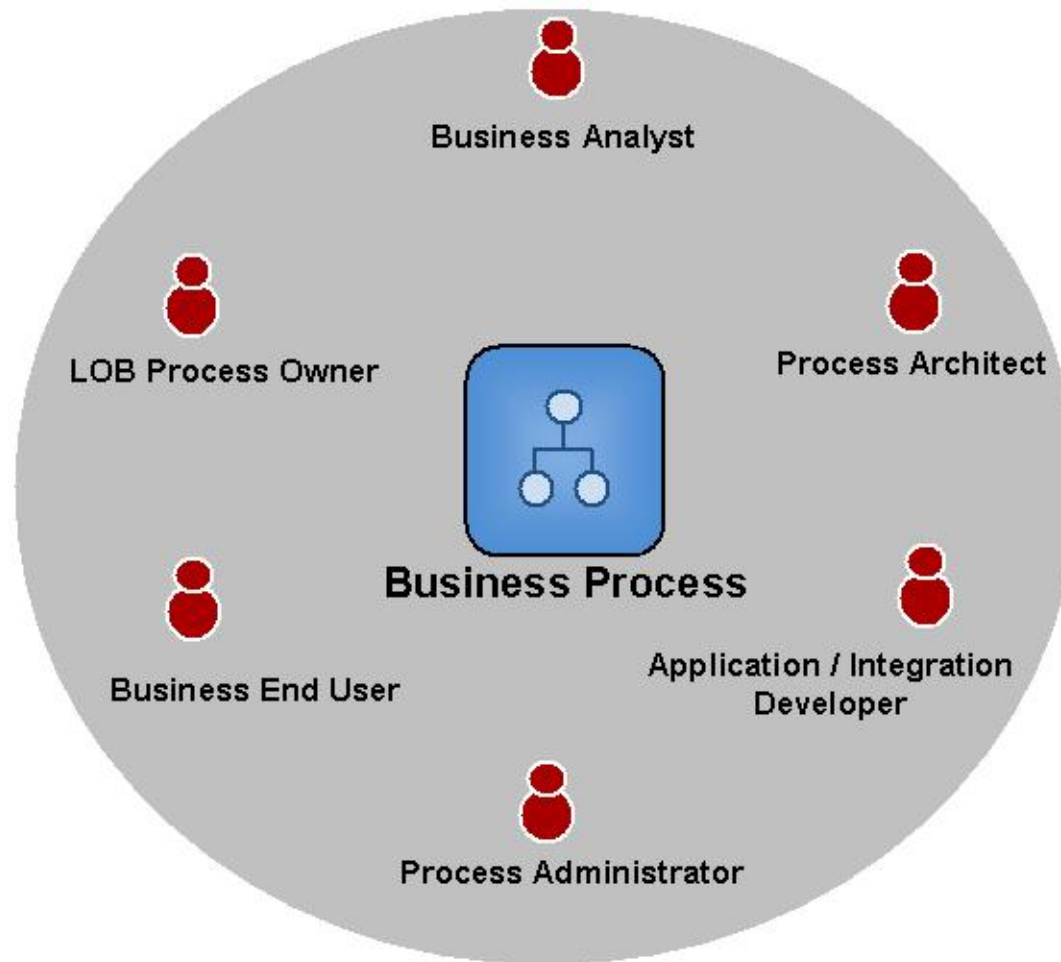
## *Ranking of Business Process Goals and Initiatives*

The 2005 Delphi Report - BPM Market Milestone Report

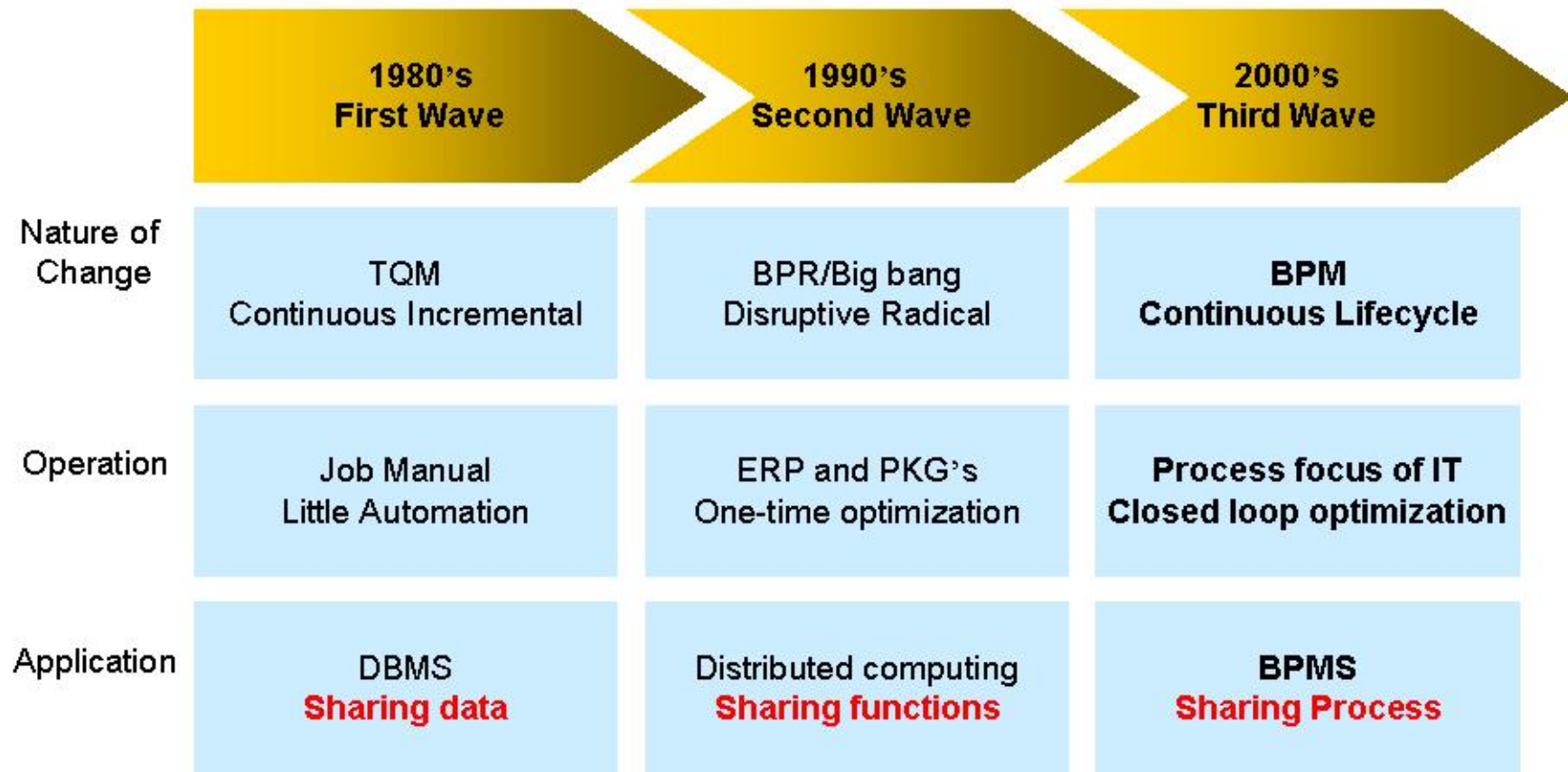


# Business Process Users

## Key Users & Stakeholders



# Process Management History



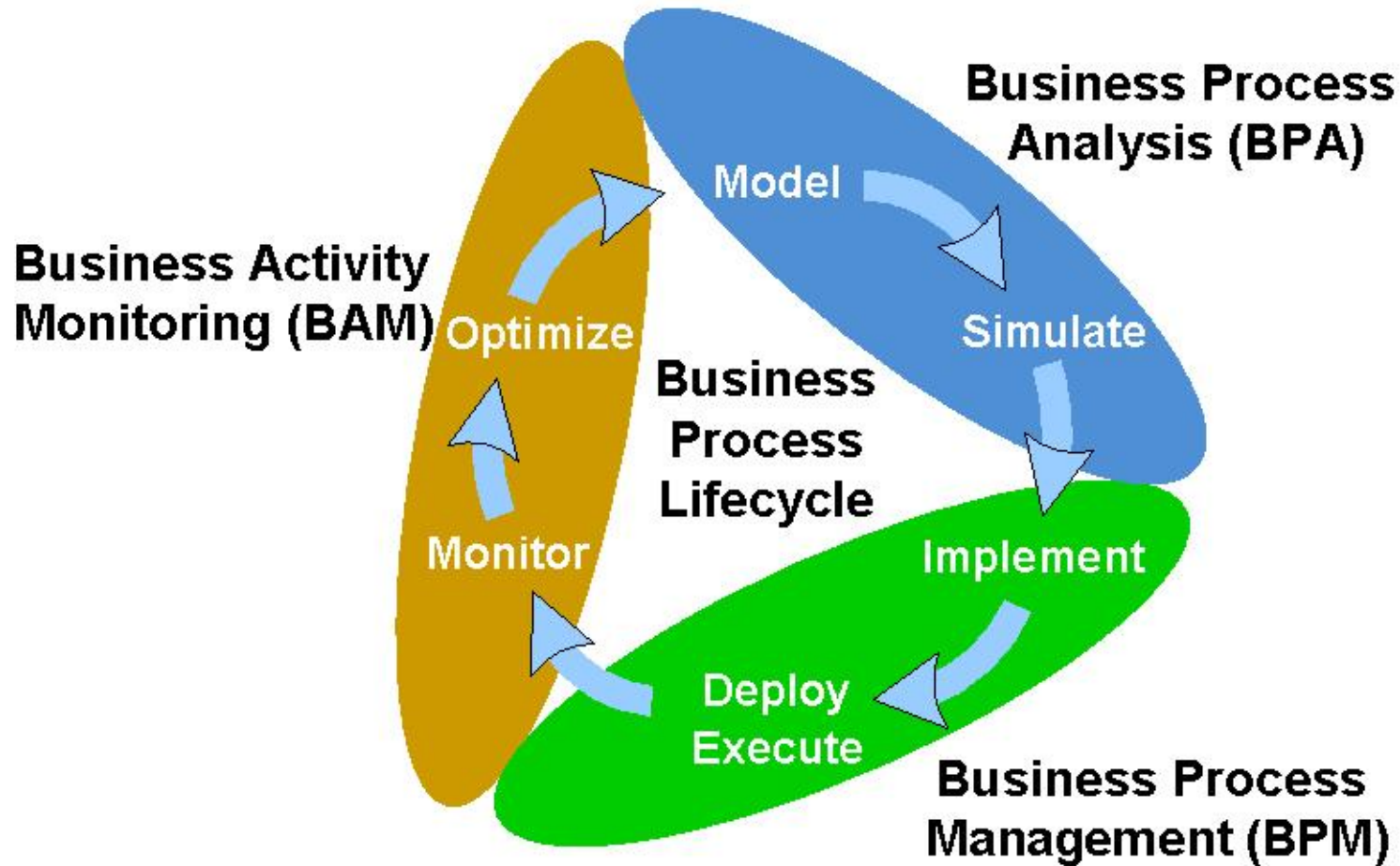
Howard Smith (BPM –The 3<sup>rd</sup> Wave)

# Business Process Lifecycle



# Business Process Lifecycle

BPA, BPM, BAM






# Business Process Lifecycle Modeling



**Ms. Rosenfeld**  
→ Person in charge of the process



Worldwide process design



**Ms. Meyer**  
→ Project manager



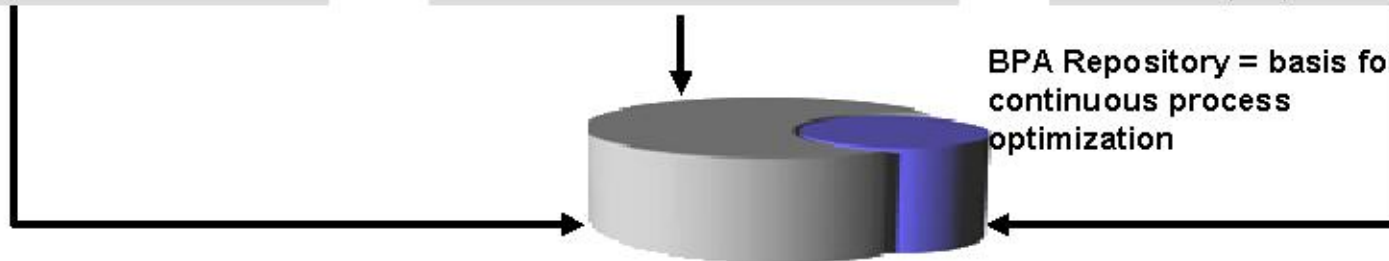
Analysis, optimization, and administration



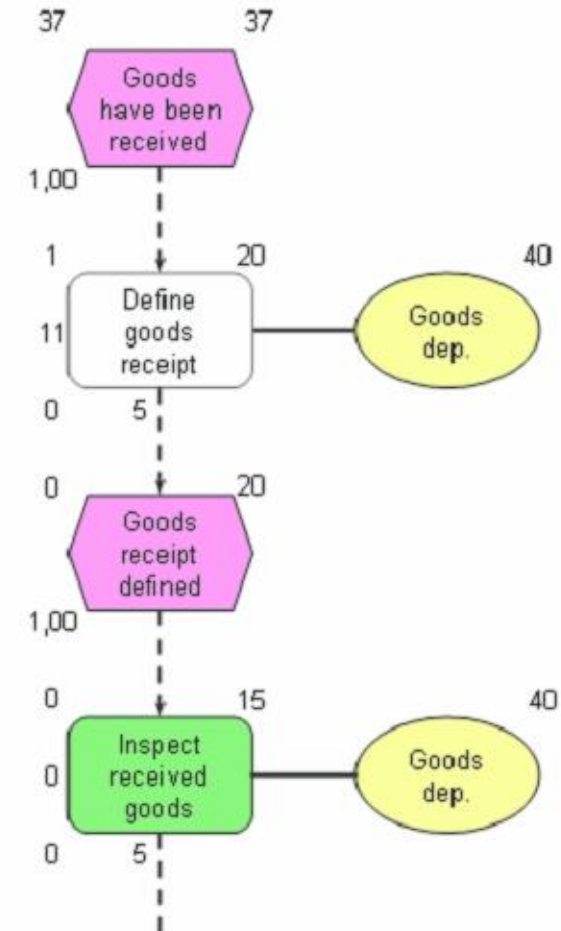
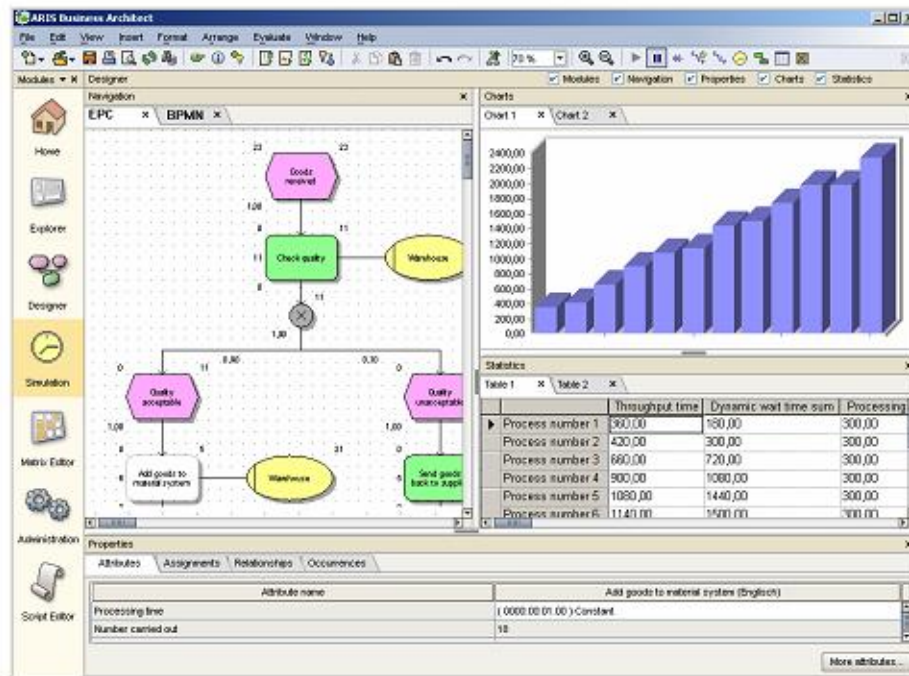
**Technical departments**  
→ Staff in charge



Worldwide communication of process knowledge to all employees

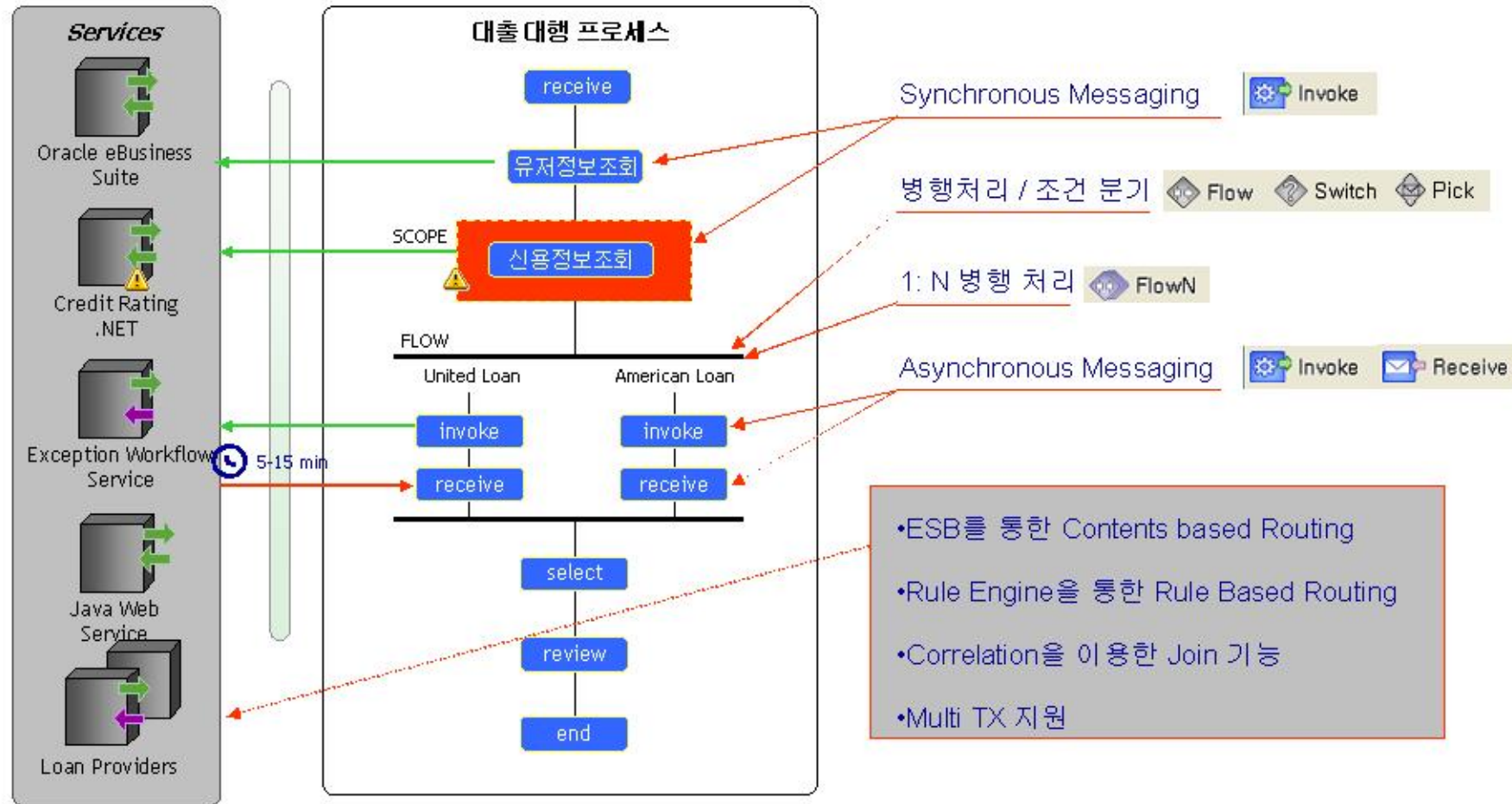


# Business Process Lifecycle Simulation



# Business Process Lifecycle

## Implement





# Business Process Lifecycle

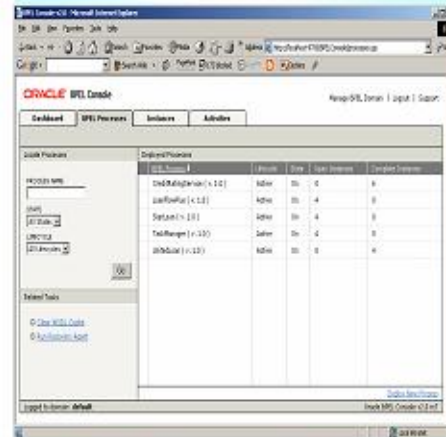
## Deploy & Execute

### Deploy



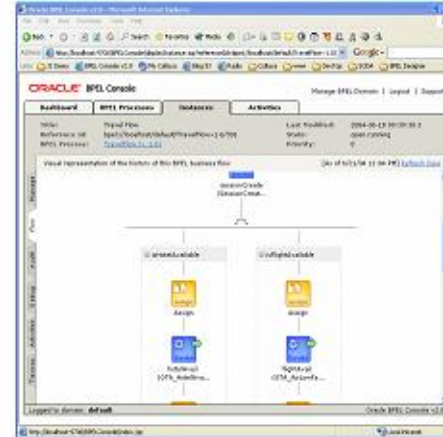
- **JDeveloper**에서 버전별로 **Deploy** 하며 그전에 기본적인 테스트와 디버깅을 수행한다.

### Processes



- **BPEL** 콘솔에서 배치된 프로세스들의 상황을 파악할 수 있고, 개별 프로세스를 테스트한다.

### Instances



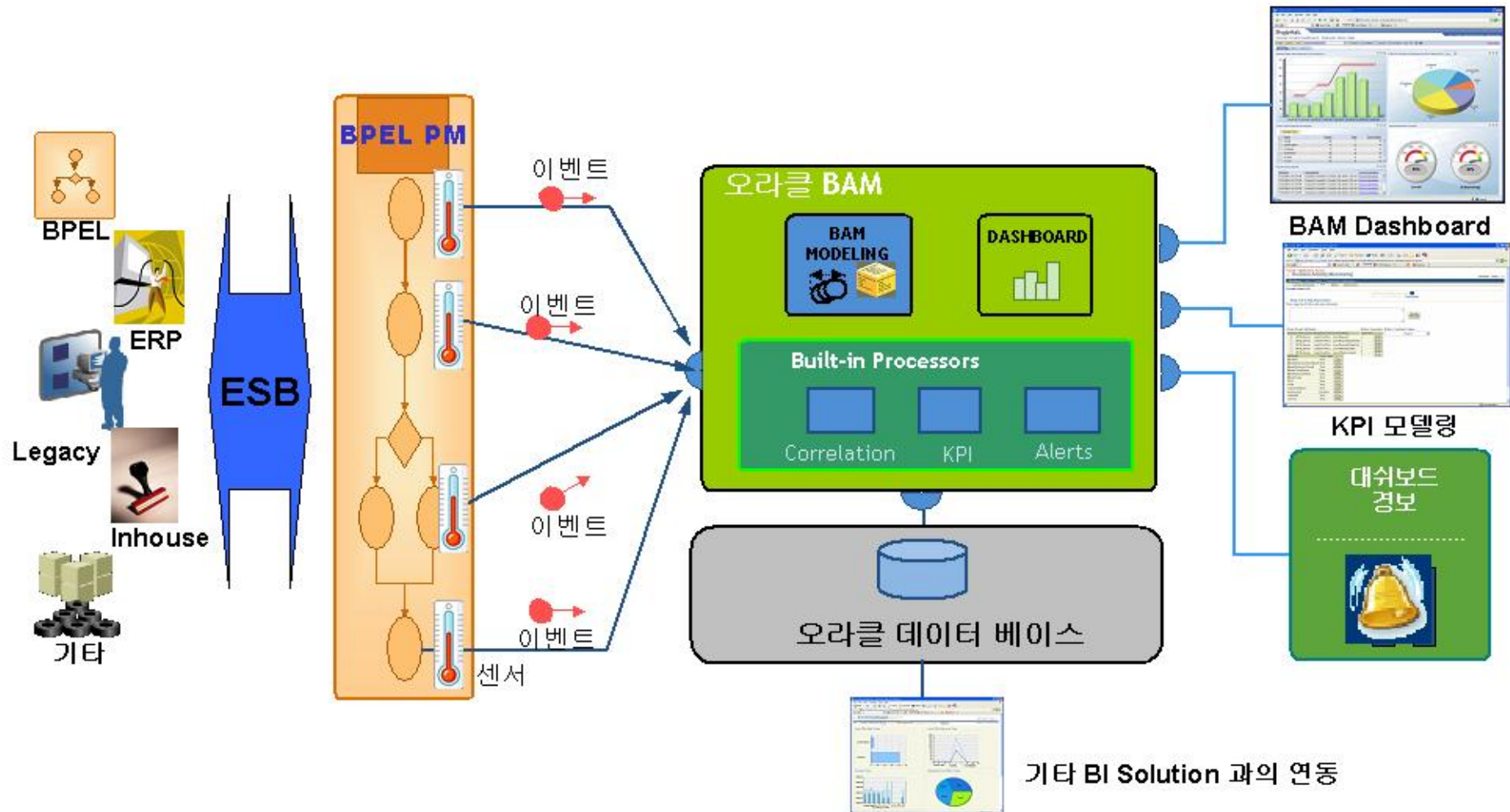
- 배치된 프로세스의 흐름을 추적하고 현재 활성화된 인스턴스의 상태를 확인한다. 또한, **BPEL Designer**와 연동되어 디버깅을 수행한다.

### Performance



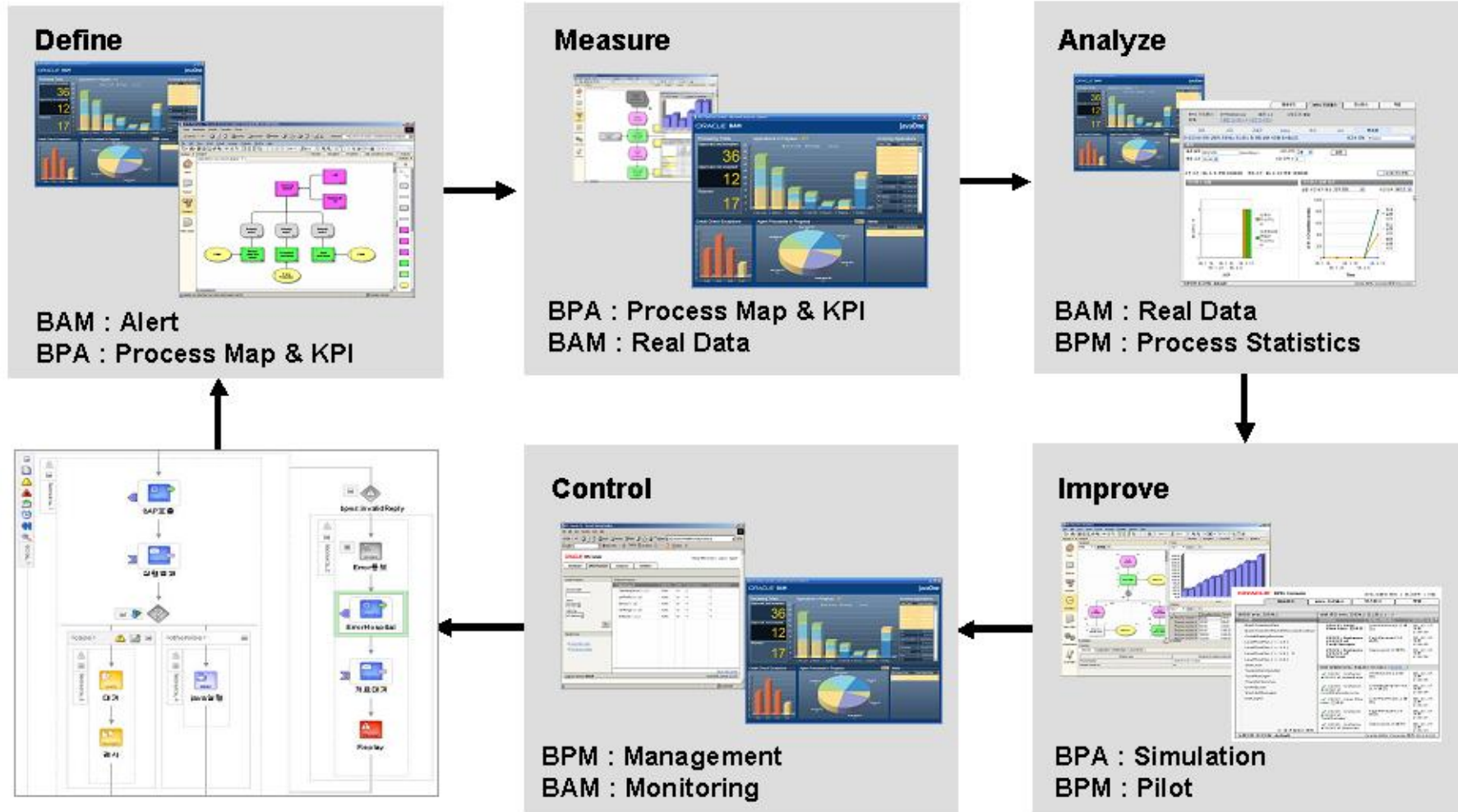
- **BPEL** 콘솔에서 직접 프로세스를 실행할 수 있으며 **Performance** 테스트까지 수행한다.

# Business Process Lifecycle Monitoring



# Business Process Lifecycle

## Optimizing



감사합니다...