



## 5 X

### 5.1

FreeBSD

XFree86

XFree86 X

FreeBSD

XFree86

XFree86

XFree86

(<http://XFree86.org/>)

- X

- XFree86

- 

가

- XFree86

가

- 

(XDM)

가

- 

(4 ).

### 5.2 X

X

MacOS

X

X

가

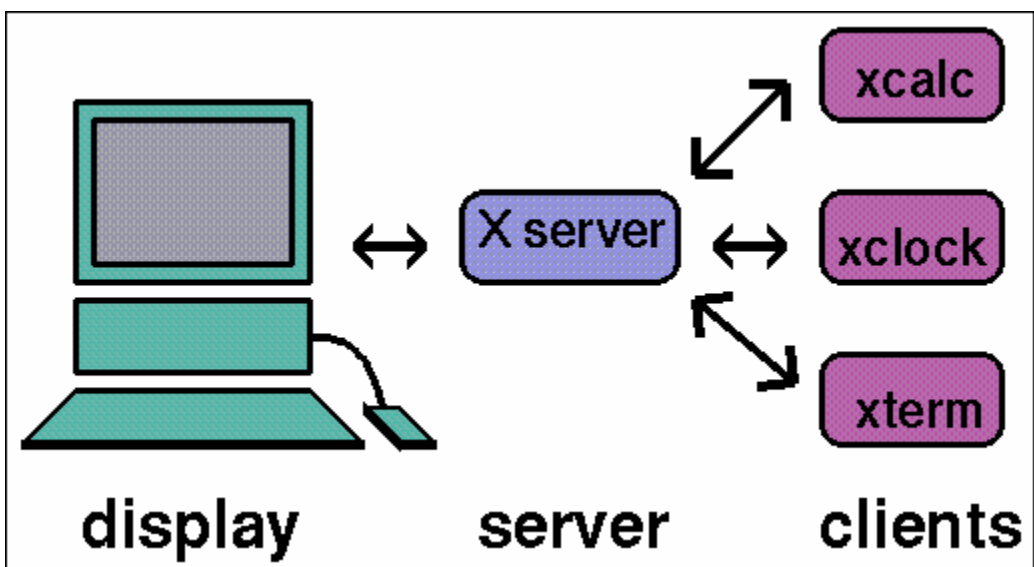
X 가 .

### 5.2.1 X 가?

X . X  
 X  
 "W"("Window") . X  
 X "X", "X " , "X11" . "X " X11  
 ;  
 X(7)

### 5.2.2 X /

X 가 " - "  
 . X "X " , 가  
 , 가 . X  
 (XTerm Netscape ) " . "  
 " 가 OK  
 "





가 " " 가

x11 - wm

가 KDE GNOME 가

가 GUI

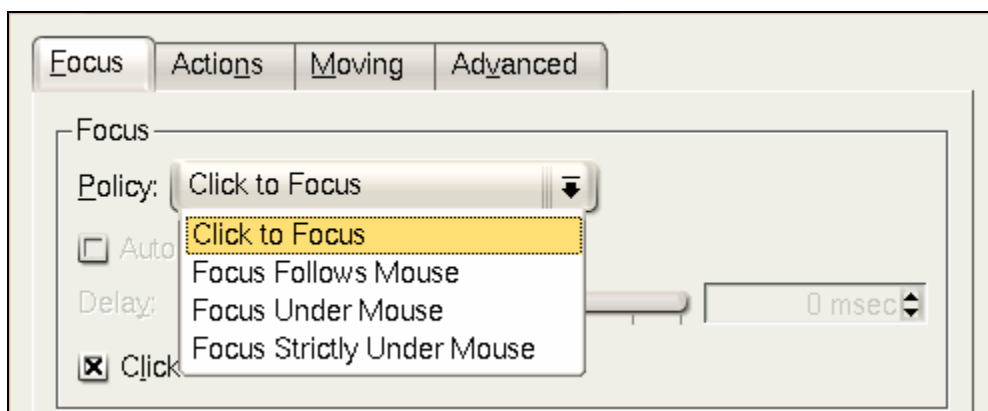
(sawfish) Lisp 가

:

" "

X 가

가



가 .

focus - follow - mouse

가 . 가 가

sloppy - focus

focus - follows - mouse . focus - follows -

mouse 가 root ( )

. sloppy - focus

가 가

click - to - focus

가

## 5.2.4

" "

;

MacOS

가

. X

X

MIT, Motif(가), OpenLook  
3), OpenLook  
X KDE Qt GNOME  
GTK

## 5.3 XFree86

XFree86 . XFree86 3.X XFree86  
XFree86 4.X  
가  
3.X  
4.X  
XFree86 4.X FreeBSD  
4.X  
FreeBSD FreeBSD XFree86 4.X  
(2.9.11). XFree86 3.X  
FreeBSD XFree86  
XFree86 3.X

```
# cd /usr/ports/x11/XFree86
# make all install clean
```

```
XFree86 XFree86 (http://www.XFree86.org/)
FreeBSD . pkg_add(1)
XFree86 4.X . pkg_add(1)
. pkg_add(1)
XFree86 4.X
```

```
# pkg_add -r XFree86
```

XFree86 4.X

```
# cd /usr/ports/x11/XFree86-4  
# make install clean
```

Note: , , XFree86  
XFree86 4.X

XFree86

## 5.4 XFree86

### 5.4.1

XFree86 4.X 가 :

- 
- 
- 

XFree86 가

XFree86



## 5.4.2 XFree86 4.X

XFree86 4.X *-configure* XFree86

# XFree86 -configure

```

    /root          XF86Config.new  (          $HOME
가                )          XFree86
XFree86

```

XFree86

# XFree86 -xf86config XF86Config.new

```

    X          가
    Ctrl+Alt+Backspace

```

**Note:** 가 가 FreeBSD  
2.9.10

```

    XF86Config.new          . emacs(1) ee(1)

```

가

```

    XF86Config.new          "Monitor"

```

가 :

Section "Monitor"
-------------------

Identifier	"Monitor0"
------------	------------



```

XFree86(1)
/etc/X11/XF86Config /X11R6/etc/X11/XF86Config

# cp XF86Config.new /etc/X11/XF86Config

startx(1) XFree86 4.X
x11/wrapper XFree86 4.X xdm(1)

Note: XFree86 4.X xf86cfg(1)
xf86cfg -
textmode xf86cfg(1)

```

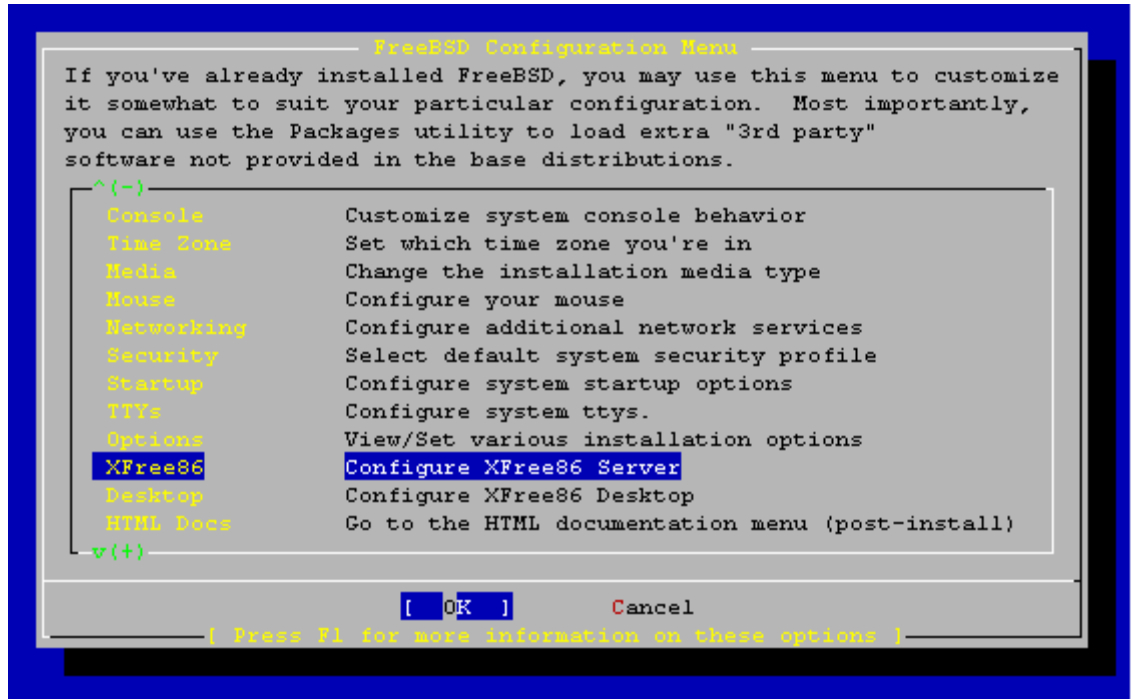
[ : Sysinstall XFree86 ]

1. Sysinstall

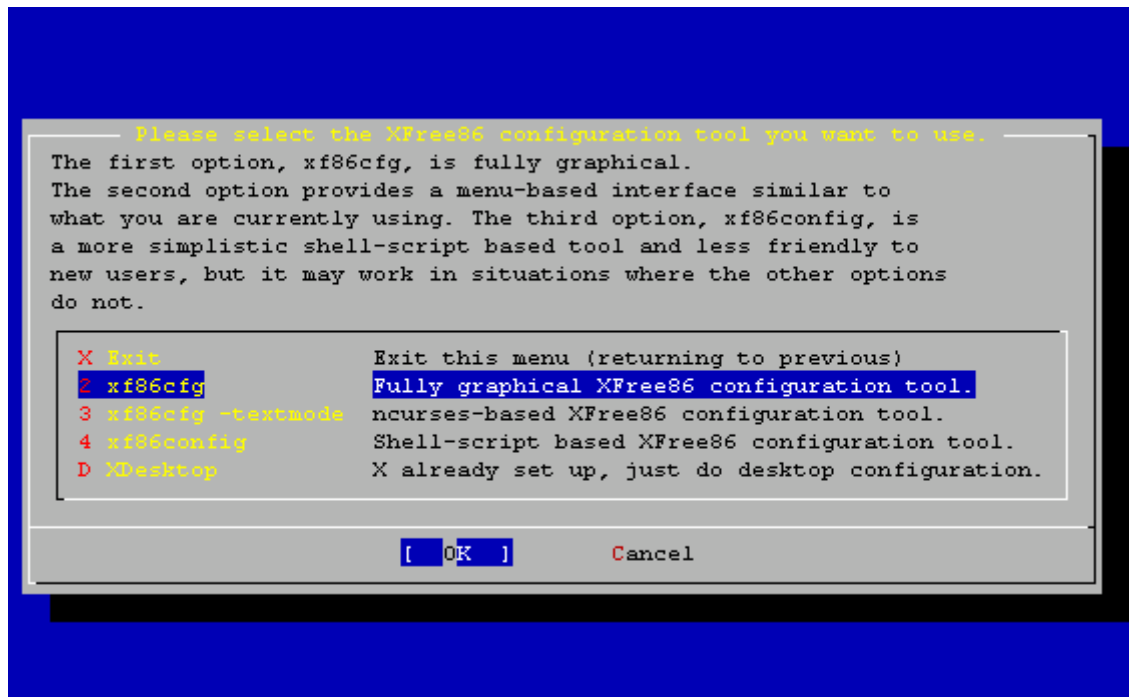
```
# /stand/sysinstall
```



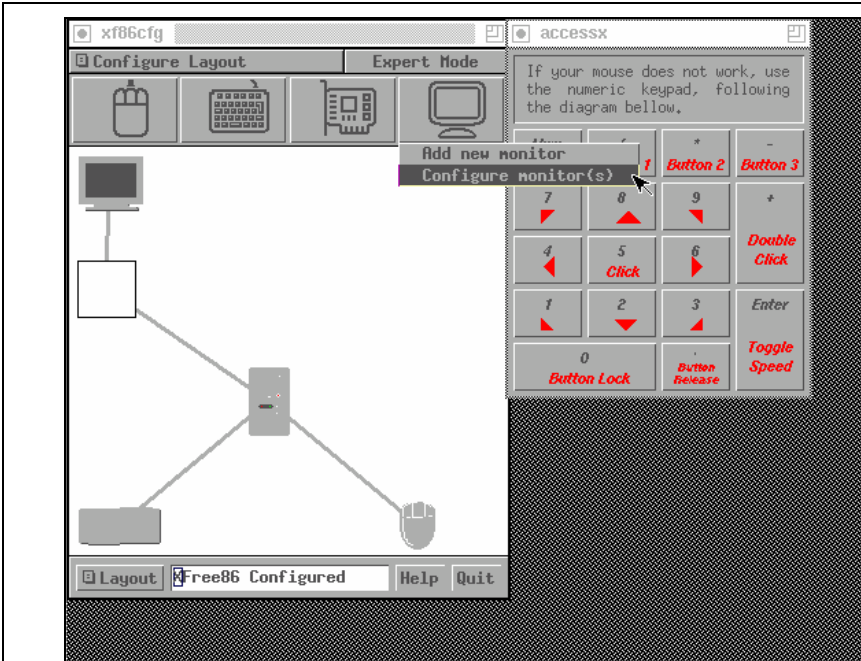
2. Configure → XFree86



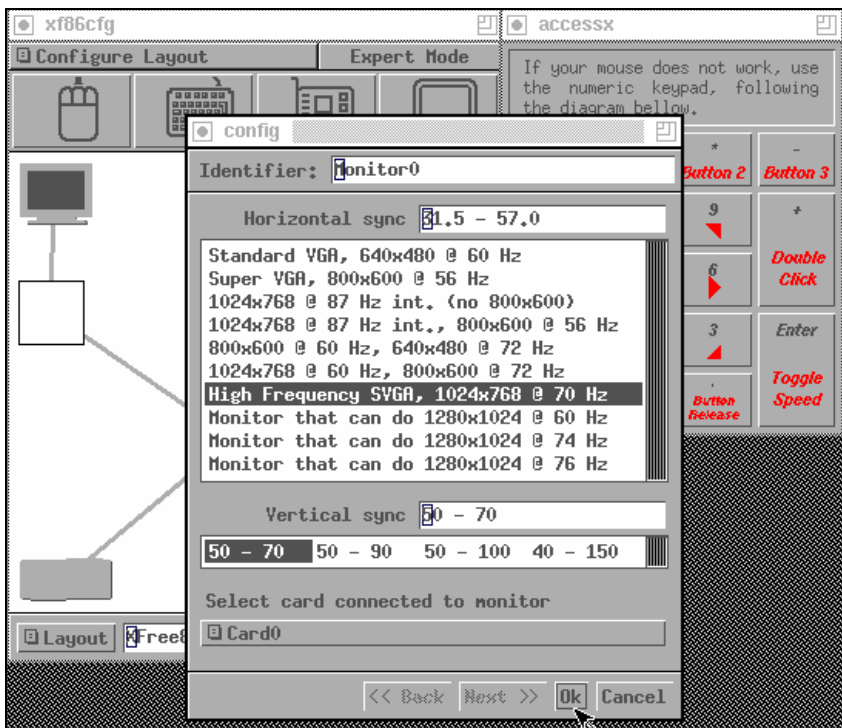
3. XFree86 3 가 가 .







6. Ok



7. 가 Quit



## 5.4.3

### 5.4.3.1 Intel i810

```

i810                                XFree86  agpgart AGP
                                가 . agp(4)  4.8-RELEASE  5.0-RELEASE
GENERIC                            가 .                                가
                                :
```

#### device agp

```

                                agp.ko      loader(8)
/boot/loader.conf              가 :
```

#### agp\_load="YES"

```

FreeBSD 4.X                       가
                                . AGP      /dev      MAKEDEV(8) .
```

```
# cd /dev
```

```
# sh MAKEDEV agpgart
```

```

Note: FreeBSD 5.X              devfs(5)
MAKEDEV(8)                       가 .
```

```

                                . agp(4)   가
                                kldload(8)
```

```
                                /boot/loader.conf .
```

```

XFree86 4.1.0                     (          ) fbPictureInit      가
                                XFree86   Driver "i810"      가 :
```

#### Option "NoDDC"





## 5.5.2

XFree86 4.X 가

```

/etc/X11/XF86Config "Module"
가

```

Load "freetype"

XFree86 3.3.X . Xfstt

. Xfstt x11-servers/Xfstt

( /usr/X11R6/lib/X11/fonts/TrueType)

가 ; XFree86 /DOS/ Macintosh

ttmkfdir fonts.dir X 가

. ttmkfdir FreeBSD x11-

fonts/ttmkfdir

```
# cd /usr/X11R6/lib/X11/fonts/TrueType
```

```
# ttmkfdir > fonts.dir
```

가 1

FontPath XF86Config 가

```
% xset fp+ /usr/X11R6/lib/X11/fonts/TrueType
```

```
% xset fp rehash
```

Netscape, Gimp, StarOffice X

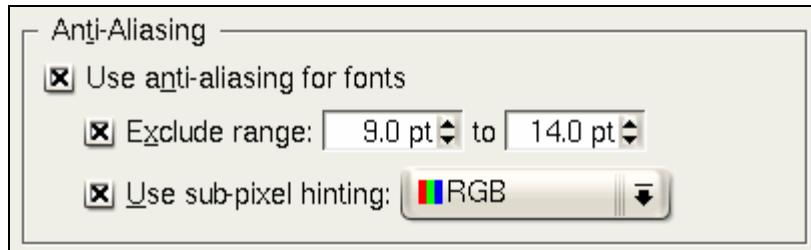
( )

(StarOffice )

### 5.5.3 Anti - Aliased

Anti-aliasing XFree86 4.0.2 XFree86 4.3.0  
 /usr/X11R6/lib/X11/fonts/ 4.3.0 ~/.fonts/ Xft-aware  
 anti-aliasing Xft Qt2.3 (KDE  
 ), Gtk+ 2.0 (GNOME) Mozilla 1.2

#### KDE Anti-Aliasing



anti-aliasing anti-aliasing  
 /usr/X11R6/etc/fonts/local.conf ( ). Xft  
 가 가  
 fonts-conf(5)  
 XML  
 XML DOCTYPE <fontconfig> :  
 <?xml version="1.0"?>  
 <!DOCTYPE fontconfig SYSTEM "fonts.dtd">  
 <fontconfig>  
 ~/.fonts/ /usr/X11R6/lib/X11/fonts/ Xft-aware  
 가 가  
 /usr/X11R6/etc/fonts/local.conf 가 :  
 <dir>/path/to/my/fonts</dir>

가

:

# fc-cache -f

Anti-aliasing

가

. anti-aliasing 가 14

:

<match target="font">

<test name="size" compare="less">

<double>14</double>

</test>

<edit name="antialias" mode="assign">

<bool>>false</bool>

</edit>

</match>

<match target="font">

<test name="pixelsize" compare="less" qual="any">

<double>14</double>

</test>

<edit mode="assign" name="antialias">

<bool>>false</bool>

</edit>

</match>

anti-aliasing

KDE 가 . 가 100

. 가

<match target="pattern" name="family">

<test qual="any" name="family">

<string>fixed</string>

</test>

<edit name="family" mode="assign">

```
<string>mono</string>
</edit>
</match>
<match target="pattern" name="family">
  <test qual="any" name="family">
    <string>console</string>
  </test>
  <edit name="family" mode="assign">
    <string>mono</string>
  </edit>
</match>
```

( “mono” ), 가 :

```
<match target="pattern" name="family">
  <test qual="any" name="family">
    <string>mono</string>
  </test>
  <edit name="spacing" mode="assign">
    <int>100</int>
  </edit>
</match>
```

Helvetica anti - aliase 가 . 가

**Mozilla**

local.conf 가 :

```
<match target="pattern" name="family">
  <test qual="any" name="family">
    <string>Helvetica</string>
  </test>
  <edit name="family" mode="assign">
    <string>sans - serif</string>
  </edit>
</match>
```

local.conf </fontconfig>

**XFree86** anti-aliasing

x11-fonts/bitstream-vera

/usr/X11R6/etc/fonts/local.conf

/usr/X11R6/etc/fonts/local.conf-vera

/usr/X11R6/etc/fonts/local.conf Bitstream **XFree86** Serif, Sans Serif

.fonts.conf

가

가

~/.fonts.conf

XML

: LCD

local.conf

가

가

:

<match target="font">

<test qual="all" name="rgba">

<const>unknown</const>

</test>

<edit name="rgba" mode="assign">

<const>rgb</const>

</edit>

</match>

**Note:**

*rgb bgr, vrgb vbgr*

가

;

가

Anti-aliasing X 가

**Qt**

**KDE**

anti-alias ( 5.7.3.2 )

. **Gtk+ GNOME**

"Font" caplet anti-aliasing ( 5.7.1.3 )

**Mozilla 1.2**

anti-aliasing

. Anti-aliasing

-DWITHOUT\_XFT

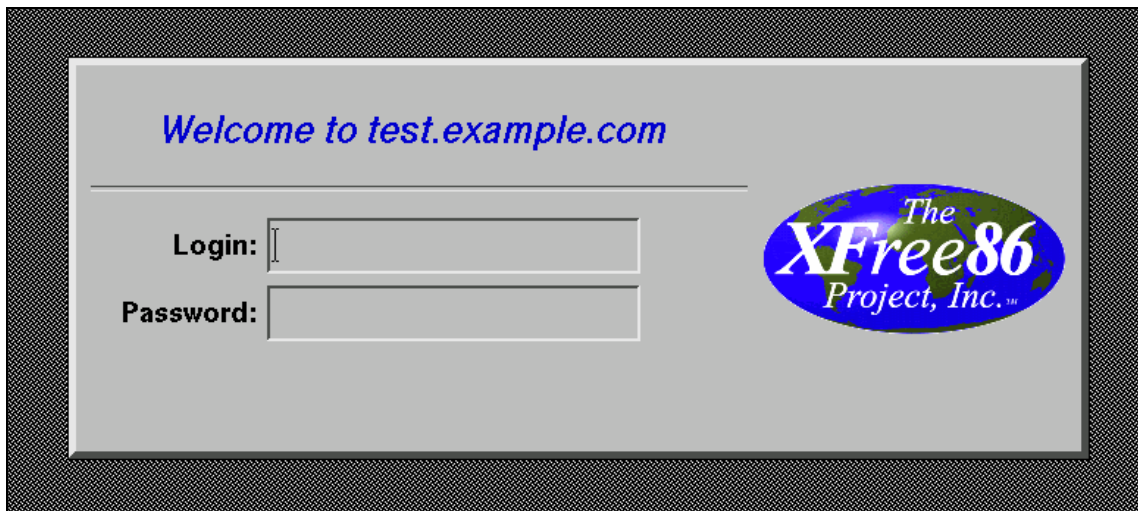
Mozilla

## 5.6 X

### 5.6.1

X (XDM) X 가  
 "X " 가  
 X X  
 가 X  
 . XDM

XFree86 XDM



getty(8) XDM ( )  
 20.3.2 ). 가  
 ( X ). XDM 가  
 가  
 XDM 가

## 5.6.2 XDM

```
XDM          /usr/X11R6/bin/xdm          .          root
              X          .          XDM
              /etc/ttys          가          .
20.3.2.1          . /etc/ttys          가          XDM
:
```

```
ttv8 "/usr/X11R6/bin/xdm -nodaemon" xterm off secure
```

```

;          5 off on
20.3.2.2          init(8)
          ttyv8          .          XDM 9 가
```

## 5.6.3 XDM

```
XDM          /usr/X11R6/lib/X11/xdm          .          XDM
:
```

Xaccess	
Xresources	X
Xservers	
Xsession	
Xsetup_*	가
xdm - config	
xdm - errors	
xdm - pid	XDM ID.

**XDM**

xdm(1)



"Login:" "Password:" 가 .

### 5.6.3.1 Xaccess

(XDMCP) XDM X  
XDMCP  
xdm - config

### 5.6.3.2 Xresources

default XFree86 app -

### 5.6.3.3 Xservers

### 5.6.3.4 Xsession

가 XDM  
~/.xsession 가

### 5.6.3.5 Xsetup\_\*

가 Xsetup\_  
가( Xsetup\_0) 가

가 . xconsole

### 5.6.3.6 xdm - config

app - defaults

### 5.6.3.7 xdm - errors

XDM X 가 . XDM

~/.xsession - errors

## 5.6.4

. XDM

xdm - config

! SECURITY: do not listen for XDMCP or Chooser requests  
! Comment out this line if you want to manage X terminals with xdm  
DisplayManager.requestPort: 0

XDM . app - defaults “#”  
"! 가 . Xaccess  
xdm(1)

## 5.6.5 XDM

XDM . KDM (KDE  
) . KDM 가

## 5.7

FreeBSD X " KDE GNOME

### 5.7.1 GNOME

#### 5.7.1.1 GNOME

GNOME 가 . GNOME (Panel)( ), ( ),

#### GNOME

. FreeBSD GNOME

FreeBSD GNOME (<http://www.FreeBSD.org/gnome>)



### 5.7.1.2 GNOME

GNOME           가                   2                   FreeBSD                   "Desktop  
Configuration"

GNOME

```
# pkg_add -r gnome2
```

GNOME

```
# cd /usr/ports/x11/gnome2  
# make install clean
```

GNOME           X    가                   GNOME

```
  . .xinitrc 가  
/usr/X11R6/bin/gnome-session
```

```
% echo "/usr/X11R6/bin/gnome-session" > ~/.xinitrc
```

startx                   GNOME

```
Note: XDM                   가  
                          .xsession  
                                  /usr/X11R6/bin/gnome-session
```

```
% echo "#!/bin/sh" > ~/.xsession  
% echo "/usr/X11R6/bin/gnome-session" >> ~/.xsession  
% chmod +x ~/.xsession
```

KDE                   KDE                   kdm

### 5.7.1.3 Anti-aliase GNOME

4.0.2 가 XFree86 anti-aliasing "RENDER" . Gtk+2.0  
 (GNOME ) . Anti-aliasing  
 5.5.3 anti-aliasing GNOME  
 . Applications -> Desktop Preferences -> Font Best shapes,  
 Best contrast Subpixel smoothing(LCD) . GNOME  
 Gtk+ GDK\_USE\_XFT 1

## 5.7.2 KDE

### 5.7.2.1 KDE

KDE . KDE 가 가

- 
- 
- KDE
- KDE
- , , - .
- : KDE 40
- dialog
- KDE

KDE

KDE "KParts"

가

KDE

Konqueror

가

KDE

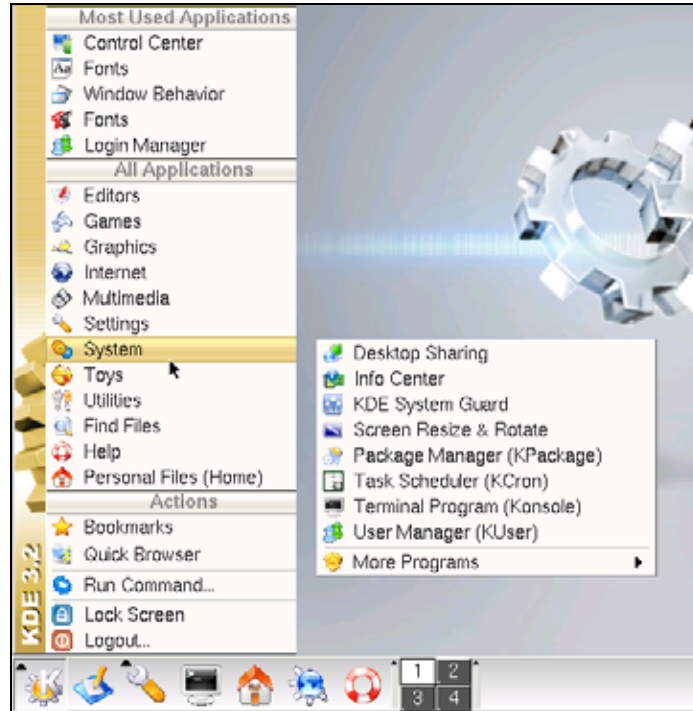
KDE

(<http://www.kde.org/>)

KDE

FreeBSD

FreeBSD - KDE (<http://freebsd.kde.org/>)



### 5.7.2.2 KDE

GNOME

KDE

가

2.9.12

FreeBSD

"Desktop Configuration"

KDE

```
# pkg_add -r kde
```

```
pkd_add(1)
```

KDE

:

```
# cd /usr/ports/x11/kde3
```

```
# make install clean
```

```
KDE 가 X
. .xinitrc :
```

```
% echo "exec startkde" > ~/.xinitrc
```

```
X startx KDE 가
xdm . .xsession
. kdm .
```

## 5.7.3 KDE

KDE 가 Mac

KDE KDE Konqueror  
가

### 5.7.3.1 KDE

```
xdm KDE xdm
가 kdm 가
(KDE, GNOME )
root KDE kcontrol root X
(xterm KDE konsole ) su root 가 ( /etc/group
wheel ) kcontrol
```

```

System                                Login manager
KDE                                    session
.                                       .
.                                       가
.                                       New type
.                                       KDE  GNOME
. failsafe

```

Apply

```

kdm      (KDE, GNOME )      xdm

```

Note: KDE 2.2 ; kdm  
KDE 2.2

```

root      /usr/X11R6/lib/X11/xdm/Xsession

```

```

case $# in

```

```

1)

```

```

    case $1 in

```

```

        failsafe)

```

```

            exec xterm -geometry 80x24-0-0

```

```

            ;;

```

```

        esac

```

```

esac

```

```

가

```

```

"KDE" "GNOME"

```

```

가

```

```

case $# in

```

```

1)

```

```

    case $1 in

```

```

        kde)

```

```

            exec /usr/local/bin/startkde

```

```

            ;;

```

```

        GNOME)

```



```

        exec /usr/X11R6/bin/gnome-session
        ;;
    failsafe)
        exec xterm -geometry 80x24-0-0
        ;;
    esac
esac

```

KDE

/usr/X11R6/lib/X11/xdm/Xsetup\_0 가 :

/usr/local/bin/kdmdesktop

```

kdm                                /etc/ttys
xdm                                /usr/X11R6/bin/xdm
/usr/local/bin/kdm

```

### 5.7.3.2 Anti-aliase

4.0.2 가 XFree86 anti-aliasing "RENDER" Qt(KDE 가  
 ) 2.3 . 5.5.3 antialiasing X11  
 . anti-aliasing KDE  
 . KDE Preferences -> Look and Feel -> Fonts  
 Use Anti-Aliasing for Fonts and Icons . KDE 가 Qt  
 QT\_XFT true .

## 5.7.4 XFce

### 5.7.4.1 XFce

XFce GNOME GTK 가  
 CDE  
 . XFce 가

●

- & 가 .
- CDE , , .
- , , , GNOME .
- (GTK ).
- , 가 : / 가 .

XFce XFce (<http://www.xfce.org/>) .

### 5.7.4.2 XFce

XFce 가 ( ).

:

```
# pkg_add -r xfce
```

```
# cd /usr/ports/x11-wm/xfce
```

```
# make install clean
```

```
X XFce X .
```

:

```
% echo "/usr/X11R6/bin/startxfce" > ~/.xinitrc
```

X 가 XFce 가 . xdm

GNOME .xsession

```
/usr/X11R6/bin/startxfce ; kdm
```