



www.fiat.com

CIAO FIAT 800342800
N° VERDE

CIAO FIAT is the after-sales and customer relations service that can be reached with a single free phone number - 00800 3428 0000. The number can be called from most countries in Europe, and is easy to remember: it actually corresponds to the letters of the word 'FIAT' on the keypad of your telephone (00800-FIAT 0000 becomes 00800-3428 0000). CIAO FIAT provides you with roadside assistance and information services – everything you need to know about our models (versions, options, promotions, prices), about our services and about the FIAT dealer network, and you can book a test drive – and to answer all your needs or questions about using your FIAT car. The service is active from 8.00 a.m. to 8.00 p.m. from Monday to Friday, and on Saturday from 8.00 a.m. to 1.00 p.m. for information and customer services, and is active 24 hours a day, 7 days a week, for roadside assistance services. □ The call is free both from land lines and from mobile networks. In some European countries, local operator network charges may apply.

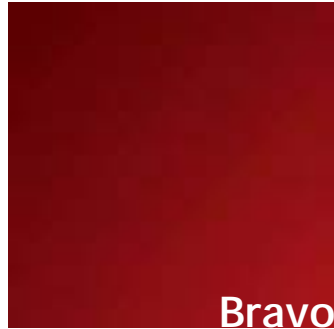


24-month warranty with unlimited mileage. Roadside assistance all over Europe. Depannage in the event of a breakdown or an accident. Towing to nearest Fiat dealership. Return home or continuation of your trip. Overnight stay in hotel. Replacement vehicle. Recovery of repaired vehicle. Parts shipped abroad.

Trim levels and options may vary in response to specific legal or market requirements. The information in this publication is purely indicative. Fiat reserves the right to make any changes to the models described in this publication at any time for technical or market reasons. □ Fiat Marketing 04.2.4090.08 S - 01/2007 - Printed in Italy - Arbe Industrie grafiche - Modena - Publication printed on chlorine-free paper.

Bravo





Bravo [*bra-vo*] adj.

A word used the world over
to express an achievement
that exceeds all expectations.





Beautiful [*beau-ti-ful*] **adj.**
Quality of people and things
endowed with beauty, that inspire
admiration and aesthetic emotion.



PURE HARMONY OF SHAPE ENVELOPING A DYNAMIC SPORTY HEART. A NEW IDEA OF BEAUTY.





FOR A SEDUCTIVE NATURE THAT WILL CAPTIVATE YOU AT FIRST GLANCE. INNER BEAUTY IS A RARE QUALITY. ONLY THOSE WHO HAVE BEAUTY AND REFINEMENT AT HEART CAN OFFER WARMTH, PLEASURE, SOFTNESS.



GIVE IN TO THE ALLURE OF DETAILS. IT'S THE SMALL THINGS THAT MAKE BEAUTY EVEN GREATER.







Powerful [*pow-er-ful*] **adj.**
Quality of people
and things possessing
great strength and vigour.



THE OTHER SIDE OF BEAUTY: AGGRESSIVE, BRAZEN, REBELLIOUS, BECAUSE INNER POWER IS THE FORCE THAT DRIVES EVERYTHING.





Safe [*sa-fe*] **adj.**
Quality of people and things
that are extremely safe, risk
and hazard free.



ONLY THOSE WHO ARE SELF-ASSURED CAN PROTECT THEMSELVES AND THEIR TRAVEL MATES.





Intelligent [*in-tel-li-gent*] adj.
Having the capacity
to understand, think, judge,
and cope with the unexpected.



THE TECHNOLOGICAL EVOLUTION OF THE CONCEPT OF TRAVELLING: WIPING OUT ANY DISTANCE WITH A SIMPLE GESTURE OR A WORD.





LINEACCESSORI STEERING WHEEL



LINEACCESSORI CUSTOMISATION





CIAOFIAT 800342800
N° VERDE

CIAO FIAT is the after-sales and customer relations service that can be reached with a single free phone number - 00800 3428 0000. The number can be called from most countries in Europe, and is easy to remember: it actually corresponds to the letters of the word 'FIAT' on the keypad of your telephone (00800-FIAT 0000 becomes 00800-3428 0000). CIAO FIAT provides you with roadside assistance and information services - everything you need to know about our models (versions, options, promotions, prices), about our services and about the FIAT dealer network, and you can book a test drive - and to answer all your needs or questions about using your FIAT car. The service is active from 8.00 a.m. to 8.00 p.m. from Monday to Friday, and on Saturday from 8.00 a.m. to 1.00 p.m. for information and customer services, and is active 24 hours a day, 7 days a week, for roadside assistance services.

The call is free both from land lines and from mobile networks. In some European countries, local operator network charges may apply.

www.fiat.com



24-month warranty with unlimited mileage. Roadside assistance all over Europe. Depannage in the event of a breakdown or an accident. Towing to nearest Fiat dealership. Return home or continuation of your trip. Overnight stay in hotel. Replacement vehicle. Recovery of repaired vehicle. Parts shipped abroad.

Trim levels and options may vary in response to specific legal or market requirements. The information in this publication is purely indicative. Fiat reserves the right to make any changes to the models described in this publication at any time for technical or market reasons.
Fiat Marketing 02.2.4091.08 - S - 01/2007 - Printed in Italy - Arbe industrie grafiche - Modena
Publication printed on chlorine-free paper.

Bravo





A perfect balance between Beauty and Substance, this is what the Bravo is all about.

Style and concreteness, the idea and its implementation, form and content: Bravo is a harmonious blend of elements that give life to a car possessing classical beauty and anticipating the future.

Attention to details and lines styled according to the best tradition of Italian design envelop a sporty heart, made of performance, technology, dynamism, safety.

A concrete beauty inside and out: flowing lines, a stylish interior, a wealth of valuable accessories, full protection for the occupants.

Follow your fancy and your taste, your ideal of beauty.

Bravo will take you to your destination.

WHEN POWER
MEANS HARMONY.

Stylish with character. Under the pleasing, flowing lines of the Bravo, beats a daring heart: its engines.

Two turbodiesel versions, the 1.9 16v Multijets with outputs of 120 and 150 bhp.

Three petrol engines: the 90 bhp 1.4 16v, and the 1.4 16v turbo, from the new T-Jet family, in two versions delivering 120 and 150 bhp, soon to become available.

What does it all add up to? Great performances, great fuel economy, unprecedented reliability, friendliness to the environment.

And gearboxes embodying avant-garde technology.

The dual-cone synchroniser and a new pre-synchronisation system ensure appreciably reduced gear engagement efforts, greater smoothness and the ability to transmit high torque values.

Together with the new engines, 5- or 6-speed gearboxes ensure superior ease of handling and silent operation, resulting in enhanced riding comfort. In short: a perfect mechanism, where technology is taken to new heights of beauty and efficiency without sacrificing power.

1.4 16v 90 BHP PETROL BRAVO - ACTIVE - DYNAMIC	1.9 120 BHP MULTIJET DIESEL ACTIVE - DYNAMIC - EMOTION	1.9 16v 150 BHP MULTIJET DIESEL DYNAMIC - EMOTION - SPORT
Displacement: 1368 cc Ecology level: Euro 4 Max power output-EC: 66 kW (90 bhp) at 5500 rpm Peak torque-EC: 128 Nm (13 kgm) at 4500 rpm Top speed: 179 km/h Acceleration 0 to 100 km/h: 12.5 seconds Fuel consumption-1999/100 EC directive (lit./100 km): urban cycle 8.7 - extra-urban cycle 5.6 - mixed cycle 6.7 CO ₂ emissions: 158 g/km	Displacement: 1910 cc Ecology level: Euro 4 Max power output-EC: 88 kW (120 bhp) at 4000 rpm Peak torque-EC: 255 Nm (26 kgm) at 2000 rpm Top speed: 194 km/h Acceleration 0 to 100 km/h: 10.5 seconds Fuel consumption-1999/100 EC directive (lit./100 km): urban cycle 6.9 - extra-urban cycle 4.3 - mixed cycle 5.3 CO ₂ emissions: 139 g/km	Displacement: 1910 cc Ecology level: Euro 4 Max power output-EC: 110 kW (150 bhp) at 4000 rpm Peak torque-EC: 305 Nm (31 kgm) at 2000 rpm Top speed: 209 km/h Acceleration 0 to 100 km/h: 9.0 seconds Fuel consumption-1999/100 EC directive (lit./100 km): urban cycle 7.6 - extra-urban cycle 4.5 - mixed cycle 5.6 CO ₂ emissions: 149 g/km



GOOD-LOOKING AND SELF-CONFIDENT. EXTREMELY SO.

The Bravo is at the forefront in terms of active and passive safety, introducing a new model of all-round protection, fine-tuned during thousands of hours of engineering studies, tests and simulations.

Intelligent protection that relies on the Smart Airbag 2 system, featuring automatically adapted firing parameters, a knee bag on the driver side, head protection window bags and side-bags housed in the seatbacks for the protection of the chest and hip area.

That's not all: three-point belts with pretensioners and load limiters, five headrests and FPS (Fire Prevention System).

The Bravo uses a leading-edge braking system with ABS and ESP.

The ABS is complete with EBD (Electronic Brake Force Distribution).

The ESP (Electronic Stability Program) monitors vehicle stability continually and keeps the vehicle under control in sudden swerves.

The ESP is mated to other safety devices, including the Hill Holder, to facilitate uphill starting, the HBA, for improved braking performance in an emergency, and the ASR/MSR antiskid system.

In short: best-in-class all-round safety.



MODERN AND INTELLIGENT.

The Bravo ushers in the future.

Its innovative equipment enables you to keep in touch with the world and takes your journey to new heights of comfort.

With Blue&Me™ you can use a Bluetooth™ cell phone and any reader of digital audio files in MP3, WAV and WMA formats by means of voice controls, without taking your hands off the steering wheel.

Moreover, you can listen to the music you like best, selecting the songs stored in your MP3 player from the on-board panel.

To ensure you stick to your course, the new Blue&Me™ Nav provides a user-friendly, easy to use satellite navigation system by pictograms, which lets you select a destination through voice and steering-wheel mounted controls. As an alternative, you can have a traditional Connect Nav+ navigator with road maps.

Additional comfort-making features include the dual-zone climate control, choice of HI-FI and HI-FI Soundsystem, the Cruise Control, parking, rain and twilight sensors. The Bravo is at your commands.



BEAUTY IN THE DETAILS.

Every time you get into a Bravo you find a host of details reflecting the idea of 'real beauty' that inspired the design of this car model, in terms of functionality, elegance, intelligence. An environment that is warm and comfortable, and at the same time solid, safe, functioning. Choose the trim level you prefer, from Bravo, Active, Dynamic, Emotion and Sport. Five different ways, all of them distinctive, to feel Bravo.





- 1. OPT 431 14-spoke 16" alloy wheels
- 2. OPT 439 20-spoke 16" alloy wheels*
- 3. OPT 433 13-spoke 17" alloy wheels of elegant design
- 4. OPT 432 15-spoke 17" alloy wheels of sporty design
- 5. OPT 435 18" alloy wheels of sporty design
- 6. Lineaccessori - 10-spoke 17" light alloy wheels
- 7. Lineaccessori - 14-spoke 17" alloy wheels

* Also available in Lineaccessori

WHY GO UNNOTICED?

Add character to character.

To make your Bravo truly yours, you can choose from a wealth of standard and optional features, such as 16" , 17" or 18" alloy wheels, to kindle your elegant or sporty heart. Have your pick.





INNER BEAUTY.

Bravo is a welcoming, comfortable environment expressing your style. It can be perceived in the stylish interior materials, which enhance the aesthetic pleasure afforded by each different version of the Bravo.

Top-notch Italian design, first-rate materials, attention to the smallest details: everything has been conceived to make a ride aboard the Bravo into a unique experience, where pleasure goes hand in hand with functionality and ergonomics.



HARMONY
OF COLOURS.

Shapes are delimited by lines, but are filled
with colours. The colour combinations
adopted for the Bravo correspond
to an ideal of beauty made of harmony
and liveliness, dynamism and elegance.

		BRAVO	ACTIVE	DYNAMIC			EMOTION		SPORT				DYNAMIC EMOTION		
		Fabric	Fabric	Fabric	Fabric	Fabric	Fabric	Fabric	Fabric	Fabric	Black Leather	Black Leather	Black Leather	Marmotta Leather	
		121 Axel Coal Grey	121 Axel Coal Grey	191 Inox Coal Grey	177 Inox Marmotta	365 OPT 727 Red Sail	336 Tecnotweed Coal Grey	348 Tecnotweed Marmotta	365 Sail Red	367 Sail Blue	474 OPT 211 Red Stitching	475 OPT 211 Blue Stitching	485 OPT 211 Coal Grey Embroidery	486 OPT 211 Marmotta Embroidery	
PASTEL COLOURS															
187	Tango Red	■	■	■		■	■		■		■		■		■
296	Glory White	■	■		■			■					■		■
METALLIC COLOURS (OPTION 210)															
272	Spiritual Ivory	■	■		■			■					■		■
284	Techno Grey	■	■	■		■	■		■	■	■	■	■		
336	Minuet Azure	■	■	■			■								
865	Epic Grey				■			■					■		■
890	Symphony Blue	■	■	■			■						■		
PEARLESCENT COLOURS (OPTION 270)															
620	Digital Grey	■	■	■		■	■		■	■	■	■	■		
891	Crossover Black	■	■	■	■	■	■	■	■	■	■	■	■		■
MICALISED COLOURS (OPTION 4H5)															
487	Cool Jazz Blue	■	■	■	■		■						■		
MICALISED COLOURS (OPTION 4SA)															
106	Maranello Red					■			■		■				
899	Maserati Blue									■		■			

ESSENTIAL ACCESSORIES.

Do not overlook the countless opportunities for personalisation offered by Lineaccessori to enhance your experience with the Bravo?

Sportiness: rear spoiler, sporty side skirts, chromed exhaust tip, pedal covers and kickplate in aluminium. Personal solutions: leather trimmed gearlever knob and steering-wheel with car radio controls, Bluetooth™ hands-free system, provision for iPod+USB, DVD player on ceiling. Leisure time: roof bars, bike rack, ski carrier, surfboard carrier, pull-out tow hook, side mouldings. On-board organisation: separator and luggage retaining nets. Safety: parking sensor, satellite alarm, Isofix child seat (up to 18 kg), Kiddy Life seat (from 9 to 36 kg).

Lineaccessori, do not settle for anything less.



TECHNICAL SPECIFICATIONS.

	1.4 16V 90 bhp	1.9 Multijet 120 bhp	1.9 Multijet 16V 150 bhp
ENGINE	BRAVO - ACTIVE - DYNAMIC	ACTIVE - DYNAMIC EMOTION	DYNAMIC - EMOTION SPORT
No. of cylinders, arrangement	4, in line, transversely mounted at front	4, in line, transversely mounted at front	4, in line, transversely mounted at front
Bore x stroke (mm)	72.0 x 84.0	82.0 x 90.4	82.0 x 90.4
Displacement (cc)	1368	1910	1910
Compression ratio	11.0:1	18.0:1	17.5:1
Max. power output: kW-EC (bhp-EC) at rpm	66 (90) 5500	88 (120) 4000	110 (150) 4000
Peak torque: Nm-EC (kgm-EC) at rpm	128 (13) 4500	255 (26) 2000	305 (31) 2000
Ecology level	Euro 4	Euro 4	Euro 4
Emission control	three-way catalyst in engine compartment, 2 heated Lambda probes, EOBD	two oxidising catalysts (in engine compartment and under body), electrical EGR valve, EOBD	two oxidising catalysts (in engine compartment and under body), electrical EGR valve, EOBD
Timing system (control)	2 OHC's (toothed belt) hydraulic tappets	1 OHC (toothed belt)	2 OHC's (toothed belt) hydraulic tappets
Fuel feed	timed, sequential electronic MPI, returnless system	'Common Rail' Multijet direct injection with variable geometry supercharger and intercooler	'Common Rail' Multijet direct injection with variable geometry supercharger and intercooler
TRANSMISSION			
Drive	front	front	front
Gearbox, no. of speeds	6 + reverse	5 + reverse	6 + reverse
ELECTRICAL SYSTEM			
Battery capacity (Ah)	50	60	60
STEERING SYSTEM			
Type	electric Dualdrive™ power steering	electric Dualdrive™ power steering	electric Dualdrive™ power steering
Steering diameter (m): 16"/17" tyres	10.4	10.4	10.4 (11*)
BRAKES - D (disk) with ABS + EBD	+ ESP (Dynamic)	+ ESP (Dynamic, Emotion)	+ ESP
Front: Ø mm	D 257 x 22 (self-ventilating)	D 284 x 22 (self-ventilating)	D 281 x 26 (self-ventilating)
Rear: Ø mm	D 251 x 10	D 251 x 10	D 251 x 10
SUSPENSION SYSTEM			
Front	independent wheel McPherson set-up, telescopic double-acting shock absorbers, stabiliser bar with ball joint rods		
Rear	interconnected wheels with torsion beam, telescopic shock absorbers, roll bar		
WHEELS			
Tyres	195/65 R 15 91H 205/55 R 16 91H 225/45 R 17 91V	195/65 R 15 91H 205/55 R 16 91H 225/45 R 17 91V	205/55 R 16 91V 225/45 R 17 91V 225/40 R 18 92V REINFORCED
DIMENSIONS			
Wheelbase (mm)	2600	2600	2600
Track▲ front / rear (mm)	1538/1532	1538/1532	1538/1532 1530/1524 (with 18" tyres)
Length / Width (mm)	4336/1792	4336/1792	4336/1792
Height, unladen (mm)	1498	1498	1498
Luggage space VDA (dm³): standard with Fix & Go	400	400	400
with rear seat folded and Cargo Box	1175	1175	1175
TANK CAPACITY – WEIGHTS			
Fuel tank (litres)	58	58	58
Kerb weight DIN (kg)	1205	1320	1360
Max towable weight (kg)	1000	1300	1300
PERFORMANCE - FUEL CONSUMPTION			
Top speed (km/h)	179	194	209
Acceleration (sec.): 0 to 100 km/h (2 occupants + 20 kg)	12.5	10.5	9.0
Fuel consumption* (l/100 km): urban cycle extra-urban cycle mixed cycle	8.7 5.6 6.7	6.9 4.3 5.3	7.6 4.5 5.6
CO ₂ emissions (g/km)	158	139	149

▲ unladen ▼ 1999/100 EC directive * with 18" tyres

MAIN STANDARD EQUIPMENT AND OPTIONS.

	BRAVO	ACTIVE	DYNAMIC	EMOTION	SPORT
LINE AND STYLING					
Body coloured bumper	■	■	■	■	■
Body-coloured door handles	-	-	■	-	■
Chromed exterior handles	-	-	-	■	-
Electric wing mirrors with demisting function and exterior temperature sensor	■	■	■	■	■
Body-coloured wing mirrors	-	-	■	■	■
Chrome inserts along waist line	-	-	-	■	■
Metallic paint	210 ○	○	○	○	○
Pearlescent paint	270 ○	○	○	○	○
Micalised paint	4H5/4SA ○	○	○	○	○
15" alloy wheels with 195/65 tyres	■	○	-	-	-
16" alloy wheels with 205/55 tyres	-	■	-	-	-
20-spoke 16" alloy wheels with 205/55 tyres	439 -	○	■	○	○
14-spoke 16" alloy wheels with 205/55 tyres	431 -	○	○	-	-
15-spoke 17" alloy wheels, sporting design with 225/45 tyres (not suitable for snow chains)	432 -	-	-	-	■
13-spoke 17" alloy wheels, elegant design with 225/45 tyres (not suitable for snow chains)	433 -	-	○	■	-
18" alloy wheels, sporting design with 225/40 tyres (not suitable for snow chains)	435 -	-	-	-/○♦	○
Dark tinted windows	070 -	-	-	○	○
Sport customisation: Spoiler, Sideskirts, Sporting trim, Painted brakes calipers, Chromed exhaust pipe tip, Sports styled graphics of Instruments and pedals, Carpet covers					■
Leather upholstery	211 -	-	○	○	○
Leather steering wheel, gear knob and hand-brake lever and sporting design	321 -	-	-	-	■
Leather steering wheel and gear knob	320 -	○	■	■	-
'Metallic black' interior door handles	-	-	-	-	■
Chromed interior door handles	-	-	■	■	■
Air nozzles with chromed rings and door armrest with chromed inserts	■	■	■	■	■
Instrument panel with chromed rings	-	-	■	■	■
Interior door handles with chromed frame	-	-	-	■	■
Fascia panel with brushed finish	■	■	-	-	-
Fascia panel with carbon-like finish	-	-	■	■	■
16" light alloy wheels	△	△	△	△	△
17" light alloy wheels with 10-spoke and 14-spoke	△	△	△	△	△
Spoiler on tailgate	△	△	△	△	-
Sports sideskirts	△	△	△	△	-
Chromed exhaust pipe tip	△	△	△	△	-
Pedal covers and aluminium footrest	△	△	△	△	-
Aluminium kick plates	△	△	△	△	△
Moquette and rubber mats	△	△	△	△	△
Steering wheel with radio controls (6 buttons) and leather gear knob	△	△	△	△	△
COMFORT / FUNCTIONALITY					
Fiat CODE (electronic antitheft)	■	■	■	■	■
Power windows at front with automated and anti-pinching functions	■	■	■	■	■
Remote door opening/locking	■	■	■	■	■
Power windows at rear with finger protection system	023 -	-	○	■	○
Antitheft (volumetric, antilifting) with alarm	213 -	○	○	○	○
Folding wing mirrors	441 -	-	○	○	○
Electrically opened tailgate with 'logo push' system	■	■	■	■	■
Front ceiling light with spotlight and rear light fixture	■	■	■	■	■
Light with 'Night Design' effect on handles and ceiling light	-	-	-	■	■
Sun visors with mirror	-	-	■	■	■
Lit mirror in passenger side sunvisor	-	-	-	■	■
12-volt power socket in loading compartment	4HG ○	○	○	○	○
Instrument panel with Trip computer and My Car system	■	■	■	■	■
Central unit with glass holder	■	■	■	■	■
Front armrest with chilled storage compartment	132/465 -	-	○	■	■
Driver's seat with height adjustment	■	■	■	■	■
Passenger seat with height adjustment	454 -	-	■	○	○
Heated front seats	452 -	-	○	○	○
Compartment under front passenger seat	-	-	-	■	-
Driver's seat with manual lumbar adjustment	40Y ○	○	○	■	■
Wrap-around front seats and sporting trim	-	-	-	-	■
Rear seat armrest	275 -	-	-	○	■
Front seats with electric adjustment and heating system	134 -	-	-	○	-
60 / 40 split (3 str.) rear seat	■	■	■	■	■
Height-adjustable head restraints front and rear	■	■	■	■	■

♦ 1.9 Multijet 150 bhp

	BRAVO	ACTIVE	DYNAMIC	EMOTION	SPORT
COMFORT / FUNCTIONALITY					
Third rear head restraint with height adjustment	-	-	■	■	■
Single-zone manual climate control system	-	■	■	-	■
Dual-zone automatic climate control system (with dual temperature selection)	140 -	-	○	■	○
Rear air nozzles and pollen filter	-	■	■	■	■
Dualdrive™ power steering	■	■	■	■	■
Cruise control	416 -	-	○	○	○
Parking sensor at rear	52B -	○	○	■	○
Tyre inflation sensor	365 -	-	○	○	○
Dusk sensor + rain sensor	41D -	-	○	○	○
Gas headlamps	230 -	-	○	○	○
DPF (particulate filter for diesel engines)	733 -	○	○	○	○
Skydome: electrical opening sunroof with large glazed surface	400 -	-	○	○	○
Tyre repair multipurpose kit (Fix & Go)	■	■	■	■	■
15" full size spare wheel	980 ○	-	-	-	-
16" full size spare wheel	886 -	○	○	-	-
Electrical (PTC) unit heater for diesel versions	52Y -	-	○	○	○
SPORT PACK: (923+926+4MQ+4CS+40Y+321+727+432) Spoiler, Skirts, Chromed waist line, Special pedal set, Driver's seat with lumbar adjustment, Leather steering wheel, Gear knob and Hand-brake lever, Sporting interior, 17" alloy wheels with 225/45 tyres	4TE -	-	-/○▼	-	-
Roof rack	△	△	△	△	△
Cycle carrier / ski carrier / surfboard carrier	△	△	△	△	△
Cargo retaining nets / partition net for luggage compartment	△	△	△	△	△
Luggage compartment protective tray	△	△	△	△	△
Pull-out towing hook	△	△	△	△	-
Side mouldings and bumpers protection	△	△	△	△	-
SAFETY					
ABS + EBD (Electronic Brake Distribution)	■	■	■	■	■
Front airbags (driver's airbag with Smart Dual Stage system)	■	■	■	■	■
Side bags at front	■	■	■	■	■
Window bags	614 ○	○	■	■	■
Driver kneebag	150 ○	○	○	○	○
Anti-whiplash head restraint	42F -	-	○	○	○
Safety belts with pretensioners at rear	4A1 -	-	-	○	○
My Car passenger airbag deactivation system	■	■	■	■	■
Front seat belts with pretensioner, load limiter and buckle sensor	■	■	■	■	■
3-point Isofix attachments (two on rear seat)	■	■	■	■	■
ESP (Electronic Stability Program) + ASR/MSR, HBA and Hill Holder	392 ○	○	■	■	■
Fog lights with 'Cornering' self-adaptive function	097 -	○	■	■	■
Antitheft bolts for alloy wheels	△	△	△	△	△
Parking sensor in rear bumper	△	△	△	-	△
Satellite alarm	△	△	△	△	△
Clearbox	△	△	△	△	△
Children's cradle (up to 10 kg)	△	△	△	△	△
Kiddy Life seat (9 to 36 kg)	△	△	△	△	△
Isofix baby seat (up to 18 kg)	△	△	△	△	△
AUDIO / TELEMATICS					
Provision to fit car radio with 4 speakers, 2 tweeters + aerial	■	■	-	-	-
Car radio with CD player, 40W Hi-Fi sound system, 4 speakers + 2 tweeters	564 -	○	■	■	-
Car radio with CD + MP3 player, 40W Hi-Fi sound system, 4 speakers + 2 tweeters	41A -	○	○	○	■
Hi-Fi sound system with 5-channel power amplifier, with 260W Bass-reflex type amplified subwoofer, 4 speakers + 4 tweeters	4JF -	-	○	○	■
6-key radio controls on steering wheel	245 -	○	■	■	-
Blue&Me™ and Blue&Me Nav™ steering wheel mounted controls	5BH -	-	○	○	■
Blue&Me™: Bluetooth™ technology hands-free system with steering wheel mounted controls, Instrument panel with multifunctional display, MP3-player with USB port and SMS reader	4J3 -	-	○	○	■
Blue&Me Nav™: Blue&Me™ system + on board navigator with pictograms and maps uploaded from pen drive and voice controlled destination selection	55Y 709 -	-	○	○	○
Radio/telephone controls on steering wheel	709 -	-	○	○	○
Connect Nav+ satellite navigator and CD with Italian road maps	904/530 -	-	○	○	○
Installation provision for CD-changer	577 -	-	○	○	○
Bluetooth™ hands-free system	△	△	△	△	-
Installation provision for iPod +USB	△	△	△	△	-
DVD player on ceiling	△	△	△	△	△

▼ 1.9 Multijet 120 bhp ■ = standard ○ = option - = not available △ = Lineaccessori

