

SD Memory Card
Formatting Software

Instruction Manual

May 21, 2007

Matsushita Electric Industrial Co., Ltd.

Table of Contents

1. Introduction	1
2. System Requirements	1
3. Installation	1
4. Uninstallation	1
5. Operation Guide	3
5.1 Window Description	3
5.1.1 Main Window	3
5.1.2 Format Option Window	5
5.2 Startup Operation	6
5.3 Format Operation	7
5.4 Option Select Operation	9
5.5 Refresh Operation	11
5.6 Cancel Operation	12
5.7 Notes	13
5.8 Copyright	13

1. Introduction

This software formats SD Memory Cards and SDHC Memory Cards using a formatting program that complies with the SD Memory Card Specification. SD formatting provides quick and easy access to the SD Memory Card and SDHC Memory Card.

Note: SD Memory Cards and SDHC Memory Cards are generically called "SD/SDHC Memory Card" in this document.

Generally, SD/SDHC Memory Card file systems formatted with generic operating system formatting software do not comply with the SD Memory Card Specification.

If you have formatted SD/SDHC Memory Card with generic operating system formatting software, reformat SD/SDHC Memory Card using this software or the appropriate formatting software prepared by the SD hosts provider.

2. System Requirements

- OS: Windows 2000, Windows XP, Windows Vista
- Interface: USB reader/writer, PC card adapter, or SD slot that can read and write SD/SDHC Memory Card

Note: Some reader/writers cannot use this software.

In case of formatting of SDHC Memory Card, the reader/writer supporting SDHC Memory Card is needed.

3. Installation

- (1) Close all program applications.
- (2) Execute the installer file. Install the SD Memory Card Formatting Software following the instructions of the installation window.

Note: If you have already installed this software, it will be uninstalled once automatically while you execute operation (2). In this case, install again from the operation (2) after completing the uninstallation.

If "User Account Control" window is displayed on the screen, please click on [Arrow].

4. Uninstallation

[Windows Vista]

- (1) Click on [Start] and click on [Control Panel].
- (2) Click on [Uninstall a program].
- (3) Double click on [SDFormatter].
- (4) If "User Account Control" window is displayed on the screen, please click on [Continue].
- (5) Uninstall the SD Memory Card Formatting Software following the instructions of the uninstallation window.

[Windows XP]

-
-
- (1) Click on [Start], point to [Settings], and click on [Control Panel].
If you cannot find [Settings] and/or [Control Panel] from [Start] menu, click on [Start], and then click on [My Computer]. Click on [Change a setting] or [Control Panel] that exists on the left side of my computer window.
 - (2) Click on [Add or Remove Programs].
 - (3) Select “SDFormatter” and click on [Change/Remove].
 - (4) Uninstall the SD Memory Card Formatting Software following the instructions of the uninstallation window.

[Windows 2000]

- (1) Click on [Start], point to [Settings], and click on [Control Panel].
- (2) Click on [Add/Remove Programs].
- (3) Select “SDFormatter” and click on [Change/Remove].
- (4) Uninstall the SD Memory Card Formatting Software following the instructions of the uninstallation window.

5. Operation Guide

5.1 Window Description

5.1.1 Main Window

After the SD Memory Card Formatting Software is started up, the following main window is displayed on the screen. SD formatting is executed by click on the format button of this window.

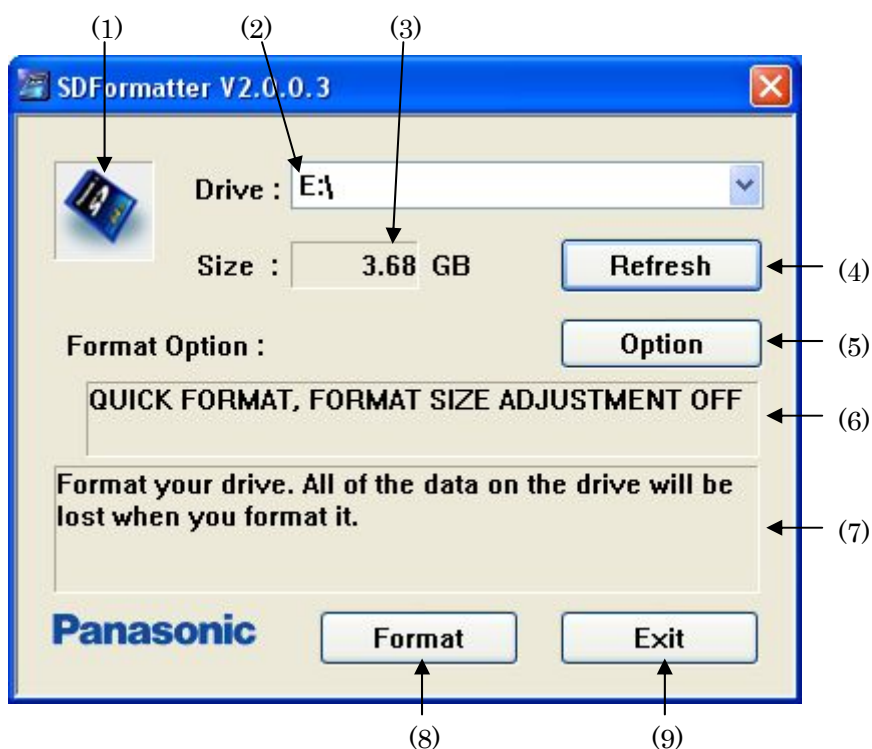


Figure1: Main Window

(1) Status

This field indicates the status of the SD/SDHC Memory Card and its reader/writer.

Blue : They are normal.

Red : At least, one of them is disabled.

Gray : They are disabled. This might indicate that no SD/SDHC Memory Card was recognized by this software.

(2) Drive

This list indicates SD/SDHC Memory Card drives. This list is used for the selection of the target drive.

(3) Size

This field indicates the capacity of SD/SDHC Memory Card.

(4) Refresh button

This button is used to update the information about the SD/SDHC Memory Card drives. When this button is clicked, this software gets the latest information about the

SD/SDHC Memory Card drives. This button may be used after new SD/SDHC Memory Card is inserted in any reader/writer.

(5) Option button

This button is used to select some options of format operation. When this button is clicked, the format option window is displayed on the screen. This window is used for selection of some options. For details about the format option window, see the following section.

(6) Format Option Indication

This area indicates the current format option.

(7) Message Area

This area indicates some instructions for users.

(8) Format button

This button is used to execute the format operation.

(9) Exit button

This button is used to terminate this software.

5.1.2 Format Option Window

When option button is clicked, the following format option window is displayed on the screen. By using this window, some options of format operation can be selected.

* "QUICK" is selected for the default of Format Type option.

* "OFF" is selected for the default of Format Size Adjustment.

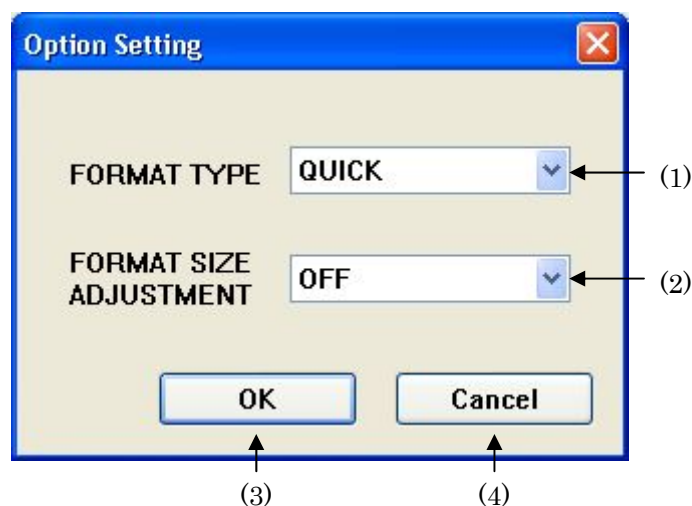


Figure2: Format Option Window

(1) Format Type

This list is used to select user data deletion option.

QUICK:

This software executes the quick format. In this case, this software initializes file system metadata only.

FULL (Erase OFF):

This software executes the full format. In this case, this software initializes file system metadata and completely deletes all user data recorded in the SD/SDHC Memory Card. The deletion is executed by writing initial data to whole area of the card. Therefore, it may take long time to format.

FULL (Erase ON):

This software executes the full format. In this case, this software initializes file system metadata and completely deletes all user data recorded in the SD/SDHC Memory Card. The deletion is executed by writing initial data to whole area of the card. Moreover, "erase operation" is executed for whole area of the card if possible. Therefore, it may take long time to format.

* Some reader/writers don't support "erase operation". If "FULL (Erase ON)" is selected with these reader/writers, "erase operation" isn't executed. In this case, "FULL (Erase ON)" and "FULL (Erase OFF)" become the same meaning.

(2) Format Size Adjustment

If the formatted capacity of the SD/SDHC Memory Card is not the multiple size of specific unit size, called "cylinder", some hosts cannot access it successfully. This function adjusts format size to multiple size of cylinder. By reformatting using this function, some hosts may become possible to access it successfully.

OFF:

This software doesn't adjust the format size. Usually, this option should be selected.

ON:

This software adjusts the format size to the multiple size of cylinder. In this case, the formatted capacity may become smaller than before.

* This function is supported for the specific users who encountered some troubles depending on the formatted size. If you don't have any troubles about it, you don't need to use this function.

(3) OK button

This button is used to reflect the selected option. When this button is clicked, this software reflects the selected option and deletes this window.

(4) Cancel button

This button is used to cancel the option selection. When this button is clicked, this software cancels the option selection and deletes this window.

5.2 Startup Operation

(1) Close all program applications.

(2) Insert SD/SDHC Memory Card into reader/writer.

(3) Click on [Start], point to [All Programs] -> [Panasonic] -> [SD Formatter VX.X], and click on [SD Formatter VX.X].

* "X.X" means the version number of SD Memory Card Formatting Software.

* If "User Account Control" window is displayed on the screen, please click on [Arrow].

(4) The main window is displayed on the screen.

5.3 Format Operation

- (1) Select the target drive by drive list and check SD/SDHC Memory Card size.
- (2) Click on [Format].

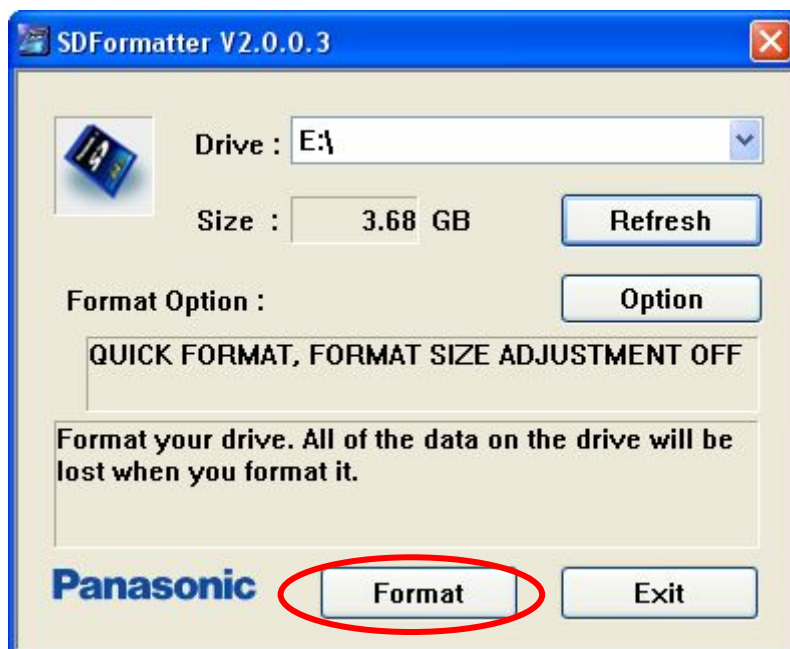


Figure3: Main Window

- (3) After clicking on it, confirmation window is displayed on the screen. Here, if [OK] is clicked, this software executes the format operation. On the contrary, if [Cancel] is clicked, this software cancels the format operation and returns to the main window.

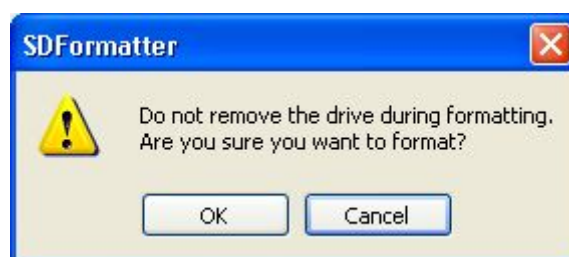


Figure4: Confirmation Window

(4) The following status window is displayed on the screen during the format operation.

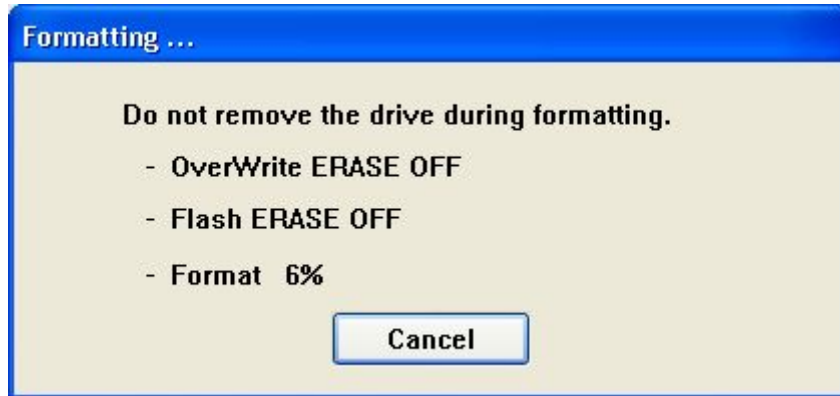


Figure5: Status Window

Note: [Cancel] on this window is available only if either "FULL (Erase ON)" or "FULL (Erase OFF)" is selected as format type option. If "QUICK" is selected as format type option, this button is not available.

(5) After the format operation completion, the following window is displayed on the screen. When [OK] is clicked, this software deletes this window and returns to the main window.

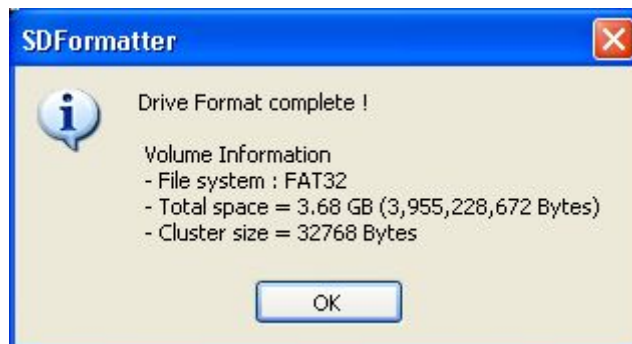


Figure6: Format Completion Window 1

Note: The following window may be displayed after the format operation completion. In this case, please remove and reinsert SD/SDHC Memory Card from your PC.



Figure7: Format Completion Window 2

5.4 Option Select Operation

(1) Click on [Option].

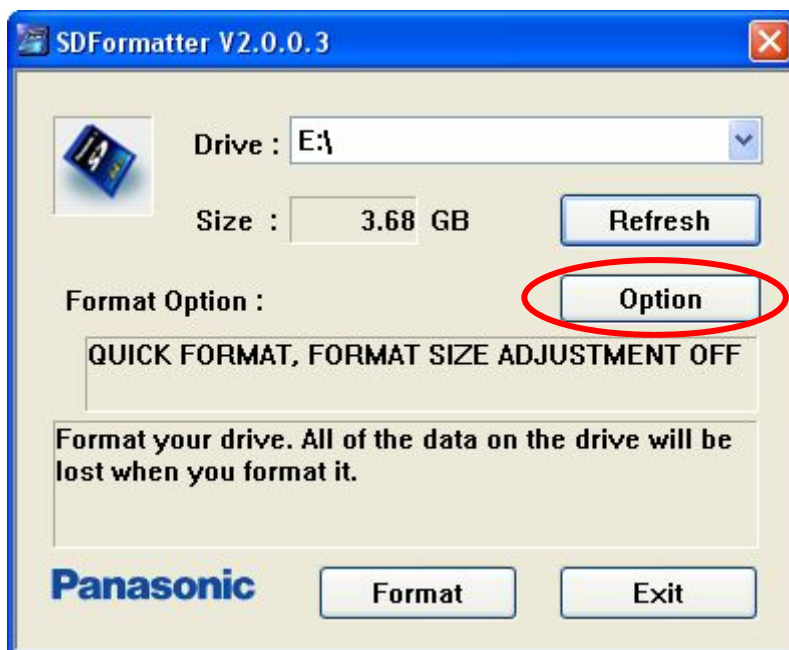


Figure8: Main Window (before option selection)

(2) After clicking on it, format option window is displayed on the screen. Here, select the format type option and format size adjustment option. After this selection, if [OK] is clicked, this software reflects the selected options and returns to the main window. On the contrary, if [Cancel] is clicked, this software cancels the option selection and returns to the main window.

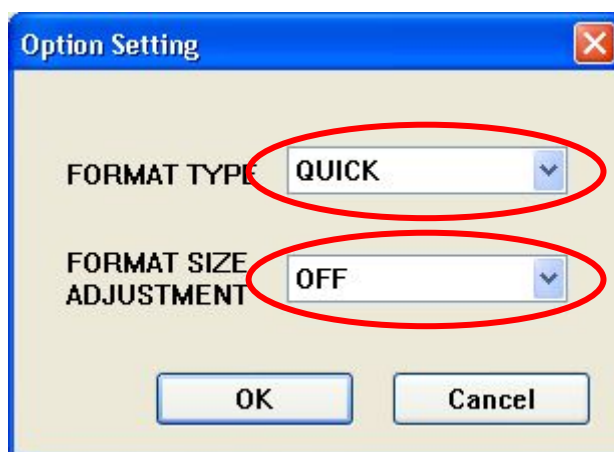


Figure9: Format Option Window (before option selection)

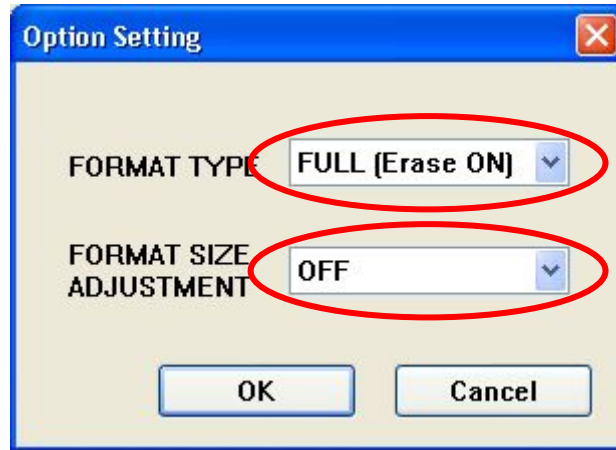


Figure10: Format Option Window (after option selection)

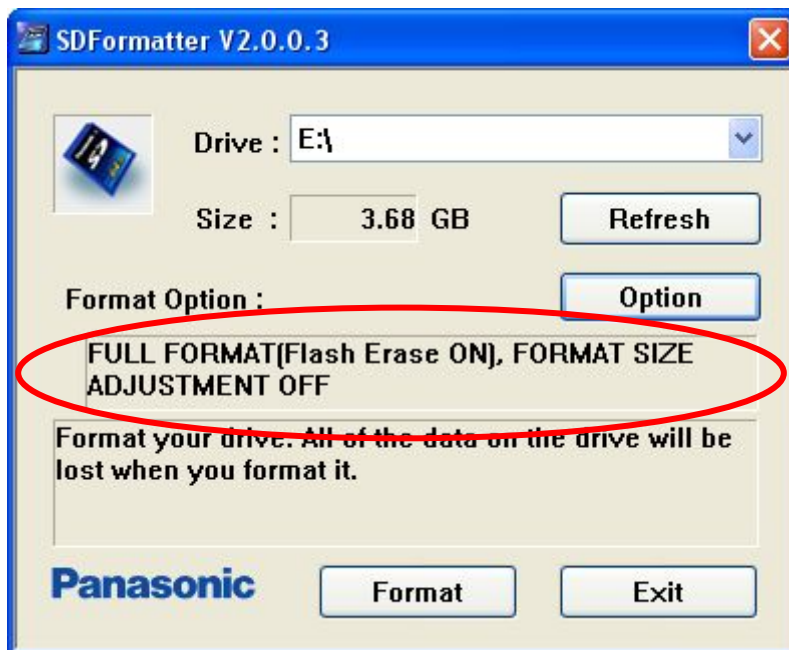


Figure11: Main Window (after option selection)

5.5 Refresh Operation

- (1) If no SD/SDHC Memory Card is inserted in any reader/writers, the status field on the main window indicates gray and both drive field and size field don't indicate any.

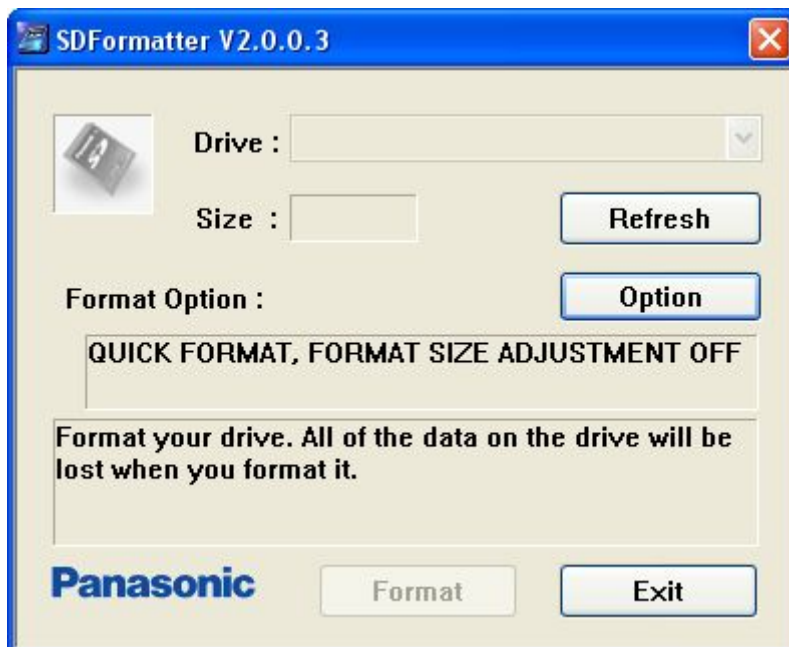


Figure12: Main Window (before refresh)

- (2) After inserting SD/SDHC Memory Card in some reader/writers, click [Refresh] on the main window. After click on it, this software gets the latest information about the SD/SDHC Memory Card drives and shows some information.

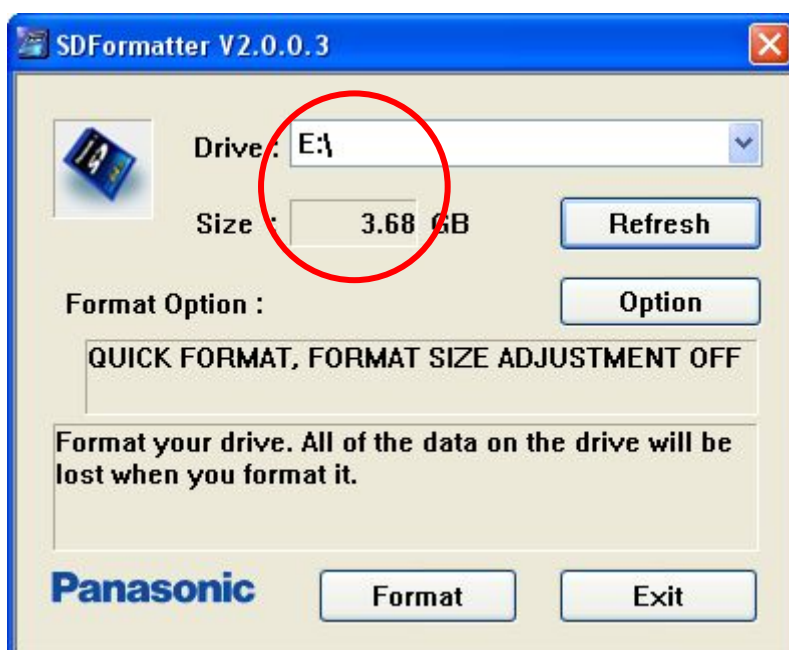


Figure13: Main Window (after refresh)

5.6 Cancel Operation

If either "FULL (Erase ON)" or "FULL (Erase OFF)" is selected as format type option, you can cancel the full format operation while formatting.

- (1) Click [Cancel] on the following status window during the format operation.

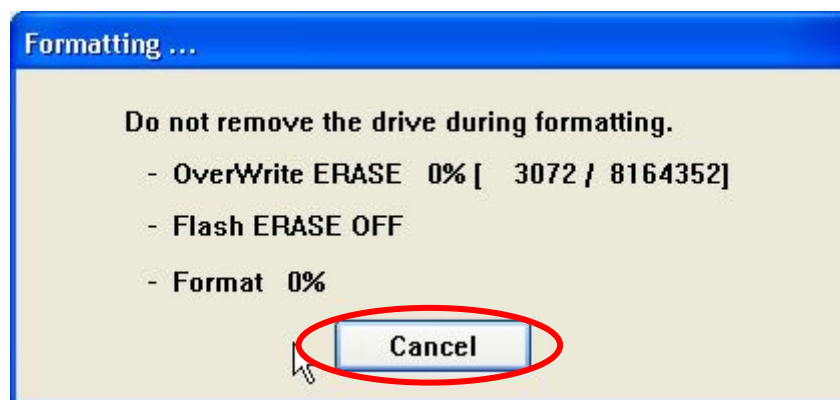


Figure14: Status Window (before cancel)

- (2) The both deletions of "writing initial data" and "erase operation" are canceled. And this software only initializes file system metadata.

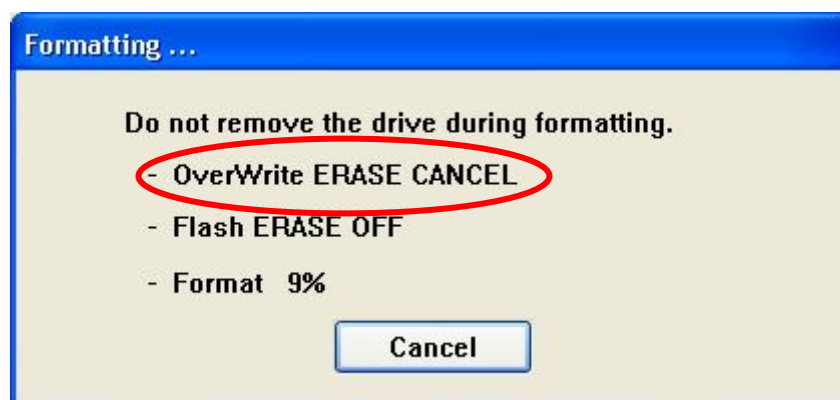


Figure15: Status Window (after cancel)

(3) After the format operation completion, the following window is displayed on the screen.



Figure16: Format Completion Window

Note: Cancellation affects only the user data deletion executed by the write operation or the erase operation. Therefore, the format operation is executed to the end independently of the cancellation. If the user data deletion is canceled, the user data is not deleted completely. In this case, the full format has to be executed again for complete deletion of user data.

5.7 Notes

- Do not format recordable media other than SD/SDHC Memory Cards using this software. If you have mistakenly formatted a recordable media other than the SD/SDHC Memory Card, reformat the media using the appropriate formatting software that came with the media.
- Do not remove the SD/SDHC Memory Card while formatting.
- Once formatting has started, all previously recorded data will be erased.
- Do not format the SD/SDHC Memory Card while the write protection switch is on.
- If the SD formatting software does not recognize the SD/SDHC Memory Card, re-insert the card and click on "Refresh".
- SD formatting is not possible on unrecognizable "removable drives".
- Cannot be used on a Macintosh system.
- This software does not cope with the copyright protection. If you use a card for some equipment with copyright protection such as SD Audio Player, the formatting must be done by the specific formatting software prepared by the equipment provider.
- In some cases SD/SDHC Memory Cards may not be recognized by the SD formatting software immediately after installation of SD/SDHC Memory Card compatible reader/writer driver software. If this occurs, re-start your computer and try again.
- If you are using a USB drive and the SD formatting software does not recognize the SD/SDHC Memory Card even after re-inserting it, remove the USB cable while the SD/SDHC Memory Card is still inserted in the drive and after about 10 seconds reconnect the USB cable and click on the "Refresh" button.
- Some reader/writers cannot use "erase operation".
- In case of formatting of SDHC Memory Card, the reader/writer supporting SDHC Memory Card is needed.

5.8 Copyright

Copyright (C) Matsushita Electric Industrial Co., Ltd. 2001-2007

Microsoft and Windows are either registered trademarks or trademarks of Microsoft Corporation in the United States and/or other countries.

Other mentioned product names and company names are trademarks or registered trademarks.